


Product datasheet

Anti-LRRC41 antibody ab92752

画像数 1

製品の概要

製品名	Anti-LRRC41 antibody
製品の詳細	Rabbit polyclonal to LRRC41
由来種	Rabbit
アプリケーション	適用あり: ELISA, WB
種交差性	交差種: Rat, Human 交差が予測される動物種: Mouse 
免疫原	Synthetic peptide corresponding to an internal region of Human LRRC41.
ポジティブ・コントロール	Cell extracts from Rat heart or kidney

製品の特性

製品の状態	Liquid
保存方法	Shipped at 4°C. Upon delivery aliquot and store at -20°C. Avoid repeated freeze / thaw cycles.
バッファー	Preservative: 0.02% Sodium Azide Constituents: 50% Glycerol, PBS (without Mg ²⁺ and Ca ²⁺), 150mM Sodium chloride, pH 7.4
精製度	Immunogen affinity purified
ポリ/モノ	ポリクローナル
アイソタイプ	IgG

アプリケーション

Our [Abpromise guarantee](#) covers the use of **ab92752** in the following tested applications.

The application notes include recommended starting dilutions; optimal dilutions/concentrations should be determined by the end user.

アプリケーション	Abreviews	特記事項
----------	-----------	------

ELISA

WB

追加情報

ELISA: 1/5000.

WB: 1/500 - 1/1000. Predicted molecular weight: 89 kDa.

Not yet tested in other applications.

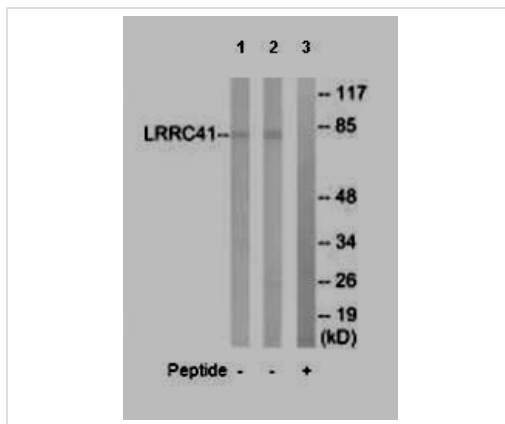
Optimal dilutions/concentrations should be determined by the end user.

ターゲット情報

関連性

LRRC41 is a probable substrate recognition component of an ECS (Elongin BC-CUL2/5-SOCS-box protein) E3 ubiquitin ligase complex which mediates the ubiquitination and subsequent proteasomal degradation of target proteins. There are two different isoforms.

画像



Western blot - Anti-LRRC41 antibody (ab92752)

All lanes : Anti-LRRC41 antibody (ab92752)
at 1/500 dilution

Lane 1 : Rat heart cell extract

Lane 2 : Rat kidney cell extract

Lane 3 : Rat heart cell extract with immunizing
peptide at 10 µg

Lysates/proteins at 20 µg per lane.

Predicted band size: 89 kDa

Please note: All products are "FOR RESEARCH USE ONLY AND ARE NOT INTENDED FOR DIAGNOSTIC OR THERAPEUTIC USE"

Our Abpromise to you: Quality guaranteed and expert technical support

- Replacement or refund for products not performing as stated on the datasheet
- Valid for 12 months from date of delivery
- Response to your inquiry within 24 hours
- We provide support in Chinese, English, French, German, Japanese and Spanish
- Extensive multi-media technical resources to help you
- We investigate all quality concerns to ensure our products perform to the highest standards

If the product does not perform as described on this datasheet, we will offer a refund or replacement. For full details of the Abpromise, please visit <https://www.abcam.co.jp/abpromise> or contact our technical team.

Terms and conditions

- Guarantee only valid for products bought direct from Abcam or one of our authorized distributors