

Product datasheet

Anti-Actin Regulatory Protein CAPG antibody ab89511

1 References [画像数 2](#)

製品の概要

製品名	Anti-Actin Regulatory Protein CAPG antibody
製品の詳細	Mouse monoclonal to Actin Regulatory Protein CAPG
由来種	Mouse
アプリケーション	適用あり: WB, ELISA
種交差性	交差種: Human
免疫原	Recombinant full length Human Actin Regulatory Protein CAPG (AAH00728) with a proprietary tag.
ポジティブ・コントロール	Tagged recombinant Human Actin Regulatory Protein CAPG (Immunogen), HL-60 cell lysate.

製品の特性

製品の状態	Liquid
保存方法	Shipped at 4°C. Upon delivery aliquot and store at -20°C or -80°C. Avoid repeated freeze / thaw cycles.
バッファー	Constituent: Ascites
精製度	Ascites
ポリ/モノ	モノクローナル
アイソタイプ	IgG1
軽鎖の種類	kappa

アプリケーション

Our [Abpromise guarantee](#) covers the use of **ab89511** in the following tested applications.

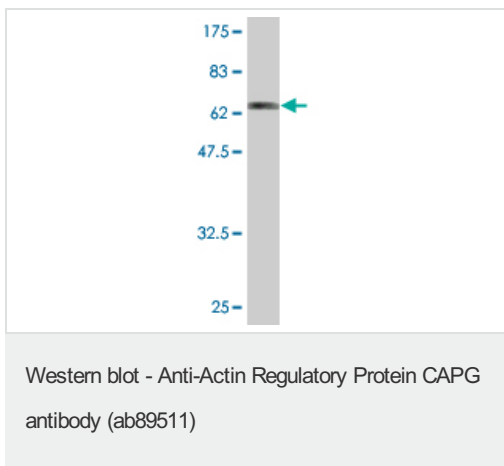
The application notes include recommended starting dilutions; optimal dilutions/concentrations should be determined by the end user.

アプリケーション	Abreviews	特記事項
WB		1/500 - 1/1000. Predicted molecular weight: 39 kDa.
ELISA		Use at an assay dependent dilution.

ターゲット情報

機能	Calcium-sensitive protein which reversibly blocks the barbed ends of actin filaments but does not sever preformed actin filaments. May play an important role in macrophage function. May play a role in regulating cytoplasmic and/or nuclear structures through potential interactions with actin. May bind DNA.
組織特異性	Macrophages and macrophage-like cells.
配列類似性	Belongs to the villin/gelsolin family. Contains 3 gelsolin-like repeats.
翻訳後修飾	The N-terminus is blocked.
細胞内局在	Cytoplasm. Nucleus. Melanosome. Identified by mass spectrometry in melanosome fractions from stage I to stage IV.

画像



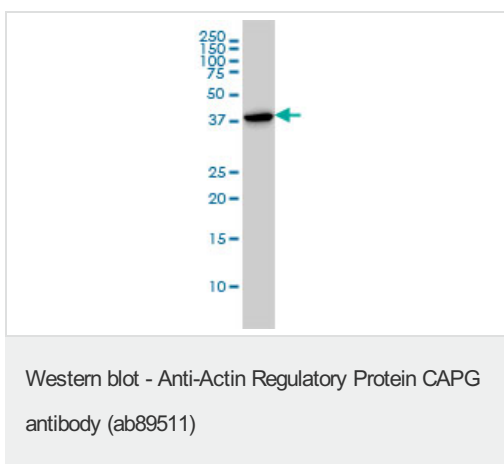
Anti-Actin Regulatory Protein CAPG antibody (ab89511) at 1/500 dilution + Tagged recombinant Human Actin Regulatory Protein CAPG at 0.2 µg

Predicted band size: 39 kDa

Observed band size: 64 kDa

[why is the actual band size different from the predicted?](#)

Western blot against tagged recombinant protein immunogen.
Predicted band size of immunogen is 64 kDa.



Anti-Actin Regulatory Protein CAPG antibody (ab89511) at 1/500 dilution + HL-60 cell lysate at 50 µg

Predicted band size: 39 kDa

Observed band size: 39 kDa

Please note: All products are "FOR RESEARCH USE ONLY AND ARE NOT INTENDED FOR DIAGNOSTIC OR THERAPEUTIC USE"

Our Abpromise to you: Quality guaranteed and expert technical support

- Replacement or refund for products not performing as stated on the datasheet
- Valid for 12 months from date of delivery
- Response to your inquiry within 24 hours

- We provide support in Chinese, English, French, German, Japanese and Spanish
- Extensive multi-media technical resources to help you
- We investigate all quality concerns to ensure our products perform to the highest standards

If the product does not perform as described on this datasheet, we will offer a refund or replacement. For full details of the Abpromise, please visit <https://www.abcam.co.jp/abpromise> or contact our technical team.

Terms and conditions

- Guarantee only valid for products bought direct from Abcam or one of our authorized distributors