

Product datasheet

Anti-Milk Fat Globule 1 antibody ab89232

★ ★ ☆ ☆ ☆ 1 Abreviews [画像数 2](#)

製品の概要

製品名	Anti-Milk Fat Globule 1 antibody
製品の詳細	Mouse polyclonal to Milk Fat Globule 1
由来種	Mouse
アプリケーション	適用あり: WB
種交差性	交差種: Human
免疫原	Recombinant full length protein corresponding to Human Milk Fat Globule 1.
ポジティブ・コントロール	Human pancreas

製品の特性

製品の状態	Liquid
保存方法	Shipped at 4°C. Upon delivery aliquot and store at -20°C. Avoid freeze / thaw cycles.
バッファー	Preservative: None Constituents: 1X PBS, pH 7.2
精製度	Protein A purified
ポリ/モノ	ポリクローナル
アイソタイプ	IgG

アプリケーション

Our [Abpromise guarantee](#) covers the use of **ab89232** in the following tested applications.

The application notes include recommended starting dilutions; optimal dilutions/concentrations should be determined by the end user.

アプリケーション	Abreviews	特記事項
WB	★ ★ ☆ ☆ ☆	Use a concentration of 1 µg/ml. Predicted molecular weight: 43 kDa.

ターゲット情報

機能 Plays an important role in the maintenance of intestinal epithelial homeostasis and the promotion

of mucosal healing. Promotes VEGF-dependent neovascularization (By similarity). Contributes to phagocytic removal of apoptotic cells in many tissues. Specific ligand for the alpha-v/beta-3 and alpha-v/beta-5 receptors. Also binds to phosphatidylserine-enriched cell surfaces in a receptor-independent manner. Zona pellucida-binding protein which may play a role in gamete interaction. Binds specifically to rotavirus and inhibits its replication.

Medin is the main constituent of aortic medial amyloid.

組織特異性

Mammary epithelial cell surfaces and aortic media. Overexpressed in several carcinomas.

配列類似性

Contains 1 EGF-like domain.

Contains 2 F5/8 type C domains.

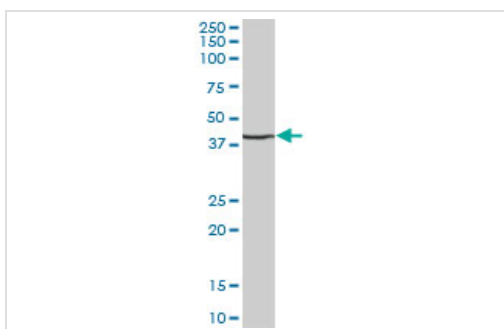
翻訳後修飾

Medin has a ragged N-terminus with minor species starting at Pro-264 and Gly-273.

細胞内局在

Membrane. Secreted.

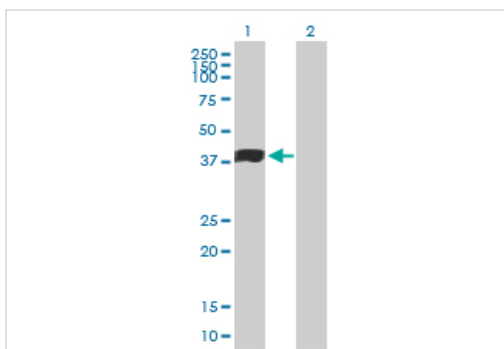
画像



Western blot - Anti-Milk Fat Globule 1 antibody (ab89232)

Anti-Milk Fat Globule 1 antibody (ab89232) at 1 µg/ml + Human pancreas cell lysate at 25 µg

Predicted band size: 43 kDa



Western blot - Anti-Milk Fat Globule 1 antibody (ab89232)

Anti-Milk Fat Globule 1 antibody (ab89232) at 1 µg/ml + Transfected 293T Cell Line at 25 µg

Predicted band size: 43 kDa

Observed band size: 42.57 kDa

Please note: All products are "FOR RESEARCH USE ONLY AND ARE NOT INTENDED FOR DIAGNOSTIC OR THERAPEUTIC USE"

Our Abpromise to you: Quality guaranteed and expert technical support

- Replacement or refund for products not performing as stated on the datasheet
- Valid for 12 months from date of delivery

- Response to your inquiry within 24 hours
- We provide support in Chinese, English, French, German, Japanese and Spanish
- Extensive multi-media technical resources to help you
- We investigate all quality concerns to ensure our products perform to the highest standards

If the product does not perform as described on this datasheet, we will offer a refund or replacement. For full details of the Abpromise, please visit <https://www.abcam.co.jp/abpromise> or contact our technical team.

Terms and conditions

- Guarantee only valid for products bought direct from Abcam or one of our authorized distributors