

Product datasheet

Anti-SDSL antibody ab88946

画像数 2

製品の概要

| | |
|--------------|---|
| 製品名 | Anti-SDSL antibody |
| 製品の詳細 | Mouse polyclonal to SDSL |
| 由来種 | Mouse |
| アプリケーション | 適用あり: WB |
| 種交差性 | 交差種: Human |
| 免疫原 | Full length Human protein (NP_612441.1) |
| ポジティブ・コントロール | Human liver tissue lysate SDSL transfected 293T cell lysate |

製品の特性

| | |
|--------|---|
| 製品の状態 | Liquid |
| 保存方法 | Shipped at 4°C. Upon delivery aliquot and store at -20°C. Avoid freeze / thaw cycles. |
| バッファー | Constituent: Whole serum |
| 精製度 | Whole antiserum |
| ポリ/モノ | ポリクローナル |
| アイソタイプ | IgG |

アプリケーション

Our [Abpromise guarantee](#) covers the use of **ab88946** in the following tested applications.

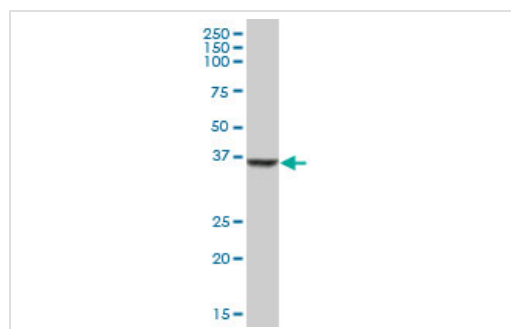
The application notes include recommended starting dilutions; optimal dilutions/concentrations should be determined by the end user.

| アプリケーション | Abreviews | 特記事項 |
|----------|-----------|---|
| WB | | 1/500 - 1/1000. Predicted molecular weight: 35 kDa. |

ターゲット情報

| | |
|-------|--|
| 機能 | Has low serine dehydratase and threonine dehydratase activity. |
| 配列類似性 | Belongs to the serine/threonine dehydratase family. |

画像

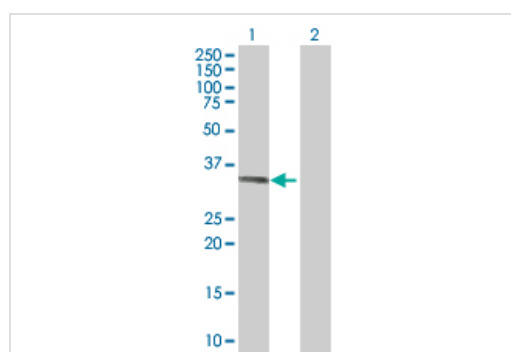


Western blot - Anti-SDSL antibody (ab88946)

Anti-SDSL antibody (ab88946) at 1/500 dilution + Human liver lysate at 25 µg

Developed using the ECL technique.

Predicted band size: 35 kDa



Western blot - Anti-SDSL antibody (ab88946)

All lanes : Anti-SDSL antibody (ab88946) at 1/500 dilution

Lane 1 : SDSL transfected 293T cell lysate

Lane 2 : Non-transfected 293T cell lysate

Lysates/proteins at 25 µg per lane.

Developed using the ECL technique.

Predicted band size: 35 kDa

Observed band size: 36 kDa

[why is the actual band size different from the predicted?](#)

Please note: All products are "FOR RESEARCH USE ONLY AND ARE NOT INTENDED FOR DIAGNOSTIC OR THERAPEUTIC USE"

Our Abpromise to you: Quality guaranteed and expert technical support

- Replacement or refund for products not performing as stated on the datasheet
- Valid for 12 months from date of delivery
- Response to your inquiry within 24 hours
- We provide support in Chinese, English, French, German, Japanese and Spanish
- Extensive multi-media technical resources to help you
- We investigate all quality concerns to ensure our products perform to the highest standards

If the product does not perform as described on this datasheet, we will offer a refund or replacement. For full details of the Abpromise, please visit <https://www.abcam.co.jp/abpromise> or contact our technical team.

Terms and conditions

- Guarantee only valid for products bought direct from Abcam or one of our authorized distributors