

Product datasheet

Anti-AMY1B antibody ab88646

画像数 2

製品の概要

製品名	Anti-AMY1B antibody
製品の詳細	Mouse polyclonal to AMY1B
由来種	Mouse
アプリケーション	適用あり: WB
種交差性	交差種: Human
免疫原	Full length Human AMY1B protein (NP_001008219.1).
ポジティブ・コントロール	Human pancreas tissue lysate. Cell lysate from transfected 293T cells.

製品の特性

製品の状態	Liquid
保存方法	Shipped at 4°C. Upon delivery aliquot and store at -20°C or -80°C. Avoid repeated freeze / thaw cycles.
バッファー	Preservative: None Constituents: PBS, pH 7.2
精製度	Protein A purified
ポリ/モノ	ポリクローナル
アイソタイプ	IgG

アプリケーション

Our [Abpromise guarantee](#) covers the use of **ab88646** in the following tested applications.

The application notes include recommended starting dilutions; optimal dilutions/concentrations should be determined by the end user.

アプリケーション	Abreviews	特記事項
WB		Use a concentration of 1 µg/ml. Detects a band of approximately 58 kDa (predicted molecular weight: 58 kDa).

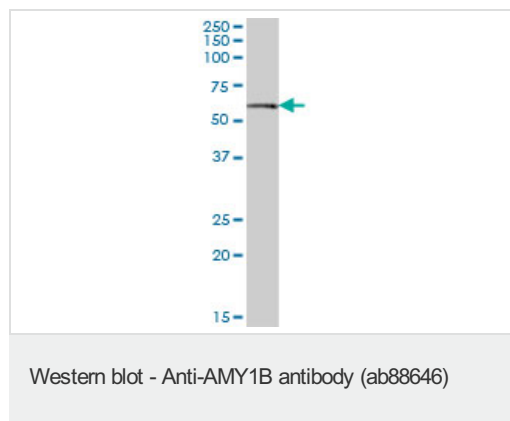
## 関連性

Amylases are secreted proteins that hydrolyze 1,4-alpha-glucoside bonds in oligosaccharides and polysaccharides and thus catalyze the first step in digestion of dietary starch and glycogen. The human genome has a cluster of several amylase genes that are expressed at high levels in either salivary gland or pancreas. This gene encodes an amylase isoenzyme produced by the salivary gland.

## 細胞内局在

Secreted

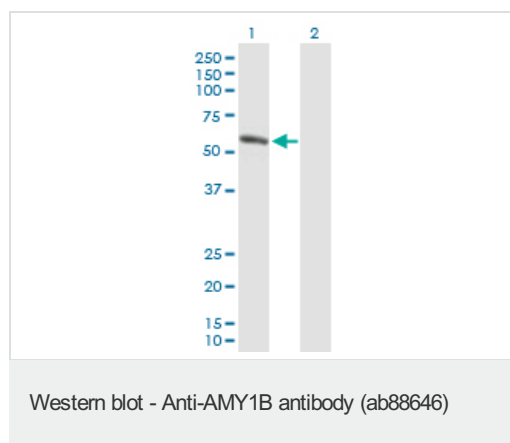
## 画像



Anti-AMY1B antibody (ab88646) at 1 µg/ml + Human pancreas tissue lysate at 50 µg

**Predicted band size:** 58 kDa

**Observed band size:** 58 kDa



**All lanes :** Anti-AMY1B antibody (ab88646) at 1 µg/ml

**Lane 1 :** cell lysate from AMY1B transfected 293T cells

**Lane 2 :** cell lysate from non transfected 293T cells

Lysates/proteins at 25 µg per lane.

**Predicted band size:** 58 kDa

**Observed band size:** 58 kDa

**Please note:** All products are "FOR RESEARCH USE ONLY AND ARE NOT INTENDED FOR DIAGNOSTIC OR THERAPEUTIC USE"

## Our Abpromise to you: Quality guaranteed and expert technical support

- Replacement or refund for products not performing as stated on the datasheet
- Valid for 12 months from date of delivery
- Response to your inquiry within 24 hours
- We provide support in Chinese, English, French, German, Japanese and Spanish
- Extensive multi-media technical resources to help you
- We investigate all quality concerns to ensure our products perform to the highest standards

If the product does not perform as described on this datasheet, we will offer a refund or replacement. For full details of the Abpromise, please visit <https://www.abcam.co.jp/abpromise> or contact our technical team.

## Terms and conditions

---

- Guarantee only valid for products bought direct from Abcam or one of our authorized distributors