

## Product datasheet

# Anti-CBF1 interacting corepressor antibody ab88490

### 画像数 2

#### 製品の概要

製品名	Anti-CBF1 interacting corepressor antibody
製品の詳細	Mouse monoclonal to CBF1 interacting corepressor
由来種	Mouse
アプリケーション	適用あり: WB, ELISA
種交差性	交差種: Human 交差が予測される動物種: Mouse, Rat, Chicken
免疫原	Recombinant fragment: HVNTDRECPL FGLSGINASS VPTDGSGPSM HPSELIAEMR NSGFALKRNV LGRNLTANDP SQEYVASEG, corresponding to amino acids 136-205 of Human CBF1 interacting corepressor (NP_004873) with a 26kDa tag <a href="#">Run BLAST with ExPASy</a> <a href="#">Run BLAST with NCBI</a>
ポジティブ・コントロール	<div style="border: 1px solid #ccc; padding: 5px; background-color: #f9f9f9;">           ウェスタン・プロット用ポジティブコントロール  <b>Recombinant Human CBF1 interacting corepressor protein</b> &gt;         </div> HeLa cell lysate

#### 製品の特性

製品の状態	Liquid
保存方法	Shipped at 4°C. Upon delivery aliquot and store at -20°C or -80°C. Avoid repeated freeze / thaw cycles.
バッファー	Preservative: None Constituents: 1X PBS, pH 7.2
精製度	Protein A purified
ポリ/モノ	モノクローナル
アイソタイプ	IgG1
軽鎖の種類	kappa

#### アプリケーション

Our [Abpromise guarantee](#) covers the use of **ab88490** in the following tested applications.

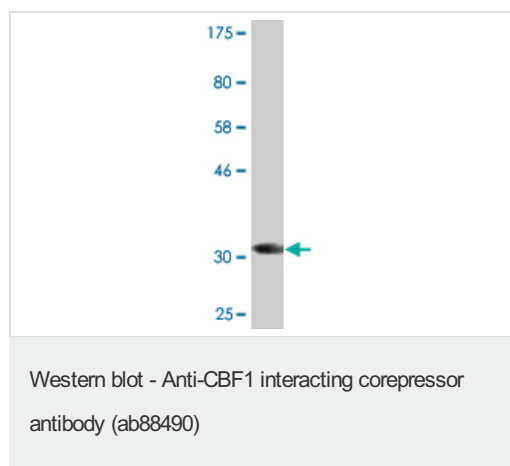
The application notes include recommended starting dilutions; optimal dilutions/concentrations should be determined by the end user.

アプリケーション	Abreviews	特記事項
WB		Use a concentration of 1 - 5 µg/ml. Predicted molecular weight: 52 kDa.
ELISA		Use at an assay dependent dilution.

## ターゲット情報

関連性	CBF1 interacting corepressor may modulate splice site selection during alternative splicing of pre-mRNAs. It regulates transcription and acts as corepressor for RBPSUH; recruits RBPSUH to the Sin3-histone deacetylase complex (HDAC).
細胞内局在	Nuclear

## 画像



Anti-CBF1 interacting corepressor antibody (ab88490) at 5 µg/ml + recombinant protein (immunogen) at 0.2 µg

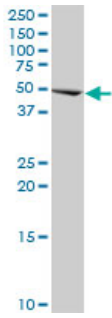
### Secondary

Goat anti-mouse IgG (H&L)-HRP conjugate at 1/5000 dilution

**Predicted band size:** 52 kDa

**Observed band size:** 34 kDa

The observed band size may not correspond to the predicted protein molecular weight as the immunogen (recombinant fragment) was used for the test lane.



Western blot - Anti-CBF1 interacting corepressor antibody (ab88490)

Anti-CBF1 interacting corepressor antibody (ab88490) at 5 µg/ml + HeLa cell lysate at 50 µg

**Predicted band size: 52 kDa**

**Please note:** All products are "FOR RESEARCH USE ONLY AND ARE NOT INTENDED FOR DIAGNOSTIC OR THERAPEUTIC USE"

### Our Abpromise to you: Quality guaranteed and expert technical support

- Replacement or refund for products not performing as stated on the datasheet
- Valid for 12 months from date of delivery
- Response to your inquiry within 24 hours
- We provide support in Chinese, English, French, German, Japanese and Spanish
- Extensive multi-media technical resources to help you
- We investigate all quality concerns to ensure our products perform to the highest standards

If the product does not perform as described on this datasheet, we will offer a refund or replacement. For full details of the Abpromise, please visit <https://www.abcam.co.jp/abpromise> or contact our technical team.

### Terms and conditions

- Guarantee only valid for products bought direct from Abcam or one of our authorized distributors