

## Product datasheet

# Anti-REG1 beta antibody ab87205

### 画像数 1

#### 製品の概要

|              |                                                                                                                                                                                                                                                      |
|--------------|------------------------------------------------------------------------------------------------------------------------------------------------------------------------------------------------------------------------------------------------------|
| 製品名          | Anti-REG1 beta antibody                                                                                                                                                                                                                              |
| 製品の詳細        | Rabbit polyclonal to REG1 beta                                                                                                                                                                                                                       |
| 由来種          | Rabbit                                                                                                                                                                                                                                               |
| アプリケーション     | 適用あり: WB                                                                                                                                                                                                                                             |
| 種交差性         | 交差種: Human                                                                                                                                                                                                                                           |
| 免疫原          | Synthetic peptide corresponding to a region within N terminal amino acids 2-51 (AQTNSFFMLI SSLMFLSLSQ GQESQTELPN PRISCPEGTN AYRSYCYFFN) of Human REG1 beta (NP_006498).<br><a href="#">Run BLAST with ExPASy</a> <a href="#">Run BLAST with NCBI</a> |
| ポジティブ・コントロール | Transfected 293T cell lysate.                                                                                                                                                                                                                        |

#### 製品の特性

|        |                                                                                                |
|--------|------------------------------------------------------------------------------------------------|
| 製品の状態  | Liquid                                                                                         |
| 保存方法   | Shipped at 4°C. Upon delivery aliquot and store at -20°C. Avoid repeated freeze / thaw cycles. |
| バッファー  | Preservative: None<br>Constituents: 2% Sucrose, PBS                                            |
| 精製度    | Immunogen affinity purified                                                                    |
| ポリ/モノ  | ポリクローナル                                                                                        |
| アイソタイプ | IgG                                                                                            |

#### アプリケーション

Our [Abpromise guarantee](#) covers the use of **ab87205** in the following tested applications.

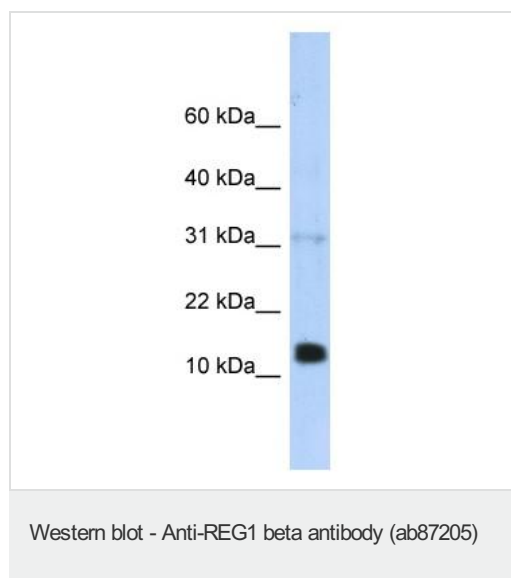
The application notes include recommended starting dilutions; optimal dilutions/concentrations should be determined by the end user.

| アプリケーション | Abreviews | 特記事項                                                                                                                                                 |
|----------|-----------|------------------------------------------------------------------------------------------------------------------------------------------------------|
| WB       |           | Use a concentration of 1 µg/ml. Predicted molecular weight: 19 kDa. Good results were obtained when blocked with 5% non-fat dry milk in 0.05% PBS-T. |

## ターゲット情報

|       |                                                                                                                                                                         |
|-------|-------------------------------------------------------------------------------------------------------------------------------------------------------------------------|
| 機能    | Might act as an inhibitor of spontaneous calcium carbonate precipitation. May be associated with neuronal sprouting in brain, and with brain and pancreas regeneration. |
| 配列類似性 | Contains 1 C-type lectin domain.                                                                                                                                        |
| 翻訳後修飾 | All O-linked glycans consist of Gal-GlcNAc-Gal-GalNAc tetrasaccharide core and get elongated (microheterogeneity).                                                      |
| 細胞内局在 | Secreted.                                                                                                                                                               |

## 画像



Anti-REG1 beta antibody (ab87205) at 1  $\mu$ g/ml (in 5% skim milk / PBS buffer) + Transfected 293T cell lysate at 10  $\mu$ g

### Secondary

HRP conjugated anti-Rabbit IgG at 1/50000 dilution

**Predicted band size:** 19 kDa

**Observed band size:** 15 kDa

Gel concentration: 10-20%

**Please note:** All products are "FOR RESEARCH USE ONLY AND ARE NOT INTENDED FOR DIAGNOSTIC OR THERAPEUTIC USE"

## Our Abpromise to you: Quality guaranteed and expert technical support

- Replacement or refund for products not performing as stated on the datasheet
- Valid for 12 months from date of delivery
- Response to your inquiry within 24 hours
- We provide support in Chinese, English, French, German, Japanese and Spanish
- Extensive multi-media technical resources to help you
- We investigate all quality concerns to ensure our products perform to the highest standards

If the product does not perform as described on this datasheet, we will offer a refund or replacement. For full details of the Abpromise, please visit <https://www.abcam.co.jp/abpromise> or contact our technical team.

## Terms and conditions

- Guarantee only valid for products bought direct from Abcam or one of our authorized distributors