


## Product datasheet

# Anti-Hydrogen Potassium ATPase Beta antibody ab87031

### 画像数 1

#### 製品の概要

製品名	Anti-Hydrogen Potassium ATPase Beta antibody
製品の詳細	Rabbit polyclonal to Hydrogen Potassium ATPase Beta
由来種	Rabbit
アプリケーション	適用あり: WB
種交差性	交差種: Human 交差が予測される動物種: Mouse, Rat, Rabbit, Horse, Chicken, Guinea pig, Cow, Cat, Dog, Pig 
免疫原	Synthetic peptide corresponding to a region within the internal sequence amino acids 216-265 (VKYYPPNGTF SLHYFPYYGK KAQPHYSNPL VAAKLLNIPR NAEVAVCKV) of human Hydrogen Potassium ATPase Beta (NP_000696). <a href="#">Run BLAST with ExPASy</a> <a href="#">Run BLAST with NCBI</a>
ポジティブ・コントロール	Transfected 293T cell lysate

#### 製品の特性

製品の状態	Liquid
保存方法	Shipped at 4°C. Upon delivery aliquot and store at -20°C. Avoid freeze / thaw cycles.
バッファー	Preservative: None Constituents: 2% Sucrose, PBS
精製度	Immunogen affinity purified
特記事項(精製)	Purified by peptide affinity chromatography method.
ポリ/モノ	ポリクローナル
アイソタイプ	IgG

#### アプリケーション

Our [Abpromise guarantee](#) covers the use of **ab87031** in the following tested applications.

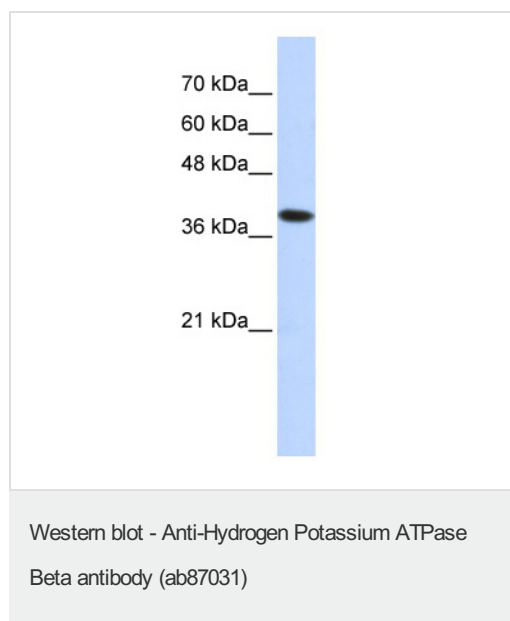
The application notes include recommended starting dilutions; optimal dilutions/concentrations should be determined by the end user.

アプリケーション	Abreviews	特記事項
WB		Use a concentration of 1 µg/ml. Predicted molecular weight: 33 kDa. Good results were obtained when blocked with 5% non-fat dry milk in 0.05% PBS-T.

## ターゲット情報

機能	Required for stabilization and maturation of the catalytic proton pump alpha subunit and may also be involved in cell adhesion and establishing epithelial cell polarity.
配列類似性	Belongs to the X(+)/potassium ATPases subunit beta family.
ドメイン	The C-terminal lobe folds into an immunoglobulin-like domain and mediates cell adhesion properties.
細胞内局在	Cell membrane.

## 画像



Anti-Hydrogen Potassium ATPase Beta antibody (ab87031) at 1 µg/ml + transfected 293T cell lysate at 10 µg

### Secondary

HRP conjugated anti-Rabbit IgG at 1/50000 dilution

**Predicted band size:** 33 kDa

Gel concentration 12%

**Please note:** All products are "FOR RESEARCH USE ONLY AND ARE NOT INTENDED FOR DIAGNOSTIC OR THERAPEUTIC USE"

## Our Promise to you: Quality guaranteed and expert technical support

- Replacement or refund for products not performing as stated on the datasheet
- Valid for 12 months from date of delivery
- Response to your inquiry within 24 hours
- We provide support in Chinese, English, French, German, Japanese and Spanish
- Extensive multi-media technical resources to help you
- We investigate all quality concerns to ensure our products perform to the highest standards

If the product does not perform as described on this datasheet, we will offer a refund or replacement. For full details of the Abpromise, please visit <https://www.abcam.co.jp/abpromise> or contact our technical team.

## Terms and conditions

---

- Guarantee only valid for products bought direct from Abcam or one of our authorized distributors