


Product datasheet

Anti-RERE antibody ab86231

画像数 1

製品の概要

製品名	Anti-RERE antibody
製品の詳細	Rabbit polyclonal to RERE
由来種	Rabbit
アプリケーション	適用あり: WB
種交差性	交差種: Human 交差が予測される動物種: Mouse, Rat, Rabbit, Horse, Chicken, Guinea pig, Cow, Cat, Saccharomyces cerevisiae, Drosophila melanogaster 
免疫原	Synthetic peptide corresponding to a region within the N terminal amino acids 1-50 (TADKDKDKDKEKDRDRDRDREREKRDKARESENSRPRRSC TLEGGAKNY A) of Human RERE, NP_036234
ポジティブ・コントロール	293T cell lysate

製品の特性

製品の状態	Liquid
保存方法	Shipped at 4°C. Upon delivery aliquot and store at -20°C. Avoid freeze / thaw cycles.
バッファー	Preservative: None Constituents: 2% Sucrose, PBS
精製度	Immunogen affinity purified
ポリ/モノ	ポリクローナル
アイソタイプ	IgG

アプリケーション

Our [Abpromise guarantee](#) covers the use of **ab86231** in the following tested applications.

The application notes include recommended starting dilutions; optimal dilutions/concentrations should be determined by the end user.

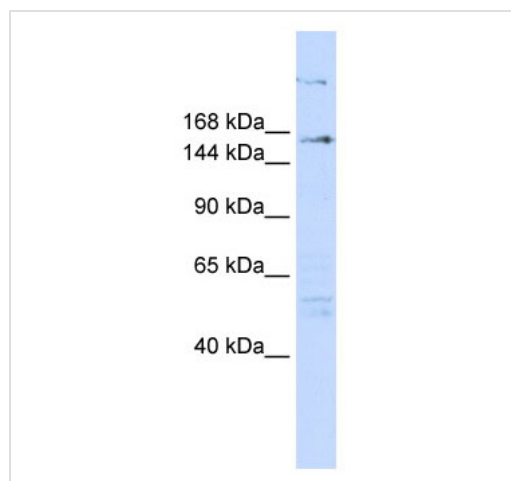
アプリケーション	Abreviews	特記事項
----------	-----------	------

アプリケーション	Abreviews	特記事項
WB		Use a concentration of 1 µg/ml. Predicted molecular weight: 172 kDa. Good results were obtained when blocked with 5% non-fat dry milk in 0.05% PBS-T.

ターゲット情報

機能	Plays a role as a transcriptional repressor during development. May play a role in the control of cell survival. Overexpression of RERE recruits BAX to the nucleus particularly to POD and triggers caspase-3 activation, leading to cell death.
組織特異性	Widely expressed. Expressed in tumor cell lines.
関連疾患	Note=A chromosomal aberration involving RERE is found in the neuroblastoma cell line. Translocation t(1;15)(p36.2;q24).
配列類似性	Contains 1 BAH domain. Contains 1 ELM2 domain. Contains 1 GATA-type zinc finger. Contains 1 SANT domain.
ドメイン	The interaction with ATN1 is mediated by the coiled coil domain.
細胞内局在	Nucleus. Localized in nuclear bodies of variables size. Colocalized with PML and BAX in nuclear PODs.

画像



Western blot - Anti-RERE antibody (ab86231)

Anti-RERE antibody (ab86231) at 1 µg/ml +
293T cell lysate at 10 µg

Secondary

HRP conjugated anti-Rabbit IgG at 1/50000
dilution

Predicted band size: 172 kDa

Gel concentration: 6-18%

We are unsure as to the identity of the extra
bands.

Please note: All products are "FOR RESEARCH USE ONLY AND ARE NOT INTENDED FOR DIAGNOSTIC OR THERAPEUTIC USE"

Our Abpromise to you: Quality guaranteed and expert technical support

- Replacement or refund for products not performing as stated on the datasheet
- Valid for 12 months from date of delivery
- Response to your inquiry within 24 hours

- We provide support in Chinese, English, French, German, Japanese and Spanish
- Extensive multi-media technical resources to help you
- We investigate all quality concerns to ensure our products perform to the highest standards

If the product does not perform as described on this datasheet, we will offer a refund or replacement. For full details of the Abpromise, please visit <https://www.abcam.co.jp/abpromise> or contact our technical team.

Terms and conditions

- Guarantee only valid for products bought direct from Abcam or one of our authorized distributors