

Product datasheet

Anti-S100 alpha 6 antibody - C-terminal ab85250

画像数 1

製品の概要

製品名	Anti-S100 alpha 6 antibody - C-terminal
製品の詳細	Rabbit polyclonal to S100 alpha 6 - C-terminal
由来種	Rabbit
アプリケーション	適用あり: WB, ELISA
種交差性	交差種: Mouse, Human
免疫原	KLH conjugated synthetic peptide selected from the C-terminal region of Human S100 alpha 6 (NP_055439).
ポジティブ・コントロール	Mouse lung tissue lysate.

製品の特性

製品の状態	Liquid
保存方法	Shipped at 4°C. Upon delivery aliquot and store at -20°C. Avoid freeze / thaw cycles.
バッファー	Preservative: 0.09% Sodium Azide Constituents: PBS
精製度	Ammonium Sulphate Precipitation
特記事項 (精製)	ab85250 is prepared by Saturated Ammonium Sulfate (SAS) precipitation followed by dialysis against PBS.
ポリ/モノ	ポリクローナル
アイソタイプ	IgG

アプリケーション

Our [Abpromise guarantee](#) covers the use of **ab85250** in the following tested applications.

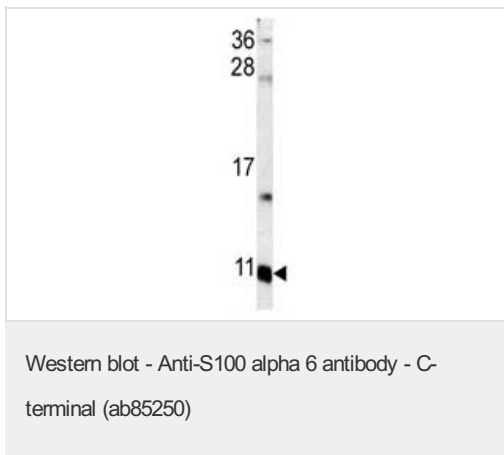
The application notes include recommended starting dilutions; optimal dilutions/concentrations should be determined by the end user.

アプリケーション	Abreviews	特記事項
WB		1/50 - 1/100. Predicted molecular weight: 10 kDa.
ELISA		1/1000.

ターゲット情報

機能	May function as calcium sensor and modulator, contributing to cellular calcium signaling. May function by interacting with other proteins, such as TPR-containing proteins, and indirectly play a role in many physiological processes such as the reorganization of the actin cytoskeleton and in cell motility. Binds 2 calcium ions. Calcium binding is cooperative.
配列類似性	Belongs to the S-100 family. Contains 2 EF-hand domains.
翻訳後修飾	The N-terminus is blocked.
細胞内局在	Nucleus envelope. Cytoplasm. Cell membrane.

画像



Anti-S100 alpha 6 antibody - C-terminal (ab85250) at 1/50 dilution + Mouse lung tissue lysate at 35 μ g

Predicted band size: 10 kDa

Observed band size: 10 kDa

Additional bands at: 14 kDa, 25 kDa, 36

kDa. We are unsure as to the identity of these extra bands.

Please note: All products are "FOR RESEARCH USE ONLY AND ARE NOT INTENDED FOR DIAGNOSTIC OR THERAPEUTIC USE"

Our Abpromise to you: Quality guaranteed and expert technical support

- Replacement or refund for products not performing as stated on the datasheet
- Valid for 12 months from date of delivery
- Response to your inquiry within 24 hours
- We provide support in Chinese, English, French, German, Japanese and Spanish
- Extensive multi-media technical resources to help you
- We investigate all quality concerns to ensure our products perform to the highest standards

If the product does not perform as described on this datasheet, we will offer a refund or replacement. For full details of the Abpromise, please visit <https://www.abcam.co.jp/abpromise> or contact our technical team.

Terms and conditions

- Guarantee only valid for products bought direct from Abcam or one of our authorized distributors