

## Product datasheet

# Anti-PEDF antibody ab85232

### 画像数 1

#### 製品の概要

|              |   |
|--------------|---|
| 製品名          | Anti-PEDF antibody  |
| 製品の詳細        | Rabbit polyclonal to PEDF   |
| 由来種          | Rabbit  |
| アプリケーション     | <b>適用あり:</b> WB, ELISA  |
| 種交差性         | <b>交差種:</b> Human   |
| 免疫原          | Synthetic peptide selected from the center region of Human PEDF, conjugated to KLH (NP_002606). |
| ポジティブ・コントロール | K562 cell line lysate.  |

#### 製品の特性

|           |  |
|-----------|--|
| 製品の状態     | Liquid   |
| 保存方法      | Shipped at 4°C. Upon delivery aliquot and store at -20°C. Avoid repeated freeze / thaw cycles.           |
| バッファー     | Preservative: 0.09% Sodium Azide<br>Constituents: PBS  |
| 精製度       | Ammonium Sulphate Precipitation  |
| 特記事項 (精製) | ab85232 is prepared by Saturated Ammonium Sulphate (SAS) precipitation followed by dialysis against PBS. |
| ポリ/モノ     | ポリクローナル  |
| アイソタイプ    | IgG  |

#### アプリケーション

Our [Abpromise guarantee](#) covers the use of **ab85232** in the following tested applications.

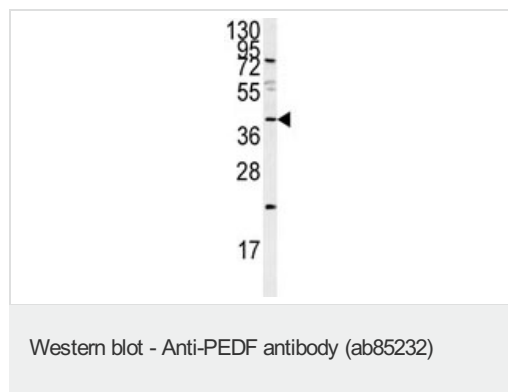
The application notes include recommended starting dilutions; optimal dilutions/concentrations should be determined by the end user.

| アプリケーション | Abreviews | 特記事項   |
|----------|-----------|--|
| WB       |           | 1/50 - 1/100. Detects a band of approximately 46 kDa (predicted molecular weight: 46 kDa). |
| ELISA    |           | 1/1000.  |

## ターゲット情報

|       |  |
|-------|--|
| 機能    | Neurotrophic protein; induces extensive neuronal differentiation in retinoblastoma cells. Potent inhibitor of angiogenesis. As it does not undergo the S (stressed) to R (relaxed) conformational transition characteristic of active serpins, it exhibits no serine protease inhibitory activity. |
| 組織特異性 | Retinal pigment epithelial cells and blood plasma.   |
| 配列類似性 | Belongs to the serpin family.  |
| 発生段階  | Expressed in quiescent cells.  |
| ドメイン  | The N-terminal (AA 44-121) exhibits neurite outgrowth-inducing activity. The C-terminal exposed loop (AA 382-418) is essential for serpin activity.  |
| 翻訳後修飾 | The N-terminus is blocked. Extracellular phosphorylation enhances antiangiogenic activity. N- and O-glycosylated. O-glycosylated with a core 1 or possibly core 8 glycan.  |
| 細胞内局在 | Secreted. Melanosome. Enriched in stage I melanosomes.   |

## 画像



Anti-PEDF antibody (ab85232) at 1/50 dilution + K562 cell line lysate at 35 µg

**Predicted band size:** 46 kDa

**Observed band size:** 46 kDa

**Additional bands at:** 24 kDa, 85 kDa. We are unsure as to the identity of these extra bands.

**Please note:** All products are "FOR RESEARCH USE ONLY AND ARE NOT INTENDED FOR DIAGNOSTIC OR THERAPEUTIC USE"

## Our Abpromise to you: Quality guaranteed and expert technical support

- Replacement or refund for products not performing as stated on the datasheet
- Valid for 12 months from date of delivery
- Response to your inquiry within 24 hours
- We provide support in Chinese, English, French, German, Japanese and Spanish
- Extensive multi-media technical resources to help you
- We investigate all quality concerns to ensure our products perform to the highest standards

If the product does not perform as described on this datasheet, we will offer a refund or replacement. For full details of the Abpromise, please visit <https://www.abcam.co.jp/abpromise> or contact our technical team.

## Terms and conditions

- Guarantee only valid for products bought direct from Abcam or one of our authorized distributors