


## Product datasheet

# Anti-RRP1B antibody ab84522

画像数 1

### 製品の概要

|              |   |
|--------------|---|
| 製品名          | Anti-RRP1B antibody   |
| 製品の詳細        | Rabbit polyclonal to RRP1B  |
| 由来種          | Rabbit  |
| アプリケーション     | 適用あり: WB  |
| 種交差性         | 交差種: Human<br>交差が予測される動物種: Mouse, Rat, Rabbit, Horse, Chicken, Guinea pig, Cow, Cat, Dog<br>   |
| 免疫原          | Synthetic peptide corresponding to a region within internal sequence amino acids 684-733 (VTFGLNRNMT AEFKKTDKSI LVSP TGPSRV AFDPEQKPLH GVLKTPTSSP) of Human RRP1B (NP_055871).<br><a href="#">Run BLAST with ExPASy</a> <a href="#">Run BLAST with NCBI</a> |
| ポジティブ・コントロール | MCF7 cell lysate.   |

### 製品の特性

|        |  |
|--------|--|
| 製品の状態  | Liquid   |
| 保存方法   | Shipped at 4°C. Upon delivery aliquot and store at -20°C. Avoid repeated freeze / thaw cycles. |
| バッファー  | Preservative: None<br>Constituents: 2% Sucrose, PBS  |
| 精製度    | Immunogen affinity purified  |
| ポリモノ   | ポリクローナル  |
| アイソタイプ | IgG  |

### アプリケーション

Our [Abpromise guarantee](#) covers the use of **ab84522** in the following tested applications.

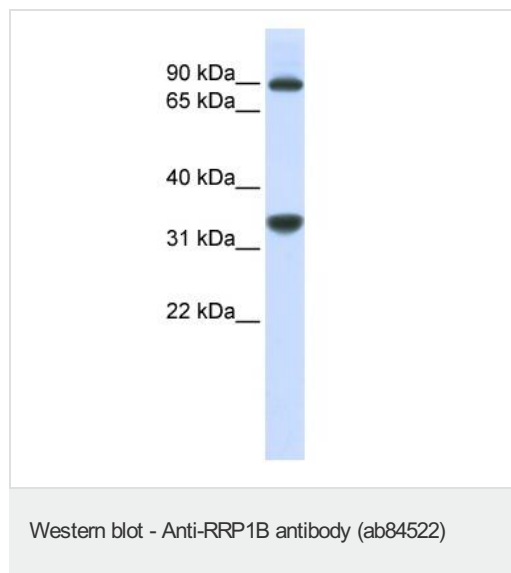
The application notes include recommended starting dilutions; optimal dilutions/concentrations should be determined by the end user.

| アプリケーション | Abreviews | 特記事項   |
|----------|-----------|--|
| WB       |           | Use a concentration of 1 µg/ml. Predicted molecular weight: 84 kDa. Good results were obtained when blocked with 5% non-fat dry milk in 0.05% PBS-T. |

## ターゲット情報

|       |   |
|-------|---|
| 関連性   | RRP1B belongs to the RRP1 family. It may be a novel susceptibility gene for breast cancer progression and metastasis. |
| 細胞内局在 | Nuclear; nucleolus.   |

## 画像



Anti-RRP1B antibody (ab84522) at 1 µg/ml (in 5% skim milk / PBS buffer) + MCF7 cell lysate at 10 µg

### Secondary

HRP conjugated anti-Rabbit IgG at 1/50000 dilution

**Predicted band size:** 84 kDa

**Observed band size:** 90 kDa

**Additional bands at:** 35 kDa. We are unsure as to the identity of these extra bands.

Gel concentration: 12%

**Please note:** All products are "FOR RESEARCH USE ONLY AND ARE NOT INTENDED FOR DIAGNOSTIC OR THERAPEUTIC USE"

## Our Abpromise to you: Quality guaranteed and expert technical support

- Replacement or refund for products not performing as stated on the datasheet
- Valid for 12 months from date of delivery
- Response to your inquiry within 24 hours
- We provide support in Chinese, English, French, German, Japanese and Spanish
- Extensive multi-media technical resources to help you
- We investigate all quality concerns to ensure our products perform to the highest standards

If the product does not perform as described on this datasheet, we will offer a refund or replacement. For full details of the Abpromise,

please visit <https://www.abcam.co.jp/abpromise> or contact our technical team.

## Terms and conditions

---

- Guarantee only valid for products bought direct from Abcam or one of our authorized distributors