

## Product datasheet

# Anti-DPCD antibody ab83476

### 画像数 1

#### 製品の概要

製品名	Anti-DPCD antibody
製品の詳細	Rabbit polyclonal to DPCD
由来種	Rabbit
アプリケーション	<b>適用あり:</b> WB, ELISA
種交差性	<b>交差種:</b> Human <b>交差が予測される動物種:</b> Mouse, Rat, Rabbit, Horse, Chicken, Guinea pig, Cow, Cat, Dog, Drosophila melanogaster 
免疫原	Synthetic peptide corresponding to a region within internal sequence amino acids 72-121 (APLGAGNLGP ELIKESNANP IFMRKDTKMS FQWRIRNLPY PKDVYSVSVD) of hman DPCD (NP_056263). <a href="#">Run BLAST with ExPASy</a> <a href="#">Run BLAST with NCBI</a>
ポジティブ・コントロール	Hela cell lysate.

#### 製品の特性

製品の状態	Liquid
保存方法	Shipped at 4°C. Upon delivery aliquot and store at -20°C. Avoid repeated freeze / thaw cycles.
バッファー	Preservative: 0.09% Sodium azide Constituents: 2% Sucrose, PBS
精製度	Immunogen affinity purified
特記事項(精製)	Purified by peptide affinity chromatography method.
ポリ/モノ	ポリクローナル
アイソタイプ	IgG

#### アプリケーション

Our [Abpromise guarantee](#) covers the use of **ab83476** in the following tested applications.

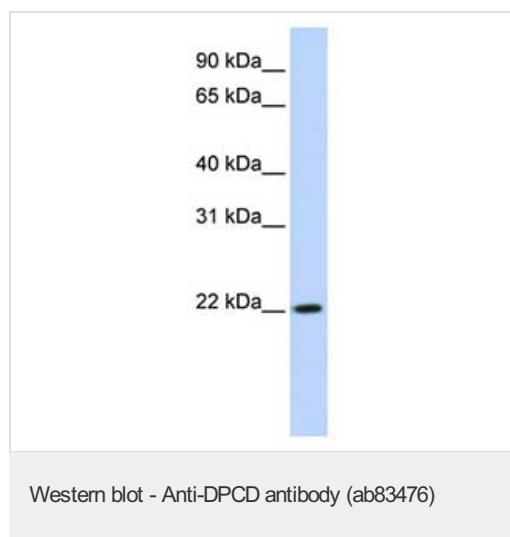
The application notes include recommended starting dilutions; optimal dilutions/concentrations should be determined by the end user.

アプリケーション	Abreviews	特記事項
WB		Use a concentration of 1 µg/ml. Predicted molecular weight: 23 kDa. Good results were obtained when blocked with 5% non-fat dry milk in 0.05% PBS-T.
ELISA		Use at an assay dependent concentration. Titre using peptide based assay: 1/312500.

## ターゲット情報

機能	May play a role in the formation or function of ciliated cells.
組織特異性	Highly expressed in the testis. Weakly expressed in pancreas, skeletal muscle and heart. Expression increases during ciliated cell differentiation.
配列類似性	Belongs to the DPCD family.

## 画像



Anti-DPCD antibody (ab83476) at 1 µg/ml (in 5% skim milk / PBS buffer) + HeLa cell lysate at 10 µg

### Secondary

HRP conjugated anti-Rabbit IgG at 1/50000 dilution

**Predicted band size:** 23 kDa

**Observed band size:** 23 kDa

Gel concentration: 12%

**Please note:** All products are "FOR RESEARCH USE ONLY AND ARE NOT INTENDED FOR DIAGNOSTIC OR THERAPEUTIC USE"

## Our Abpromise to you: Quality guaranteed and expert technical support

- Replacement or refund for products not performing as stated on the datasheet
- Valid for 12 months from date of delivery
- Response to your inquiry within 24 hours
- We provide support in Chinese, English, French, German, Japanese and Spanish
- Extensive multi-media technical resources to help you
- We investigate all quality concerns to ensure our products perform to the highest standards

If the product does not perform as described on this datasheet, we will offer a refund or replacement. For full details of the Abpromise, please visit <https://www.abcam.co.jp/abpromise> or contact our technical team.

## Terms and conditions

---

- Guarantee only valid for products bought direct from Abcam or one of our authorized distributors