


Product datasheet

Anti-Germinal Center Kinase antibody ab82870

1 References [画像数 1](#)

製品の概要

|              |                                                                                                                                                                                                                                                           |
|--------------|-----------------------------------------------------------------------------------------------------------------------------------------------------------------------------------------------------------------------------------------------------------|
| 製品名          | Anti-Germinal Center Kinase antibody                                                                                                                                                                                                                      |
| 製品の詳細        | Rabbit polyclonal to Germinal Center Kinase                                                                                                                                                                                                               |
| 由来種          | Rabbit                                                                                                                                                                                                                                                    |
| アプリケーション     | <b>適用あり:</b> WB                                                                                                                                                                                                                                           |
| 種交差性         | <b>交差種:</b> Human<br><b>交差が予測される動物種:</b> Mouse, Rat, Rabbit, Horse, Guinea pig, Cow, Cat, Dog, Pig, Zebrafish                                                            |
| 免疫原          | Synthetic peptide corresponding to a region within amino acids 216-265 (HLHPMRALML MSKSSFQPPK LRDKTRWTQN FHHFLKLALT KNPKKRPTAE) of human Germinal Center Kinase (NP_004570).<br><a href="#">Run BLAST with ExPASy</a> <a href="#">Run BLAST with NCBI</a> |
| ポジティブ・コントロール | Fetal liver lysate.                                                                                                                                                                                                                                       |

製品の特性

|        |                                                                                                |
|--------|------------------------------------------------------------------------------------------------|
| 製品の状態  | Liquid                                                                                         |
| 保存方法   | Shipped at 4°C. Upon delivery aliquot and store at -20°C. Avoid repeated freeze / thaw cycles. |
| バッファー  | Preservative: None<br>Constituents: 2% Sucrose, PBS                                            |
| 精製度    | Immunogen affinity purified                                                                    |
| ポリ/モノ  | ポリクローナル                                                                                        |
| アイソタイプ | IgG                                                                                            |

アプリケーション

Our [Abpromise guarantee](#) covers the use of **ab82870** in the following tested applications.

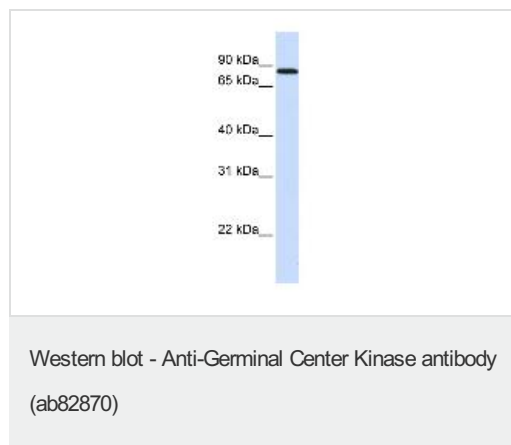
The application notes include recommended starting dilutions; optimal dilutions/concentrations should be determined by the end user.

| アプリケーション | Abreviews | 特記事項                                                                                                                                                 |
|----------|-----------|------------------------------------------------------------------------------------------------------------------------------------------------------|
| WB       |           | Use a concentration of 1 µg/ml. Predicted molecular weight: 92 kDa. Good results were obtained when blocked with 5% non-fat dry milk in 0.05% PBS-T. |

## ターゲット情報

|       |                                                                                                                                                                                                                          |
|-------|--------------------------------------------------------------------------------------------------------------------------------------------------------------------------------------------------------------------------|
| 機能    | Enhances MAP3K1 oligomerization, which may relieve amino-terminal mediated MAP3K1 autoinhibition and lead to activation following autophosphorylation. May play a role in the regulation of vesicle targeting or fusion. |
| 組織特異性 | Highly expressed in germinal center but not mantle zone B-cells. Also expressed in lung, brain and placenta and at lower levels in other tissues examined.                                                               |
| 配列類似性 | Belongs to the protein kinase superfamily. STE Ser/Thr protein kinase family. STE20 subfamily. Contains 1 CNH domain.<br>Contains 1 protein kinase domain.                                                               |
| 細胞内局在 | Cytoplasm. Basolateral cell membrane. Golgi apparatus membrane.                                                                                                                                                          |

## 画像



Anti-Germinal Center Kinase antibody (ab82870) at 1 µg/ml + fetal liver lysate at 10 µg

### Secondary

HRP conjugated anti-Rabbit IgG at 1/50000 dilution

**Predicted band size:** 92 kDa

**Observed band size:** 89 kDa

**Please note:** All products are "FOR RESEARCH USE ONLY AND ARE NOT INTENDED FOR DIAGNOSTIC OR THERAPEUTIC USE"

## Our Abpromise to you: Quality guaranteed and expert technical support

- Replacement or refund for products not performing as stated on the datasheet
- Valid for 12 months from date of delivery
- Response to your inquiry within 24 hours
- We provide support in Chinese, English, French, German, Japanese and Spanish
- Extensive multi-media technical resources to help you
- We investigate all quality concerns to ensure our products perform to the highest standards

If the product does not perform as described on this datasheet, we will offer a refund or replacement. For full details of the Abpromise, please visit <https://www.abcam.co.jp/abpromise> or contact our technical team.

## Terms and conditions

---

- Guarantee only valid for products bought direct from Abcam or one of our authorized distributors