

Product datasheet

Anti-MCM2 antibody [CRCT2.1] ab81706

画像数 2

製品の概要

製品名	Anti-MCM2 antibody [CRCT2.1]
製品の詳細	Mouse monoclonal [CRCT2.1] to MCM2
由来種	Mouse
アプリケーション	適用あり: WB, IHC-P
種交差性	交差種: Human
免疫原	Bacterially expressed human MCM2
エピトープ	Not determined
ポジティブ・コントロール	HeLa cells. Tonsil

製品の特性

製品の状態	Liquid
保存方法	Shipped at 4°C. Upon delivery aliquot and store at -20°C or -80°C. Avoid repeated freeze / thaw cycles.
バッファー	Preservative: None Constituents: 10mM PBS, pH 7.4
精製度	Protein G purified
ポリ/モノ	モノクローナル
クローン名	CRCT2.1
アイソタイプ	IgG1

アプリケーション

Our [Abpromise guarantee](#) covers the use of **ab81706** in the following tested applications.

The application notes include recommended starting dilutions; optimal dilutions/concentrations should be determined by the end user.

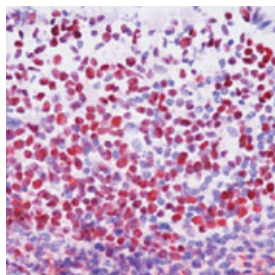
アプリケーション	Abreviews	特記事項
WB		Use a concentration of 2 - 4 µg/ml. Predicted molecular weight: 102 kDa.

アプリケーション	Abreviews	特記事項
IHC-P		1/50. Perform heat mediated antigen retrieval before commencing with IHC staining protocol.

ターゲット情報

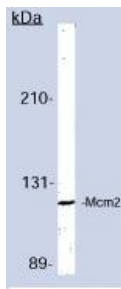
機能	Acts as component of the MCM2-7 complex (MCM complex) which is the putative replicative helicase essential for 'once per cell cycle' DNA replication initiation and elongation in eukaryotic cells. The active ATPase sites in the MCM2-7 ring are formed through the interaction surfaces of two neighboring subunits such that a critical structure of a conserved arginine finger motif is provided in trans relative to the ATP-binding site of the Walker A box of the adjacent subunit. The six ATPase active sites, however, are likely to contribute differentially to the complex helicase activity. Required for the entry in S phase and for cell division.
配列類似性	Belongs to the MCM family. Contains 1 MCM domain.
翻訳後修飾	Phosphorylated on Ser-108 by ATR in proliferating cells. Ser-108 proliferation is increased by genotoxic agents. Ser-40 is mediated by the CDC7-DBF4 and CDC7-DBF4B complexes, while Ser-53 phosphorylation is only mediated by the CDC7-DBF4 complex. Phosphorylation by the CDC7-DBF4 complex during G1/S phase is required for the initiation of DNA replication.
細胞内局在	Nucleus.

画像



Formalin fixed, paraffin embedded human tonsil tissue stained with anti MCM2 (form of ab81706 containing BSA and azide) at a dilution of 1/50. Peroxidase conjugate and AEC chromogen were used. Note nuclear staining of lymphocytes.

Immunohistochemistry (Formalin/PFA-fixed paraffin-embedded sections) - Anti-MCM2 antibody
[CRCT2.1] (ab81706)



anti MCM2 (form of ab81706 containing BSA and azide) at 4 µg/ml + human cells

Predicted band size: 102 kDa

Observed band size: 102 kDa

Western blot - Anti-MCM2 antibody [CRCT2.1]
(ab81706)

Please note: All products are "FOR RESEARCH USE ONLY AND ARE NOT INTENDED FOR DIAGNOSTIC OR THERAPEUTIC USE"

Our Abpromise to you: Quality guaranteed and expert technical support

- Replacement or refund for products not performing as stated on the datasheet
- Valid for 12 months from date of delivery
- Response to your inquiry within 24 hours
- We provide support in Chinese, English, French, German, Japanese and Spanish
- Extensive multi-media technical resources to help you
- We investigate all quality concerns to ensure our products perform to the highest standards

If the product does not perform as described on this datasheet, we will offer a refund or replacement. For full details of the Abpromise, please visit <https://www.abcam.co.jp/abpromise> or contact our technical team.

Terms and conditions

- Guarantee only valid for products bought direct from Abcam or one of our authorized distributors