

Product datasheet

Anti-Prolactin Receptor / PRL-R antibody [B6.2] ab80565

画像数 1

製品の概要

製品名	Anti-Prolactin Receptor / PRL-R antibody [B6.2]
製品の詳細	Mouse monoclonal [B6.2] to Prolactin Receptor / PRL-R
由来種	Mouse
アプリケーション	適用あり: IHC-P
種交差性	交差種: Human
免疫原	Semi-purified human Prolactin Receptor.
ポジティブ・コントロール	Breast carcinoma

製品の特性

製品の状態	Liquid
保存方法	Shipped at 4°C. Upon delivery aliquot and store at -20°C or -80°C. Avoid repeated freeze / thaw cycles.
バッファー	Preservative: None Constituents: 10mM PBS, pH 7.4
精製度	Protein G purified
特記事項 (精製)	Purified from ascites fluid.
ポリ/モノ	モノクローナル
クローン名	B6.2
アイソタイプ	IgG1

アプリケーション

Our [Abpromise guarantee](#) covers the use of **ab80565** in the following tested applications.

The application notes include recommended starting dilutions; optimal dilutions/concentrations should be determined by the end user.

アプリケーション	Abreviews	特記事項
----------	-----------	------

IHC-P

追加情報

IHC-P: Use at a concentration of 1 - 2 µg/ml (for 30 minutes at room temperature). Staining of

formalin/paraffin tissues requires digestion of tissue sections with pepsin at 1 mg/ml (in Tris-HCl, pH 2.0 for 15 minutes at room temperature or 10 minutes at 37 °C).

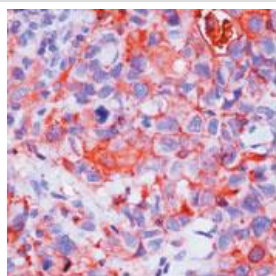
Not yet tested in other applications.

Optimal dilutions/concentrations should be determined by the end user.

ターゲット情報

機能	This is a receptor for the anterior pituitary hormone prolactin (PRL). Isoform 4 is unable to transduce prolactin signaling. Isoform 6 is unable to transduce prolactin signaling.
組織特異性	Expressed in breast, placenta, kidney, liver and pancreas.
配列類似性	Belongs to the type I cytokine receptor family. Type 1 subfamily. Contains 2 fibronectin type-III domains.
ドメイン	The WSXWS motif appears to be necessary for proper protein folding and thereby efficient intracellular transport and cell-surface receptor binding. The box 1 motif is required for JAK interaction and/or activation.
細胞内局在	Secreted and Membrane.

画像



Formalin fixed, paraffin embedded human breast cancer stained with ab80565 at 2 µg/ml. Peroxidase conjugate and AEC chromogen were used. Note cell membrane and cytoplasmic staining of tumor cells.

Immunohistochemistry (Formalin/PFA-fixed paraffin-embedded sections) - Anti-Prolactin Receptor antibody [B6.2] (ab80565)

Please note: All products are "FOR RESEARCH USE ONLY AND ARE NOT INTENDED FOR DIAGNOSTIC OR THERAPEUTIC USE"

Our Abpromise to you: Quality guaranteed and expert technical support

- Replacement or refund for products not performing as stated on the datasheet
- Valid for 12 months from date of delivery
- Response to your inquiry within 24 hours
- We provide support in Chinese, English, French, German, Japanese and Spanish
- Extensive multi-media technical resources to help you
- We investigate all quality concerns to ensure our products perform to the highest standards

If the product does not perform as described on this datasheet, we will offer a refund or replacement. For full details of the Abpromise, please visit <https://www.abcam.co.jp/abpromise> or contact our technical team.

Terms and conditions

- Guarantee only valid for products bought direct from Abcam or one of our authorized distributors