

Product datasheet

Anti-JPH1 antibody ab79062

画像数 1

製品の概要

製品名	Anti-JPH1 antibody
製品の詳細	Rabbit polyclonal to JPH1
由来種	Rabbit
アプリケーション	適用あり: WB, ELISA
種交差性	交差種: Mouse, Rat, Human
免疫原	A 15 amino acid synthetic peptide near the carboxy terminus of human JPH1 (AAI39833).
ポジティブ・コントロール	293 cell lysate.

製品の特性

製品の状態	Liquid
保存方法	Shipped at 4°C. Store at +4°C.
バッファー	Preservative: 0.02% Sodium Azide Constituents: PBS
精製度	Immunogen affinity purified
特記事項(精製)	Affinity chromatography purified via peptide column
ポリモノ	ポリクローナル
アイソタイプ	IgG

アプリケーション

Our [Abpromise guarantee](#) covers the use of **ab79062** in the following tested applications.

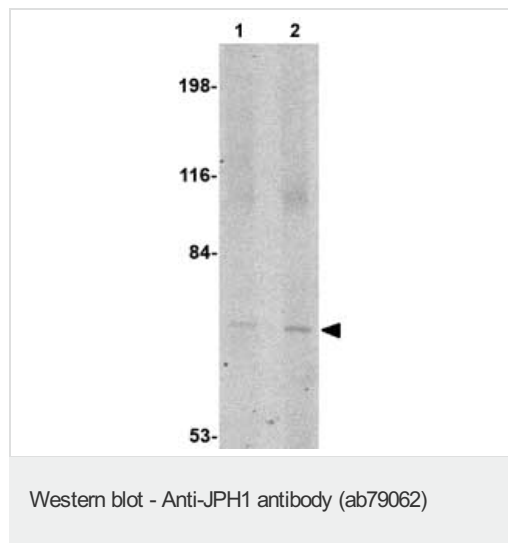
The application notes include recommended starting dilutions; optimal dilutions/concentrations should be determined by the end user.

アプリケーション	Abreviews	特記事項
WB		Use a concentration of 1 - 2 µg/ml. Predicted molecular weight: 72 kDa.
ELISA		Use at an assay dependent dilution.

ターゲット情報

機能	Junctophilins contribute to the formation of junctional membrane complexes (JMCs) which link the plasma membrane with the endoplasmic or sarcoplasmic reticulum in excitable cells. Provides a structural foundation for functional cross-talk between the cell surface and intracellular calcium release channels. JPH1 contributes to the construction of the skeletal muscle triad by linking the t-tubule (transverse-tubule) and SR (sarcoplasmic reticulum) membranes.
組織特異性	Abundantly expressed in skeletal muscle. Very low levels in heart.
配列類似性	Belongs to the junctophilin family. Contains 7 MORN repeats.
ドメイン	The MORN (membrane occupation and recognition nexus) repeats contribute to the plasma membrane binding, possibly by interacting with phospholipids.
細胞内局在	Cell membrane. Endoplasmic reticulum membrane. Sarcoplasmic reticulum membrane. Localized predominantly on the plasma membrane. The transmembrane domain is anchored in endoplasmic/sarcoplasmic reticulum membrane, while the N-terminal part associates with the plasma membrane. In skeletal muscle cells, it is predominantly localized at the junction of the A and I bands.

画像



Lane 1 : Anti-JPH1 antibody (ab79062) at 1 µg/ml

Lane 2 : Anti-JPH1 antibody (ab79062) at 2 µg/ml

All lanes : 293 cell lysate

Lysates/proteins at 15 µg per lane.

Predicted band size: 72 kDa

Observed band size: 72 kDa

Please note: All products are "FOR RESEARCH USE ONLY AND ARE NOT INTENDED FOR DIAGNOSTIC OR THERAPEUTIC USE"

Our Promise to you: Quality guaranteed and expert technical support

- Replacement or refund for products not performing as stated on the datasheet
- Valid for 12 months from date of delivery
- Response to your inquiry within 24 hours
- We provide support in Chinese, English, French, German, Japanese and Spanish
- Extensive multi-media technical resources to help you
- We investigate all quality concerns to ensure our products perform to the highest standards

If the product does not perform as described on this datasheet, we will offer a refund or replacement. For full details of the Abpromise, please visit <https://www.abcam.co.jp/abpromise> or contact our technical team.

Terms and conditions

- Guarantee only valid for products bought direct from Abcam or one of our authorized distributors