


Product datasheet

Anti-Spindly antibody ab76670

画像数 1

製品の概要

製品名	Anti-Spindly antibody
製品の詳細	Mouse monoclonal to Spindly
由来種	Mouse
アプリケーション	適用あり: ELISA, WB
種交差性	交差種: Recombinant fragment 交差が予測される動物種: Human 
免疫原	Recombinant full length Human CCDC99 protein (AAH12568, 1 a.a. ~ 606 a.a) with tag.
ポジティブ・コントロール	Recombinant tagged full length human CCDC99.

製品の特性

製品の状態	Liquid
保存方法	Shipped at 4°C. Upon delivery aliquot. Store at -20°C or -80°C. Avoid freeze / thaw cycle.
バッファー	Preservative: None Constituents: 1X PBS, pH 7.2
精製度	Protein A purified
ポリ/モノ	モノクローナル
アイソタイプ	IgG2b
軽鎖の種類	kappa

アプリケーション

Our [Abpromise guarantee](#) covers the use of **ab76670** in the following tested applications.

The application notes include recommended starting dilutions; optimal dilutions/concentrations should be determined by the end user.

アプリケーション	Abreviews	特記事項
ELISA		
WB		

追加情報

ELISA: Use at an assay dependent dilution.

WB: Use at a concentration of 1 - 5 µg/ml. Predicted molecular weight: 70 kDa.

This antibody has only been tested in WB against the recombinant protein used as immunogen. We have no data on the detection of endogenous protein.

Not yet tested in other applications.

Optimal dilutions/concentrations should be determined by the end user.

ターゲット情報

機能

Required for the localization of dynein and dynactin to the mitotic kintochore. Dynein is believed to control the initial lateral interaction between the kinetochore and spindle microtubules and to facilitate the subsequent formation of end-on kinetochore-microtubule attachments mediated by the NDC80 complex. Also required for correct spindle orientation. Does not appear to be required for the removal of spindle assembly checkpoint (SAC) proteins from the kinetochore upon bipolar spindle attachment.

配列類似性

Belongs to the Spindly family.

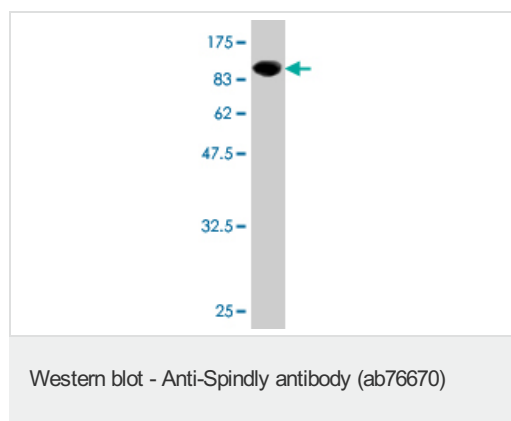
翻訳後修飾

Phosphorylated upon DNA damage, probably by ATM or ATR.

細胞内局在

Cytoplasm > cytoskeleton > centrosome. Chromosome > centromere > kinetochore. Nucleus. Cytoplasm > cytoskeleton > spindle pole. Localizes to the nucleus in interphase and to the kinetochore in early prometaphase. Relocalizes to the mitotic spindle pole before metaphase and is subsequently lost from the spindle poles after chromosome congression is completed. Removal of this protein from the kinetochore requires the dynein/dynactin complex.

画像



Anti-Spindly antibody (ab76670) at 1 µg/ml +
Recombinant tagged full length human
CCDC99 at 0.2 µg

Secondary

Goat Anti-Mouse IgG (H&L)-HRP at 1/5000
dilution

Predicted band size: 70 kDa

Observed band size: 93 kDa

Western blot against tagged recombinant
protein immunogen. Predicted band size of
immunogen is 93kDa.

Our Abpromise to you: Quality guaranteed and expert technical support

- Replacement or refund for products not performing as stated on the datasheet
- Valid for 12 months from date of delivery
- Response to your inquiry within 24 hours

- We provide support in Chinese, English, French, German, Japanese and Spanish
- Extensive multi-media technical resources to help you
- We investigate all quality concerns to ensure our products perform to the highest standards

If the product does not perform as described on this datasheet, we will offer a refund or replacement. For full details of the Abpromise, please visit <https://www.abcam.co.jp/abpromise> or contact our technical team.

Terms and conditions

- Guarantee only valid for products bought direct from Abcam or one of our authorized distributors