


Product datasheet

Anti-Cytoplasmic dynein 1 intermediate chain 1 antibody ab75162

画像数 1

製品の概要

製品名	Anti-Cytoplasmic dynein 1 intermediate chain 1 antibody
製品の詳細	Rabbit polyclonal to Cytoplasmic dynein 1 intermediate chain 1
由来種	Rabbit
アプリケーション	適用あり: WB, ELISA
種交差性	交差種: Human 交差が予測される動物種: Mouse, Rat, Rabbit, Horse, Chicken, Guinea pig, Cow, Cat, Dog 
免疫原	A synthetic peptide corresponding to a region of Human Dynein axonemal intermediate chain 1.
ポジティブ・コントロール	Fetal brain lysate

製品の特性

製品の状態	Liquid
保存方法	Shipped at 4°C. Upon delivery aliquot and store at -20°C. Avoid freeze / thaw cycles.
バッファー	Preservative: None Constituents: 2% Sucrose, PBS
精製度	Immunogen affinity purified
ポリ/モノ	ポリクローナル
アイソタイプ	IgG

アプリケーション

Our [Abpromise guarantee](#) covers the use of **ab75162** in the following tested applications.

The application notes include recommended starting dilutions; optimal dilutions/concentrations should be determined by the end user.

アプリケーション	Abreviews	特記事項
WB		Use a concentration of 1 µg/ml. Detects a band of approximately 65 kDa (predicted molecular weight: 73 kDa). Good results were obtained when blocked with 5% non-fat dry milk in 0.05% PBS-T.

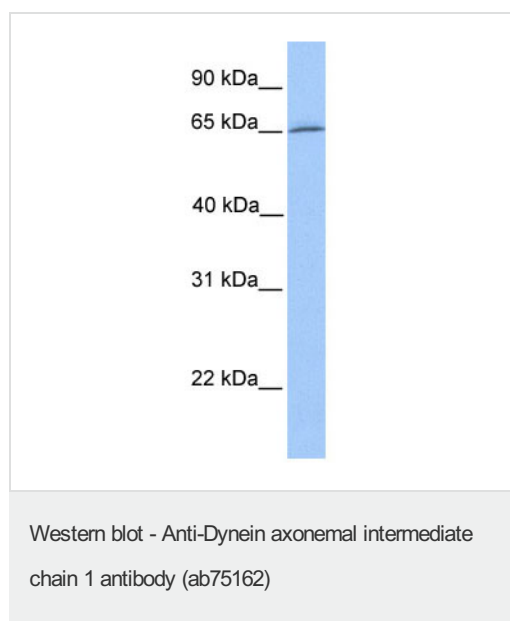
アプリ ケーショ ン	Abreviews	特記事項
------------------	-----------	------

ELISA Use at an assay dependent concentration.
ELISA titre using peptide based assay 1:62500.

ターゲット情報

機能	Acts as one of several non-catalytic accessory components of the cytoplasmic dynein 1 complex that are thought to be involved in linking dynein to cargos and to adapter proteins that regulate dynein function. Cytoplasmic dynein 1 acts as a motor for the intracellular retrograde motility of vesicles and organelles along microtubules. The intermediate chains mediate the binding of dynein to dynactin via its 150 kDa component (p150-glued) DCNT1. May play a role in mediating the interaction of cytoplasmic dynein with membranous organelles and kinetochores.
配列類似性	Belongs to the dynein intermediate chain family. Contains 7 WD repeats.
細胞内局在	Cytoplasm. Chromosome, centromere, kinetochore. Cytoplasm, cytoskeleton, spindle pole.

画像



Anti-Cytoplasmic dynein 1 intermediate chain 1 antibody (ab75162) at 1 µg/ml + Human fetal brain lysate at 10 µg

Secondary

HRP conjugated anti-Rabbit IgG at 1/50000 dilution

Predicted band size: 73 kDa

Observed band size: 65 kDa

Gel concentration: 12%

Please note: All products are "FOR RESEARCH USE ONLY AND ARE NOT INTENDED FOR DIAGNOSTIC OR THERAPEUTIC USE"

Our Promise to you: Quality guaranteed and expert technical support

- Replacement or refund for products not performing as stated on the datasheet
- Valid for 12 months from date of delivery
- Response to your inquiry within 24 hours

- We provide support in Chinese, English, French, German, Japanese and Spanish
- Extensive multi-media technical resources to help you
- We investigate all quality concerns to ensure our products perform to the highest standards

If the product does not perform as described on this datasheet, we will offer a refund or replacement. For full details of the Abpromise, please visit <https://www.abcam.co.jp/abpromise> or contact our technical team.

Terms and conditions

- Guarantee only valid for products bought direct from Abcam or one of our authorized distributors