

Product datasheet

Anti-DNAL1 antibody ab75108

画像数 1

製品の概要

製品名	Anti-DNAL1 antibody
製品の詳細	Rabbit polyclonal to DNAL1
由来種	Rabbit
特異性	ab75108 detects endogenous levels of total DNAL1 protein.
アプリケーション	適用あり: WB, ELISA
種交差性	交差種: Human 交差が予測される動物種: Mouse, Rat ▲
免疫原	Synthesized peptide derived from an internal region of human DNAL1.
ポジティブ・コントロール	Extracts from HepG2, HeLa and MCF-7 cells.

製品の特性

製品の状態	Liquid
保存方法	Shipped at 4°C. Upon delivery aliquot and store at -20°C. Avoid freeze / thaw cycles.
バッファー	Preservative: 0.02% Sodium Azide Constituents: 50% Glycerol, PBS (without Mg ²⁺ and Ca ²⁺), 150mM Sodium chloride, pH 7.4
精製度	Immunogen affinity purified
特記事項 (精製)	The antibody was affinity purified from rabbit antiserum by affinity chromatography using epitope specific immunogen.
ポリ/モノ	ポリクローナル
アイソタイプ	IgG

アプリケーション

Our [Abpromise guarantee](#) covers the use of **ab75108** in the following tested applications.

The application notes include recommended starting dilutions; optimal dilutions/concentrations should be determined by the end user.

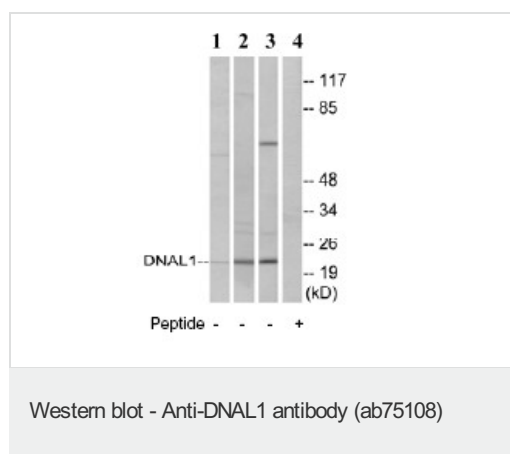
アプリケーション	Abreviews	特記事項
WB		1/500 - 1/1000. Predicted molecular weight: 22 kDa.

アプリケーション	Abreviews	特記事項
ELISA		1/40000.

ターゲット情報

組織特異性	Expressed in tissues carrying motile cilia such as testis.
配列類似性	Belongs to the dynein light chain LC1-type family. Contains 4 LRR (leucine-rich) repeats. Contains 1 LRRCT domain.

画像



All lanes : Anti-DNAL1 antibody (ab75108) at 1/500 dilution

Lane 1 : extracts from HepG2 cells

Lane 2 : extracts from HeLa cells

Lane 3 : extracts from MCF-7 cells

Lane 4 : extracts from HeLa cells with immunising peptide at 10 µg

Lysates/proteins at 10 µg per lane.

Predicted band size: 22 kDa

Observed band size: 22 kDa

Additional bands at: 65 kDa. We are unsure as to the identity of these extra bands.

Please note: All products are "FOR RESEARCH USE ONLY AND ARE NOT INTENDED FOR DIAGNOSTIC OR THERAPEUTIC USE"

Our Abpromise to you: Quality guaranteed and expert technical support

- Replacement or refund for products not performing as stated on the datasheet
- Valid for 12 months from date of delivery
- Response to your inquiry within 24 hours
- We provide support in Chinese, English, French, German, Japanese and Spanish
- Extensive multi-media technical resources to help you
- We investigate all quality concerns to ensure our products perform to the highest standards

If the product does not perform as described on this datasheet, we will offer a refund or replacement. For full details of the Abpromise, please visit <https://www.abcam.co.jp/abpromise> or contact our technical team.

Terms and conditions

- Guarantee only valid for products bought direct from Abcam or one of our authorized distributors