

Product datasheet

Anti-CDC40 antibody ab74677

★★★★☆ 2 Abreviews [画像数 1](#)

製品の概要

製品名	Anti-CDC40 antibody
製品の詳細	Rabbit polyclonal to CDC40
由来種	Rabbit
アプリケーション	適用あり: WB, ELISA
種交差性	交差種: Human 交差が予測される動物種: Mouse, Rat
免疫原	Synthesized peptide derived from an internal region of human CDC40
ポジティブ・コントロール	Extracts from K562 cells, HUVEC cells or COLO cells

製品の特性

製品の状態	Liquid
保存方法	Shipped at 4°C. Upon delivery aliquot and store at -20°C. Avoid freeze / thaw cycles.
バッファー	Preservative: 0.02% Sodium Azide Constituents: 50% Glycerol, PBS, 150mM Sodium chloride, pH 7.4
精製度	Immunogen affinity purified
ポリ/モノ	ポリクローナル
アイソタイプ	IgG

アプリケーション

Our [Abpromise guarantee](#) covers the use of **ab74677** in the following tested applications.

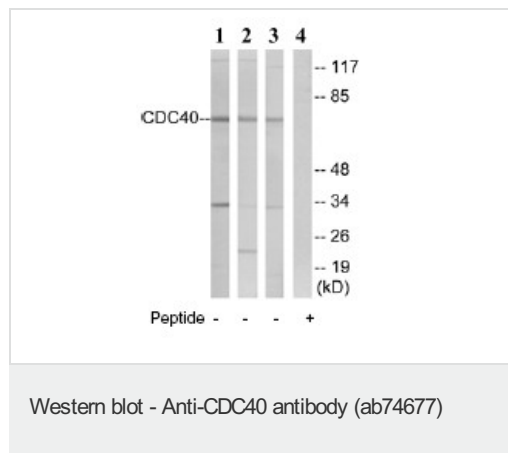
The application notes include recommended starting dilutions; optimal dilutions/concentrations should be determined by the end user.

アプリケーション	Abreviews	特記事項
WB		1/500 - 1/1000. Predicted molecular weight: 65 kDa.
ELISA		1/40000.

ターゲット情報

機能	Associates with the spliceosome late in the splicing pathway and may function in the second step of pre-mRNA splicing.
配列類似性	Contains 7 WD repeats.
細胞内局在	Nucleus.

画像



All lanes : Anti-CDC40 antibody (ab74677)
at 1/500 dilution

Lane 1 : extracts from K562 cells

Lane 2 : extracts from HUVEC
cells

Lane 3 : extracts from COLO cells

Lane 4 : extracts from K562 cells with
immunizing peptide at 10 µg

Lysates/proteins at 30 µg per lane.

Predicted band size: 65 kDa

Observed band size: 65 kDa

Additional bands at: 22 kDa, 34 kDa. We
are unsure as to the identity of these extra
bands.

Please note: All products are "FOR RESEARCH USE ONLY AND ARE NOT INTENDED FOR DIAGNOSTIC OR THERAPEUTIC USE"

Our Abpromise to you: Quality guaranteed and expert technical support

- Replacement or refund for products not performing as stated on the datasheet
- Valid for 12 months from date of delivery
- Response to your inquiry within 24 hours
- We provide support in Chinese, English, French, German, Japanese and Spanish
- Extensive multi-media technical resources to help you
- We investigate all quality concerns to ensure our products perform to the highest standards

If the product does not perform as described on this datasheet, we will offer a refund or replacement. For full details of the Abpromise, please visit <https://www.abcam.co.jp/abpromise> or contact our technical team.

Terms and conditions

- Guarantee only valid for products bought direct from Abcam or one of our authorized distributors