


Product datasheet

Anti-AATF antibody ab72148

画像数 2

製品の概要

製品名	Anti-AATF antibody
製品の詳細	Rabbit polyclonal to AATF
由来種	Rabbit
アプリケーション	適用あり: WB, IP
種交差性	交差種: Human 交差が予測される動物種: Chimpanzee, Gorilla, Orangutan 
免疫原	Synthetic peptide corresponding to a region between residues 125 and 175 of human AATF (NP_036270.1).
ポジティブ・コントロール	HeLa whole cell lysate.

製品の特性

製品の状態	Liquid
保存方法	Shipped at 4°C. Upon delivery aliquot and store at -20°C. Avoid freeze / thaw cycles.
バッファー	Preservative: 0.09% Sodium Azide Constituents: 0.1% BSA, Tris buffered saline
精製度	Immunogen affinity purified
ポリ/モノ	ポリクローナル
アイソタイプ	IgG

アプリケーション

Our [Abpromise guarantee](#) covers the use of **ab72148** in the following tested applications.

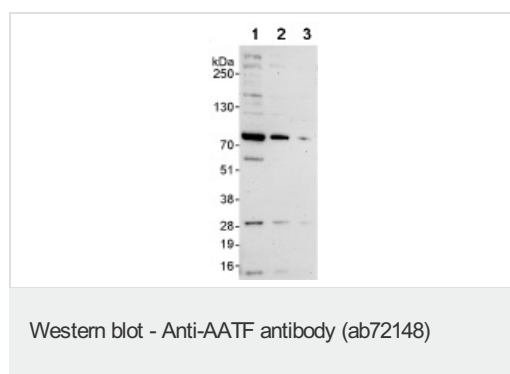
The application notes include recommended starting dilutions; optimal dilutions/concentrations should be determined by the end user.

アプリケーション	Abreviews	特記事項
WB		1/2000 - 1/10000. Detects a band of approximately 80 kDa (predicted molecular weight: 62 kDa).
IP		Use at 2-5 µg/mg of lysate.

ターゲット情報

機能	May function as a general inhibitor of the histone deacetylase HDAC1. Binding to the pocket region of RB1 may displace HDAC1 from RB1/E2F complexes, leading to activation of E2F target genes and cell cycle progression. Conversely, displacement of HDAC1 from SP1 bound to the CDKN1A promoter leads to increased expression of this CDK inhibitor and blocks cell cycle progression. Also antagonizes PAWR mediated induction of aberrant amyloid peptide production in Alzheimer disease (presenile and senile dementia), although the molecular basis for this phenomenon has not been described to date.
組織特異性	Ubiquitously expressed. Expressed at high levels in brain, heart, kidney, placenta and thymus.
配列類似性	Belongs to the AATF family.
翻訳後修飾	Hyperphosphorylated during the G1/S phase transition.
細胞内局在	Nucleus > nucleolus.

画像



All lanes : Anti-AATF antibody (ab72148) at 0.04 µg/ml

Lane 1 : HeLa whole cell lysate at 50 µg

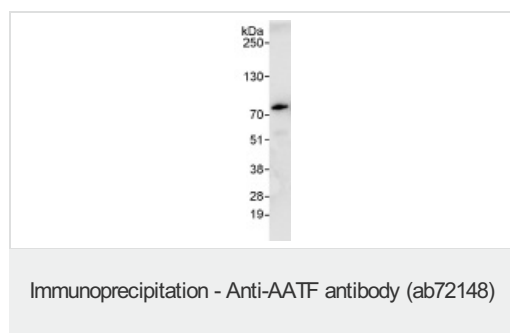
Lane 2 : HeLa whole cell lysate at 15 µg

Lane 3 : HeLa whole cell lysate at 5 µg

Predicted band size: 62 kDa

Observed band size: 80 kDa

There are multiple additional bands. We are unsure as to the identity of these extra bands.



Detection of Human AATF by Immunoprecipitation in Whole cell lysate from HeLa cells (1 mg for IP, 20% of IP loaded), using ab72148 at 3 µg/mg lysate for IP and at 1 µg/ml for subsequent Western blot detection.

Please note: All products are "FOR RESEARCH USE ONLY AND ARE NOT INTENDED FOR DIAGNOSTIC OR THERAPEUTIC USE"

Our Abpromise to you: Quality guaranteed and expert technical support

- Replacement or refund for products not performing as stated on the datasheet
- Valid for 12 months from date of delivery
- Response to your inquiry within 24 hours

- We provide support in Chinese, English, French, German, Japanese and Spanish
- Extensive multi-media technical resources to help you
- We investigate all quality concerns to ensure our products perform to the highest standards

If the product does not perform as described on this datasheet, we will offer a refund or replacement. For full details of the Abpromise, please visit <https://www.abcam.co.jp/abpromise> or contact our technical team.

Terms and conditions

- Guarantee only valid for products bought direct from Abcam or one of our authorized distributors