

## Product datasheet

# Anti-PI 3 Kinase catalytic subunit gamma antibody ab70903

### 画像数 2

#### 製品の概要

製品名	Anti-PI 3 Kinase catalytic subunit gamma antibody
製品の詳細	Rabbit polyclonal to PI 3 Kinase catalytic subunit gamma
由来種	Rabbit
アプリケーション	<b>適用あり:</b> WB, ELISA, IHC-P
種交差性	<b>交差種:</b> Human
免疫原	Synthetic peptide corresponding to Human PI 3 Kinase catalytic subunit gamma conjugated to keyhole limpet haemocyanin.
ポジティブ・コントロール	Skeletal muscle tissue, 293 cell lysates transiently transfected with the PI 3 Kinase catalytic subunit (PI3KCG) gene.

#### 製品の特性

製品の状態	Liquid
保存方法	Shipped at 4°C. Upon delivery aliquot and store at -20°C or -80°C. Avoid repeated freeze / thaw cycles.
バッファー	Preservative: 0.09% Sodium Azide Constituents: PBS
精製度	Protein A purified
特記事項 (精製)	This antibody is purified through a protein A column, eluted with high and low pH buffers and neutralized immediately, followed by dialysis against PBS.
ポリ/モノ	ポリクローナル
アイソタイプ	IgG

#### アプリケーション

Our [Abpromise guarantee](#) covers the use of **ab70903** in the following tested applications.

The application notes include recommended starting dilutions; optimal dilutions/concentrations should be determined by the end user.

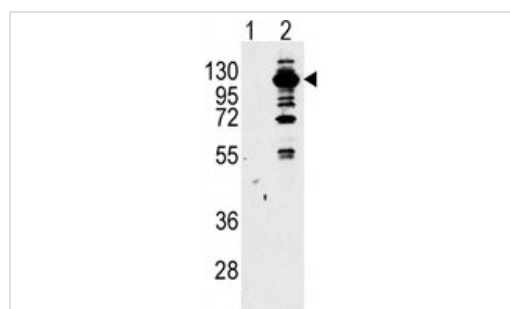
アプリケーション	Abreviews	特記事項
WB		1/100 - 1/500. Detects a band of approximately 126 kDa (predicted molecular weight: 126 kDa).

アプリケーション	Abreviews	特記事項
ELISA		1/1000.
IHC-P		1/10 - 1/50.

## ターゲット情報

<b>機能</b>	3-phosphorylates the cellular phosphoinositide PtdIns-4,5-biphosphate (PtdIns(4,5)P <sub>2</sub> ) to produce PtdIns-3, 4,5-triiphosphate (PtdIns(3,4,5)P <sub>3</sub> ). Links G-protein coupled receptor activation to the secondary messenger PtdIns(3,4,5)P <sub>3</sub> production.
<b>組織特異性</b>	Pancreas, skeletal muscle, liver and heart.
<b>パスウェイ</b>	Phospholipid metabolism; phosphatidylinositol phosphate biosynthesis.
<b>配列類似性</b>	Belongs to the PI3/PI4-kinase family. Contains 1 PI3K/PI4K domain.

## 画像



Western blot - Anti-PI 3 Kinase catalytic subunit gamma antibody (ab70903)

**All lanes :** Anti-PI 3 Kinase catalytic subunit gamma antibody (ab70903) at 1/100 dilution

**Lane 1 :** Non transfected 293 cell lysate

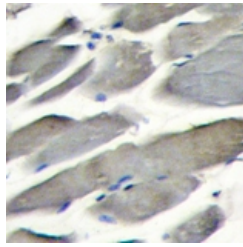
**Lane 2 :** PI 3 Kinase catalytic subunit transfected 293 cell lysate

Lysates/proteins at 2 µg per lane.

**Predicted band size:** 126 kDa

**Observed band size:** 126 kDa

**Additional bands at:** 140 kDa, 55 kDa, 72 kDa, 90 kDa, 95 kDa. We are unsure as to the identity of these extra bands.



Formalin-fixed and paraffin-embedded skeletal muscle tissue labelled with ab70903 at 1/10 dilution followed by peroxidase conjugated secondary antibody step and DAB staining.

Immunohistochemistry (Formalin/PFA-fixed paraffin-embedded sections) - Anti-PI 3 Kinase catalytic subunit gamma antibody (ab70903)

**Please note:** All products are "FOR RESEARCH USE ONLY AND ARE NOT INTENDED FOR DIAGNOSTIC OR THERAPEUTIC USE"

### Our Abpromise to you: Quality guaranteed and expert technical support

---

- Replacement or refund for products not performing as stated on the datasheet
- Valid for 12 months from date of delivery
- Response to your inquiry within 24 hours
- We provide support in Chinese, English, French, German, Japanese and Spanish
- Extensive multi-media technical resources to help you
- We investigate all quality concerns to ensure our products perform to the highest standards

If the product does not perform as described on this datasheet, we will offer a refund or replacement. For full details of the Abpromise, please visit <https://www.abcam.co.jp/abpromise> or contact our technical team.

### Terms and conditions

---

- Guarantee only valid for products bought direct from Abcam or one of our authorized distributors