

Product datasheet

Anti-SPON2 antibody ab70508

1 References [画像数 1](#)

製品の概要

| | |
|--------------|---|
| 製品名 | Anti-SPON2 antibody |
| 製品の詳細 | Mouse polyclonal to SPON2 |
| 由来種 | Mouse |
| アプリケーション | 適用あり: WB |
| 種交差性 | 交差種: Human |
| 免疫原 | Full length protein, Human SPON2. (AAH02707.1). |
| ポジティブ・コントロール | SPON2 transfected 293T cell lysate |

製品の特性

| | |
|--------|---|
| 製品の状態 | Liquid |
| 保存方法 | Shipped at 4°C. Upon delivery aliquot and store at -20°C or -80°C. Avoid repeated freeze / thaw cycles. |
| バッファー | Preservative: None Constituents: 1X PBS, pH 7.2 |
| 精製度 | Protein G purified |
| ポリ/モノ | ポリクローナル |
| アイソタイプ | IgG |

アプリケーション

Our [Abpromise guarantee](#) covers the use of **ab70508** in the following tested applications.

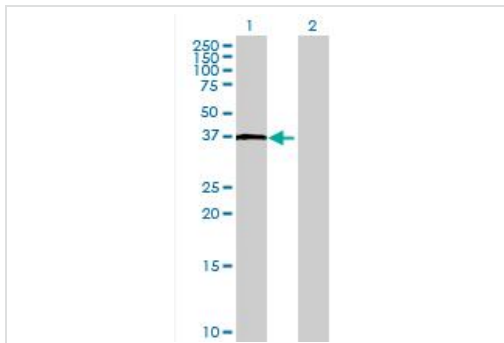
The application notes include recommended starting dilutions; optimal dilutions/concentrations should be determined by the end user.

| アプリケーション | Abreviews | 特記事項 |
|----------|-----------|--|
| WB | | 1/500 - 1/1000. Detects a band of approximately 37 kDa (predicted molecular weight: 36 kDa). |

ターゲット情報

| | |
|--------------|--|
| 機能 | Cell adhesion protein that promotes adhesion and outgrowth of hippocampal embryonic neurons. Binds directly to bacteria and their components and functions as an opsonin for macrophage phagocytosis of bacteria. Essential in the initiation of the innate immune response and represents a unique pattern-recognition molecule in the ECM for microbial pathogens (By similarity). Binds bacterial lipopolysaccharide (LPS). |
| 組織特異性 | Expressed in normal lung tissue but not in lung carcinoma cell lines. |
| 配列類似性 | Contains 1 spondin domain. Contains 1 TSP type-1 domain. |
| 細胞内局在 | Secreted > extracellular space > extracellular matrix. |

画像



Western blot - Anti-SPON2 antibody (ab70508)

All lanes : Anti-SPON2 antibody (ab70508)
at 1/500 dilution

Lane 1 : SPON2 transfected 293T cell lysate

Lane 2 : Non transfected 293T cell lysate

Lysates/proteins at 25 µg per lane.

Secondary

All lanes : Goat Anti-Mouse IgG (H&L)-HRP
Conjugate at 1/2500 dilution

Predicted band size: 36 kDa

Observed band size: 37 kDa

Please note: All products are "FOR RESEARCH USE ONLY AND ARE NOT INTENDED FOR DIAGNOSTIC OR THERAPEUTIC USE"

Our Abpromise to you: Quality guaranteed and expert technical support

- Replacement or refund for products not performing as stated on the datasheet
- Valid for 12 months from date of delivery
- Response to your inquiry within 24 hours
- We provide support in Chinese, English, French, German, Japanese and Spanish
- Extensive multi-media technical resources to help you
- We investigate all quality concerns to ensure our products perform to the highest standards

If the product does not perform as described on this datasheet, we will offer a refund or replacement. For full details of the Abpromise, please visit <https://www.abcam.co.jp/abpromise> or contact our technical team.

Terms and conditions

- Guarantee only valid for products bought direct from Abcam or one of our authorized distributors