

## Product datasheet

# Anti-AP1M2 antibody ab70143

### 画像数 1

#### 製品の概要

製品名	Anti-AP1M2 antibody
製品の詳細	Mouse polyclonal to AP1M2
由来種	Mouse
アプリケーション	適用あり: WB
種交差性	交差種: Human
免疫原	AP1M2 (NP_005489, 423 a.a), full-length human protein.
ポジティブ・コントロール	AP1M2 transfected 293T cell lysate

#### 製品の特性

製品の状態	Liquid
保存方法	Shipped at 4°C. Upon delivery aliquot and store at -20°C or -80°C. Avoid repeated freeze / thaw cycles.
バッファー	Preservative: None Constituents: 1X PBS, pH 7.2
精製度	Protein G purified
ポリ/モノ	ポリクローナル
アイソタイプ	IgG

#### アプリケーション

Our [Abpromise guarantee](#) covers the use of **ab70143** in the following tested applications.

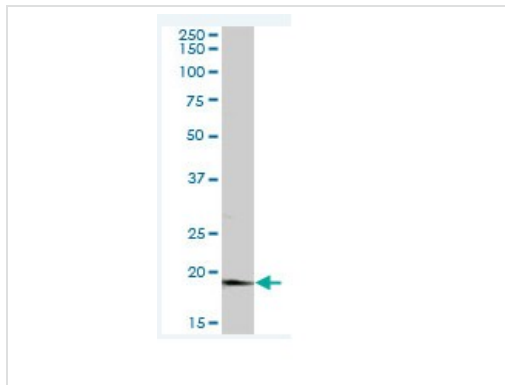
The application notes include recommended starting dilutions; optimal dilutions/concentrations should be determined by the end user.

アプリケーション	Abreviews	特記事項
WB		1/500 - 1/1000. Detects a band of approximately 48 kDa (predicted molecular weight: 48 kDa).

#### ターゲット情報

<b>機能</b>	Subunit of clathrin-associated adaptor protein complex 1 that plays a role in protein sorting in the trans-Golgi network (TGN) and endosomes. The AP complexes mediate the recruitment of clathrin to membranes and the recognition of sorting signals within the cytosolic tails of transmembrane cargo molecules.
<b>配列類似性</b>	Belongs to the adaptor complexes medium subunit family. Contains 1 MHD (mu homology) domain.
<b>翻訳後修飾</b>	Phosphorylation of membrane-bound AP1M1/AP1M2 increases its affinity for sorting signals.
<b>細胞内局在</b>	Golgi apparatus. Cytoplasmic vesicle > clathrin-coated vesicle membrane. Component of the coat surrounding the cytoplasmic face of coated vesicles located at the Golgi complex.

## 画像



Western blot - Anti-AP1M2 antibody (ab70143)

**All lanes :** Anti-AP1M2 antibody (ab70143) at 1/500 dilution

**Lane 1 :** AP1M2 transfected 293T cell lysate

**Lane 2 :** non transfected 293T cell lysate

Lysates/proteins at 25 µg per lane.

### Secondary

**All lanes :** Goat Anti-Mouse IgG (H&L)-HRP Conjugate at 1/2500 dilution

**Predicted band size:** 48 kDa

**Observed band size:** 48 kDa

**Please note:** All products are "FOR RESEARCH USE ONLY AND ARE NOT INTENDED FOR DIAGNOSTIC OR THERAPEUTIC USE"

## Our Abpromise to you: Quality guaranteed and expert technical support

- Replacement or refund for products not performing as stated on the datasheet
- Valid for 12 months from date of delivery
- Response to your inquiry within 24 hours
- We provide support in Chinese, English, French, German, Japanese and Spanish
- Extensive multi-media technical resources to help you
- We investigate all quality concerns to ensure our products perform to the highest standards

If the product does not perform as described on this datasheet, we will offer a refund or replacement. For full details of the Abpromise, please visit <https://www.abcam.co.jp/abpromise> or contact our technical team.

## Terms and conditions

- Guarantee only valid for products bought direct from Abcam or one of our authorized distributors