


Product datasheet

Anti-Calreticulin antibody ab70013

画像数 2

製品の概要

製品名	Anti-Calreticulin antibody
製品の詳細	Rabbit polyclonal to Calreticulin
由来種	Rabbit
アプリケーション	適用あり: WB, ELISA, IHC-P, ICC/IF
種交差性	交差種: Human 交差が予測される動物種: Mouse, Rat 
免疫原	synthesized peptide derived from an internal region of human Calreticulin
ポジティブ・コントロール	Extracts from COS7 cells. Heart tissue.

製品の特性

製品の状態	Liquid
保存方法	Shipped at 4°C. Upon delivery aliquot and store at -20°C. Avoid freeze / thaw cycles.
バッファー	Preservative: 0.02% Sodium Azide Constituents: 50% Glycerol, PBS, 150mM Sodium chloride, pH 7.4
精製度	Immunogen affinity purified
ポリ/モノ	ポリクローナル
アイソタイプ	IgG

アプリケーション

Our [Abpromise guarantee](#) covers the use of **ab70013** in the following tested applications.

The application notes include recommended starting dilutions; optimal dilutions/concentrations should be determined by the end user.

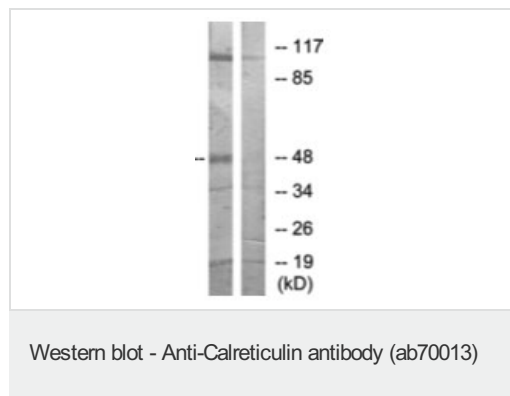
アプリケーション	Abreviews	特記事項
WB		1/500 - 1/1000. Detects a band of approximately 48 kDa (predicted molecular weight: 48 kDa).
ELISA		1/40000.
IHC-P		1/50 - 1/100.

アプリケーション	Abreviews	特記事項
ICC/IF		1/500 - 1/1000.

ターゲット情報

機能	Molecular calcium-binding chaperone promoting folding, oligomeric assembly and quality control in the ER via the calreticulin/calnexin cycle. This lectin interacts transiently with almost all of the monoglucosylated glycoproteins that are synthesized in the ER. Interacts with the DNA-binding domain of NR3C1 and mediates its nuclear export.
配列類似性	Belongs to the calreticulin family.
ドメイン	Can be divided into a N-terminal globular domain, a proline-rich P-domain forming an elongated arm-like structure and a C-terminal acidic domain. The P-domain binds one molecule of calcium with high affinity, whereas the acidic C-domain binds multiple calcium ions with low affinity. The interaction with glycans occurs through a binding site in the globular lectin domain. The zinc binding sites are localized to the N-domain. Associates with PDIA3 through the tip of the extended arm formed by the P-domain.
細胞内局在	Endoplasmic reticulum lumen. Cytoplasm > cytosol. Secreted > extracellular space > extracellular matrix. Cell surface. Also found in cell surface (T cells), cytosol and extracellular matrix. Associated with the lytic granules in the cytolytic T-lymphocytes.

画像



All lanes : Anti-Calreticulin antibody (ab70013) at 1/500 dilution

Lane 1 : extracts from COS7 cells

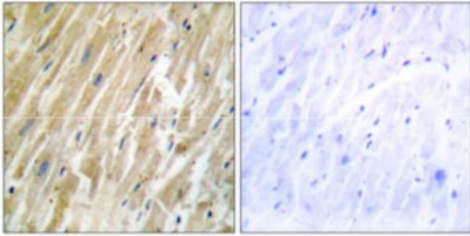
Lane 2 : extracts from COS7 cells with immunizing peptide at 10 µg

Lysates/proteins at 30 µg per lane.

Predicted band size: 48 kDa

Observed band size: 48 kDa

Additional bands at: 110 kDa, 19 kDa, 35 kDa. We are unsure as to the identity of these extra bands.



Peptide

-

+

Immunohistochemistry (Formalin/PFA-fixed paraffin-embedded sections) - Anti-Calreticulin antibody (ab70013)

immunohistochemistry analysis of paraffin-embedded human heart tissue using 1/50 ab70013. Right: with pretreatment of the antibody with the immunizing peptide

Please note: All products are "FOR RESEARCH USE ONLY AND ARE NOT INTENDED FOR DIAGNOSTIC OR THERAPEUTIC USE"

Our Abpromise to you: Quality guaranteed and expert technical support

- Replacement or refund for products not performing as stated on the datasheet
- Valid for 12 months from date of delivery
- Response to your inquiry within 24 hours
- We provide support in Chinese, English, French, German, Japanese and Spanish
- Extensive multi-media technical resources to help you
- We investigate all quality concerns to ensure our products perform to the highest standards

If the product does not perform as described on this datasheet, we will offer a refund or replacement. For full details of the Abpromise, please visit <https://www.abcam.co.jp/abpromise> or contact our technical team.

Terms and conditions

- Guarantee only valid for products bought direct from Abcam or one of our authorized distributors