

## Product datasheet

# Anti-Phosphorylase B antibody ab69586

### 画像数 1

#### 製品の概要

製品名	Anti-Phosphorylase B antibody
製品の詳細	Rabbit polyclonal to Phosphorylase B
由来種	Rabbit
特異性	Detects endogenous levels of Phosphorylase B protein.
アプリケーション	<b>適用あり:</b> WB, ELISA
種交差性	<b>交差種:</b> Human <b>交差が予測される動物種:</b> Mouse
免疫原	Synthesized peptide derived from internal of human Phosphorylase B
ポジティブ・コントロール	Extracts from K562 cells

#### 製品の特性

製品の状態	Liquid
保存方法	Shipped at 4°C. Store at -20°C. Stable for 12 months at -20°C.
バッファー	Preservative: 0.02% Sodium Azide Constituents: 50% Glycerol, PBS, 150mM Sodium chloride, pH 7.4
精製度	Immunogen affinity purified
ポリ/モノ	ポリクローナル
アイソタイプ	IgG

#### アプリケーション

Our [Abpromise guarantee](#) covers the use of **ab69586** in the following tested applications.

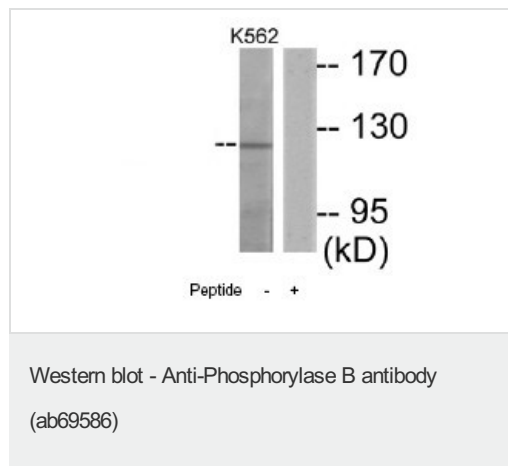
The application notes include recommended starting dilutions; optimal dilutions/concentrations should be determined by the end user.

アプリケーション	Abreviews	特記事項
WB		1/500 - 1/1000. Detects a band of approximately 121 kDa (predicted molecular weight: 121 kDa).
ELISA		1/40000.

## ターゲット情報

機能	Phosphorylase b kinase catalyzes the phosphorylation of serine in certain substrates, including troponin I. The beta chain acts as a regulatory unit and modulates the activity of the holoenzyme in response to phosphorylation.
パスウェイ	Glycan biosynthesis; glycogen metabolism.
関連疾患	Glycogen storage disease 9B
配列類似性	Belongs to the phosphorylase b kinase regulatory chain family.
翻訳後修飾	Ser-701 is probably phosphorylated by PKA. Although the final Cys may be farnesylated, the terminal tripeptide is probably not removed, and the C-terminus is not methylated.
細胞内局在	Cell membrane.

## 画像



**All lanes :** Anti-Phosphorylase B antibody (ab69586) at 1/500 dilution

**Lane 1 :** extracts from K562 cells, without immunising peptide

**Lane 2 :** extracts from K562 cells, with immunising peptide

Lysates/proteins at 30 µg per lane.

**Predicted band size:** 121 kDa

**Observed band size:** 121 kDa

**Please note:** All products are "FOR RESEARCH USE ONLY AND ARE NOT INTENDED FOR DIAGNOSTIC OR THERAPEUTIC USE"

## Our Abpromise to you: Quality guaranteed and expert technical support

- Replacement or refund for products not performing as stated on the datasheet
- Valid for 12 months from date of delivery
- Response to your inquiry within 24 hours
- We provide support in Chinese, English, French, German, Japanese and Spanish
- Extensive multi-media technical resources to help you
- We investigate all quality concerns to ensure our products perform to the highest standards

If the product does not perform as described on this datasheet, we will offer a refund or replacement. For full details of the Abpromise, please visit <https://www.abcam.co.jp/abpromise> or contact our technical team.

## Terms and conditions

- Guarantee only valid for products bought direct from Abcam or one of our authorized distributors