

Product datasheet

# Anti-Cytochrome b5 Outer Mitochondrial Membrane antibody ab69184

画像数 2

## 製品の概要

製品名	Anti-Cytochrome b5 Outer Mitochondrial Membrane antibody
製品の詳細	Mouse polyclonal to Cytochrome b5 Outer Mitochondrial Membrane
由来種	Mouse
アプリケーション	適用あり: WB
種交差性	交差種: Human
免疫原	Full length Cytochrome b5 Outer Mitochondrial Membrane protein (Human) (AAH04373)
ポジティブ・コントロール	Cytochrome b5 Outer Mitochondrial Membrane transfected 293T cell lysate and human liver tissue lysate.

## 製品の特性

製品の状態	Liquid
保存方法	Shipped at 4°C. Upon delivery aliquot and store at -20°C or -80°C. Avoid repeated freeze / thaw cycles.
バッファー	Preservative: None Constituents: 1X PBS, pH 7.2
精製度	Protein G purified
ポリ/モノ	ポリクローナル
アイソタイプ	IgG

## アプリケーション

Our [Abpromise guarantee](#) covers the use of **ab69184** in the following tested applications.

The application notes include recommended starting dilutions; optimal dilutions/concentrations should be determined by the end user.

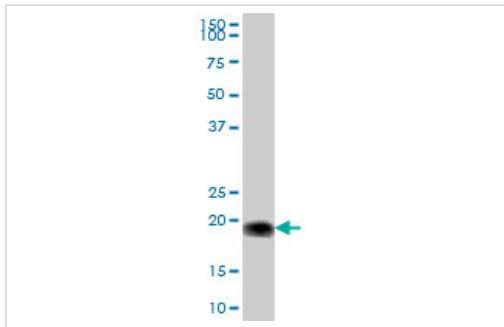
アプリケーション	Abreviews	特記事項
WB		1/500 - 1/1000. Detects a band of approximately 19 kDa (predicted molecular weight: 16 kDa).

## ターゲット情報

**関連性** Cytochrome b5 Outer Mitochondrial Membrane belongs to the cytochrome b5 family and contains one cytochrome b5 heme-binding domain. Cytochrome b5 is a membrane bound hemoprotein which function as an electron carrier for several membrane bound oxygenases.

**細胞内局在** Mitochondrion outer membrane

## 画像



Western blot - Anti-Cytochrome b5 Outer Mitochondrial Membrane antibody (ab69184)

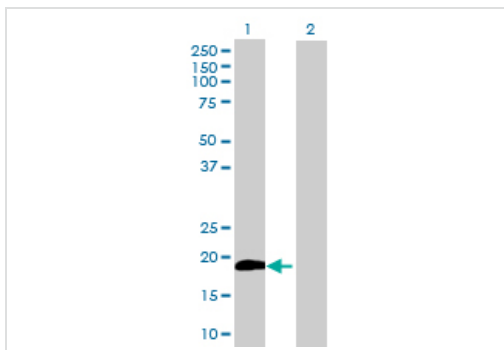
Anti-Cytochrome b5 Outer Mitochondrial Membrane antibody (ab69184) at 1/500 dilution + human liver tissue lysate at 25 µg

### Secondary

Goat Anti-Mouse IgG (H&L)-HRP Conjugate at 1/2500 dilution

**Predicted band size:** 16 kDa

**Observed band size:** 19 kDa



Western blot - Anti-Cytochrome b5 Outer Mitochondrial Membrane antibody (ab69184)

**All lanes :** Anti-Cytochrome b5 Outer Mitochondrial Membrane antibody (ab69184) at 1/500 dilution

**Lane 1 :** Cytochrome b5 Outer Mitochondrial Membrane transfected 293T cell lysate

**Lane 2 :** Non-transfected 293T cell lysate

Lysates/proteins at 25 µg per lane.

### Secondary

**All lanes :** Goat Anti-Mouse IgG (H&L)-HRP Conjugate at 1/2500 dilution

**Predicted band size:** 16 kDa

**Observed band size:** 19 kDa

**Please note:** All products are "FOR RESEARCH USE ONLY AND ARE NOT INTENDED FOR DIAGNOSTIC OR THERAPEUTIC USE"

**Our Abpromise to you: Quality guaranteed and expert technical support**

- Replacement or refund for products not performing as stated on the datasheet
- Valid for 12 months from date of delivery
- Response to your inquiry within 24 hours
  
- We provide support in Chinese, English, French, German, Japanese and Spanish
- Extensive multi-media technical resources to help you
- We investigate all quality concerns to ensure our products perform to the highest standards

If the product does not perform as described on this datasheet, we will offer a refund or replacement. For full details of the Abpromise, please visit <https://www.abcam.co.jp/abpromise> or contact our technical team.

### **Terms and conditions**

---

- Guarantee only valid for products bought direct from Abcam or one of our authorized distributors