

Product datasheet

Anti-CLEC-2 antibody ab67689

画像数 1

製品の概要

製品名	Anti-CLEC-2 antibody
製品の詳細	Mouse polyclonal to CLEC-2
由来種	Mouse
アプリケーション	適用あり: WB
種交差性	交差種: Human
免疫原	Full length protein, corresponding to amino acids 1--196 of human CLEC1B
ポジティブ・コントロール	CLEC1B transfected 293T cells

製品の特性

製品の状態	Liquid
保存方法	Shipped at 4°C. Upon delivery aliquot and store at -20°C or -80°C. Avoid repeated freeze / thaw cycles.
バッファー	Preservative: None Constituents: PBS, pH 7.2
精製度	Protein A purified
ポリ/モノ	ポリクローナル
アイソタイプ	IgG

アプリケーション

Our [Abpromise guarantee](#) covers the use of **ab67689** in the following tested applications.

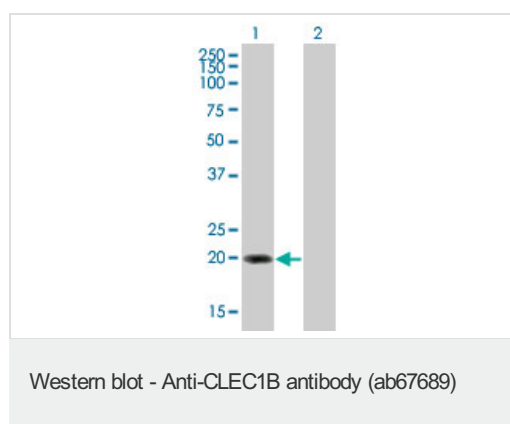
The application notes include recommended starting dilutions; optimal dilutions/concentrations should be determined by the end user.

アプリケーション	Abreviews	特記事項
WB		1/500 - 1/1000. Detects a band of approximately 20 kDa (predicted molecular weight: 27 kDa).

ターゲット情報

機能	Acts as a receptor for the platelet-aggregating snake venom protein rhodocytin. Rhodocytin binding leads to tyrosine phosphorylation and this promotes the binding of spleen tyrosine kinase (Syk) and initiation of downstream tyrosine phosphorylation events and activation of PLC-gamma-2. Acts as an attachment factor for human immunodeficiency virus type 1 (HIV-1) and facilitates its capture by platelets.
組織特異性	Expressed preferentially in the liver. Also expressed in immune cells of myeloid origin and on the surface of platelets.
配列類似性	Contains 1 C-type lectin domain.
翻訳後修飾	Glycosylated. Phosphorylated on tyrosine residue in response to rhodocytin binding.
細胞内局在	Membrane.

画像



All lanes : Anti-CLEC-2 antibody (ab67689) at 1/500 dilution

Lane 1 : CLEC1B transfected 293T cell lysate

Lane 2 : Non transfected lysate

Lysates/proteins at 25 µg per lane.

Secondary

All lanes : Goat Anti-Mouse IgG (H&L)-HRP Conjugate at 1/2500 dilution

Predicted band size: 27 kDa

Observed band size: 20 kDa

[why is the actual band size different from the predicted?](#)

Please note: All products are "FOR RESEARCH USE ONLY AND ARE NOT INTENDED FOR DIAGNOSTIC OR THERAPEUTIC USE"

Our Abpromise to you: Quality guaranteed and expert technical support

- Replacement or refund for products not performing as stated on the datasheet
- Valid for 12 months from date of delivery
- Response to your inquiry within 24 hours
- We provide support in Chinese, English, French, German, Japanese and Spanish
- Extensive multi-media technical resources to help you
- We investigate all quality concerns to ensure our products perform to the highest standards

If the product does not perform as described on this datasheet, we will offer a refund or replacement. For full details of the Abpromise, please visit <https://www.abcam.co.jp/abpromise> or contact our technical team.

Terms and conditions

- Guarantee only valid for products bought direct from Abcam or one of our authorized distributors