

Product datasheet

Anti-C1orf38 antibody ab67487

画像数 1

製品の概要

製品名	Anti-C1orf38 antibody
製品の詳細	Mouse polyclonal to C1orf38
由来種	Mouse
特異性	Antibody reactive against mammalian transfected lysate.
アプリケーション	適用あり: WB
種交差性	交差種: Human
免疫原	Full length protein, corresponding to amino acids 1-132 of Human C1orf38
ポジティブ・コントロール	Transfected 293T cell lysate

製品の特性

製品の状態	Liquid
保存方法	Shipped at 4°C. Upon delivery aliquot and store at -20°C or -80°C. Avoid repeated freeze / thaw cycles.
バッファー	Preservative: None Constituents: Whole serum
精製度	Whole antiserum
ポリ/モノ	ポリクローナル
アイソタイプ	IgG

アプリケーション

Our [Abpromise guarantee](#) covers the use of **ab67487** in the following tested applications.

The application notes include recommended starting dilutions; optimal dilutions/concentrations should be determined by the end user.

アプリケーション	Abreviews	特記事項
----------	-----------	------

WB

追加情報

WB: 1/500 - 1/1000. Detects a band of approximately 10 kDa (predicted molecular weight: 72 kDa).

Detection pair

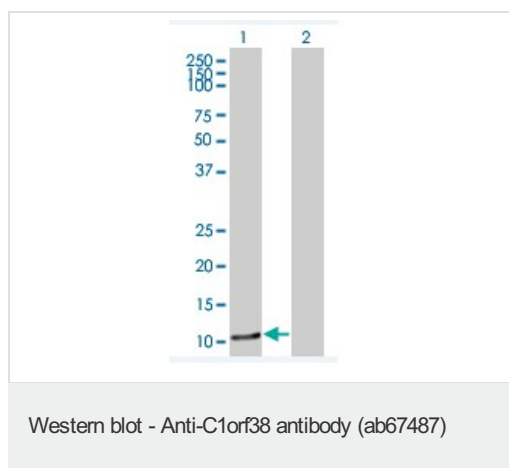
Not yet tested in other applications.

Optimal dilutions/concentrations should be determined by the end user.

ターゲット情報

機能	May constitute a control point in macrophage inflammatory response, promoting LPS-induced TNF production.
組織特異性	Expressed in different endometrial adenocarcinoma cell lines and various other cell lines apart from the prostate cell line LNCaP and the ovarian cancer cell line BG1.
配列類似性	Belongs to the themis family.
翻訳後修飾	Phosphorylation at Tyr-632 is induced by LPS.

画像



All lanes : Anti-C1orf38 antibody (ab67487)
at 1/500 dilution

Lane 1 : C1orf38 transfected 293T cell

Lane 2 : non transfected 293T cell

Lysates/proteins at 25 µg per lane.

Predicted band size: 72 kDa

Additional bands at: 10 kDa (possible isoform)

Please note: All products are "FOR RESEARCH USE ONLY AND ARE NOT INTENDED FOR DIAGNOSTIC OR THERAPEUTIC USE"

Our Abpromise to you: Quality guaranteed and expert technical support

- Replacement or refund for products not performing as stated on the datasheet
- Valid for 12 months from date of delivery
- Response to your inquiry within 24 hours
- We provide support in Chinese, English, French, German, Japanese and Spanish
- Extensive multi-media technical resources to help you
- We investigate all quality concerns to ensure our products perform to the highest standards

If the product does not perform as described on this datasheet, we will offer a refund or replacement. For full details of the Abpromise, please visit <https://www.abcam.co.jp/abpromise> or contact our technical team.

Terms and conditions

- Guarantee only valid for products bought direct from Abcam or one of our authorized distributors