

## Product datasheet

# Anti-VASH1 antibody ab67423

2 References [画像数 1](#)

### 製品の概要

|          |                                   |
|----------|-----------------------------------|
| 製品名      | Anti-VASH1 antibody               |
| 製品の詳細    | Mouse polyclonal to VASH1         |
| 由来種      | Mouse                             |
| アプリケーション | <b>適用あり:</b> IHC-P, WB            |
| 種交差性     | <b>交差種:</b> Human                 |
| 免疫原      | Full length VASH1 protein (Human) |

### 製品の特性

|        |   |
|--------|---|
| 製品の状態  | Liquid  |
| 保存方法   | Shipped at 4°C. Upon delivery aliquot and store at -20°C or -80°C. Avoid repeated freeze / thaw cycles. |
| バッファー  | Preservative: None<br>Constituents: 1X PBS, pH 7.2  |
| 精製度    | Protein A purified  |
| ポリ/モノ  | ポリクローナル   |
| アイソタイプ | IgG   |

### アプリケーション

Our [Abpromise guarantee](#) covers the use of **ab67423** in the following tested applications.

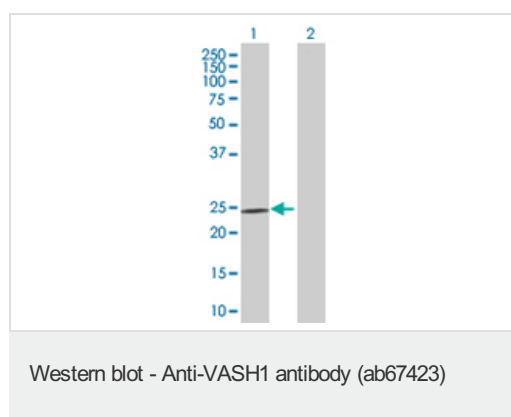
The application notes include recommended starting dilutions; optimal dilutions/concentrations should be determined by the end user.

| アプリケーション | Abreviews | 特記事項   |
|----------|-----------|--|
| IHC-P    |           | Use at an assay dependent dilution. PubMed: 20708159   |
| WB       |           | 1/500 - 1/1000. Detects a band of approximately 24 kDa (predicted molecular weight: 22 kDa). |

### ターゲット情報

|              |   |
|--------------|---|
| <b>機能</b>    | Angiogenesis inhibitor. Inhibits migration, proliferation and network formation by endothelial cells as well as angiogenesis. This inhibitory effect is selective to endothelial cells as it does not affect the migration of smooth muscle cells or fibroblasts. Does not affect the proliferation of cancer cells in vitro, but inhibits tumor growth and tumor angiogenesis. Acts in an autocrine manner. Inhibits artery neointimal formation and macrophage infiltration. Exhibits heparin-binding activity. |
| <b>組織特異性</b> | Preferentially expressed in endothelial cells. Highly expressed in fetal organs. Expressed in brain and placenta, and at lower level in heart and kidney. Highly detected in microvessels endothelial cells of atherosclerotic lesions.   |
| <b>配列類似性</b> | Belongs to the vasohibin family.  |
| <b>翻訳後修飾</b> | 2 major forms (42 and 36 kDa) and 2 minors (32 and 27 kDa) may be processed by proteolytic cleavage. The largest form (42 kDa) seems to be secreted and the other major form (63 kDa) seems to accumulate within the cells or pericellular milieu. Polypeptide consisting of Met-77 to Arg-318 may correspond to the 27 kDa form and that consisting of Met-77 to Val-365 may correspond to the 36 kDa form.  |
| <b>細胞内局在</b> | Secreted.   |

## 画像



**All lanes :** Anti-VASH1 antibody (ab67423) at 1/500 dilution

**Lane 1 :** VASH1 transfected 293T cell lysate

**Lane 2 :** Non-transfected 293T cell lysate

Lysates/proteins at 25 µg/ml per lane.

### Secondary

**All lanes :** Goat Anti-Mouse IgG (H&L)-HRP Conjugate at 1/2500 dilution

**Predicted band size:** 22 kDa

**Observed band size:** 24 kDa

**Please note:** All products are "FOR RESEARCH USE ONLY AND ARE NOT INTENDED FOR DIAGNOSTIC OR THERAPEUTIC USE"

## Our Promise to you: Quality guaranteed and expert technical support

- Replacement or refund for products not performing as stated on the datasheet
- Valid for 12 months from date of delivery
- Response to your inquiry within 24 hours
- We provide support in Chinese, English, French, German, Japanese and Spanish
- Extensive multi-media technical resources to help you
- We investigate all quality concerns to ensure our products perform to the highest standards

If the product does not perform as described on this datasheet, we will offer a refund or replacement. For full details of the Abpromise, please visit <https://www.abcam.co.jp/abpromise> or contact our technical team.

## Terms and conditions

---

- Guarantee only valid for products bought direct from Abcam or one of our authorized distributors