

## Product datasheet

# Anti-Rab20 antibody ab67213

### 画像数 1

#### 製品の概要

製品名	Anti-Rab20 antibody
製品の詳細	Mouse polyclonal to Rab20
由来種	Mouse
アプリケーション	適用あり: WB
種交差性	交差種: Human
免疫原	Full length Rab20 protein (Human)
ポジティブ・コントロール	Rab20 transfected 293T cell lysate

#### 製品の特性

製品の状態	Liquid
保存方法	Shipped at 4°C. Store at +4°C short term (1-2 weeks). Upon delivery aliquot. Store at -20°C or -80°C. Avoid freeze / thaw cycle.
バッファー	Preservative: None Constituents: 1X PBS, pH 7.2
精製度	Protein A purified
ポリ/モノ	ポリクローナル
アイソタイプ	IgG

#### アプリケーション

Our [Abpromise guarantee](#) covers the use of **ab67213** in the following tested applications.

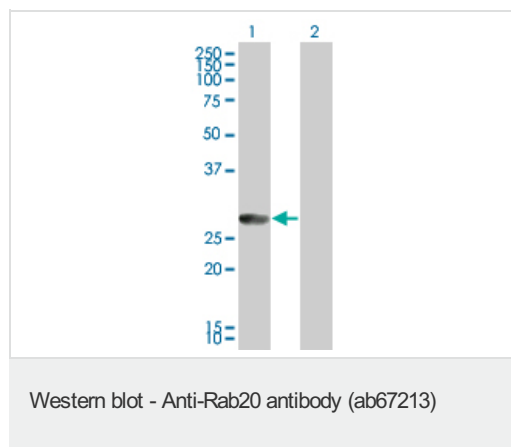
The application notes include recommended starting dilutions; optimal dilutions/concentrations should be determined by the end user.

アプリケーション	Abreviews	特記事項
WB		1/500 - 1/1000. Detects a band of approximately 26 kDa (predicted molecular weight: 26 kDa).

#### ターゲット情報

<b>機能</b>	Plays a role in apical endocytosis/recycling. Plays a role in the maturation and acidification of phagosomes that engulf pathogens, such as <i>S.aureus</i> and <i>M.tuberculosis</i> . Plays a role in the fusion of phagosomes with lysosomes.
<b>組織特異性</b>	Low or absent expression in normal pancreas and stronger expression in 15 of 18 exocrine pancreatic adenocarcinomas (at protein level).
<b>配列類似性</b>	Belongs to the small GTPase superfamily. Rab family.
<b>細胞内局在</b>	Golgi apparatus. Cytoplasmic vesicle, phagosome. Cytoplasmic vesicle, phagosome membrane. Highly enriched on apical endocytic structures in polarized epithelial cells of kidney proximal tubules (By similarity). Recruited to phagosomes containing <i>S.aureus</i> or <i>M.tuberculosis</i> (PubMed:21255211).

## 画像



**All lanes :** Anti-Rab20 antibody (ab67213) at 1/500 dilution

**Lane 1 :** Rab20 transfected 293T cell lysate

**Lane 2 :** Non transfected 293T cell lysate

Lysates/proteins at 25 µg per lane.

### Secondary

**All lanes :** Goat Anti-Mouse IgG (H&L)-HRP Conjugate at 1/2500 dilution

**Predicted band size:** 26 kDa

**Observed band size:** 26 kDa

**Please note:** All products are "FOR RESEARCH USE ONLY AND ARE NOT INTENDED FOR DIAGNOSTIC OR THERAPEUTIC USE"

## Our Abpromise to you: Quality guaranteed and expert technical support

- Replacement or refund for products not performing as stated on the datasheet
- Valid for 12 months from date of delivery
- Response to your inquiry within 24 hours
- We provide support in Chinese, English, French, German, Japanese and Spanish
- Extensive multi-media technical resources to help you
- We investigate all quality concerns to ensure our products perform to the highest standards

If the product does not perform as described on this datasheet, we will offer a refund or replacement. For full details of the Abpromise, please visit <https://www.abcam.co.jp/abpromise> or contact our technical team.

## Terms and conditions

- Guarantee only valid for products bought direct from Abcam or one of our authorized distributors