


## Product datasheet

# Anti-LSM2 antibody ab66749

画像数 3

### 製品の概要

製品名	Anti-LSM2 antibody
製品の詳細	Rabbit polyclonal to LSM2
由来種	Rabbit
アプリケーション	適用あり: WB, IHC-P
種交差性	交差種: Human 交差が予測される動物種: Mouse, Rat, Rabbit, Goat, Horse, Guinea pig, Cow, Cat, Dog, Pig, Zebrafish 
免疫原	Synthetic peptide: PEKYPHMLSV KNCFIRGSVV RYVQLPADEV DTQLLQDAAR KEALQQKQ, corresponding to amino acids 48-95 of Human LSM2 <a href="#">Run BLAST with ExPASy</a> <a href="#">Run BLAST with NCBI</a>
ポジティブ・コントロール	HepG2 cell lysate, human kidney and heart tissue.

### 製品の特性

製品の状態	Liquid
保存方法	Shipped at 4°C. Upon delivery aliquot and store at -20°C. Avoid freeze / thaw cycles.
バッファー	Preservative: None Constituents: 2% Sucrose, PBS
精製度	Protein A purified
ポリ/モノ	ポリクローナル
アイソタイプ	IgG

### アプリケーション

Our [Abpromise guarantee](#) covers the use of **ab66749** in the following tested applications.

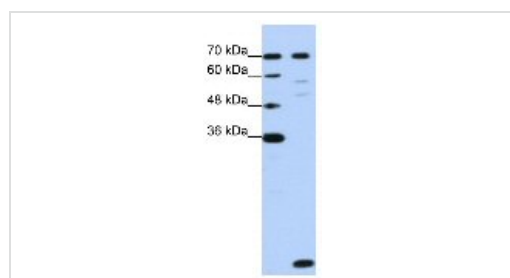
The application notes include recommended starting dilutions; optimal dilutions/concentrations should be determined by the end user.

アプリ ケーション	Abreviews	特記事項
WB		Use a concentration of 1.25 µg/ml. Detects a band of approximately <36, 70 kDa (predicted molecular weight: 11 kDa). Good results were obtained when blocked with 5% non-fat dry milk in 0.05% PBS-T.
IHC-P		Use a concentration of 4 - 8 µg/ml.

## ターゲット情報

機能	Binds specifically to the 3'-terminal U-tract of U6 snRNA. May be involved in pre-mRNA splicing.
配列類似性	Belongs to the snRNP Sm proteins family.
翻訳後修飾	Phosphorylated upon DNA damage, probably by ATM or ATR.
細胞内局在	Nucleus.

## 画像



Western blot - Anti-LSM2 antibody (ab66749)

Anti-LSM2 antibody (ab66749) at 1.25 µg/ml  
+ HepG2 cell lysate

### Secondary

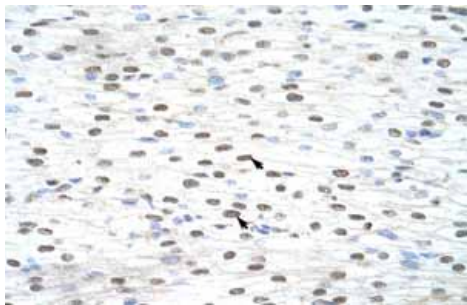
HRP-conjugated anti-rabbit IgG at 1/50000  
dilution

**Predicted band size:** 11 kDa

**Observed band size:** <36 kDa

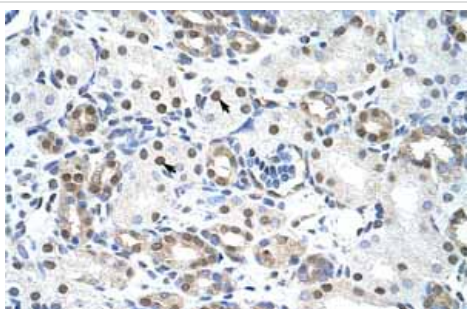
**Additional bands at:** 53 kDa, 58 kDa, 70 kDa. We are unsure as to the identity of these extra bands.

Gel concentration 12%



Immunohistochemistry (Formalin/PFA-fixed paraffin-embedded sections) analysis of human heart tissue labelling LSM2 with ab66749 at 4-8µg/ml. Arrows indicate positively labelled myocardial cells. Magnification: 400X.

Immunohistochemistry (Formalin/PFA-fixed paraffin-embedded sections) - Anti-LSM2 antibody (ab66749)



Immunohistochemistry (Formalin/PFA-fixed paraffin-embedded sections) analysis of human kidney tissue labelling LSM2 with ab66749 at 4-8µg/ml. Arrows indicate positively labelled epithelial cells of the renal tubule. Magnification: 400X.

Immunohistochemistry (Formalin/PFA-fixed paraffin-embedded sections) - Anti-LSM2 antibody (ab66749)

**Please note:** All products are "FOR RESEARCH USE ONLY AND ARE NOT INTENDED FOR DIAGNOSTIC OR THERAPEUTIC USE"

### Our Abpromise to you: Quality guaranteed and expert technical support

- Replacement or refund for products not performing as stated on the datasheet
- Valid for 12 months from date of delivery
- Response to your inquiry within 24 hours
- We provide support in Chinese, English, French, German, Japanese and Spanish
- Extensive multi-media technical resources to help you
- We investigate all quality concerns to ensure our products perform to the highest standards

If the product does not perform as described on this datasheet, we will offer a refund or replacement. For full details of the Abpromise, please visit <https://www.abcam.co.jp/abpromise> or contact our technical team.

### Terms and conditions

- Guarantee only valid for products bought direct from Abcam or one of our authorized distributors