

Product datasheet

Anti-Endo G antibody ab66561

画像数 2

製品の概要

製品名	Anti-Endo G antibody
製品の詳細	Rabbit polyclonal to Endo G
由来種	Rabbit
アプリケーション	適用あり: WB
種交差性	交差種: Mouse, Rat, Human
免疫原	Synthetic peptide conjugated to KLH derived from within residues 50 - 150 of Human Endo G. Immunogenの所有権に関して(Peptide available as <a href="#">ab66560</a> .)
ポジティブ・コントロール	This antibody gave a positive signal in the following lysates: Human Heart Tissue Mouse Spinal Cord Tissue Mouse Skeletal Muscle Tissue Rat Brain Tissue HeLa Whole Cell

製品の特性

製品の状態	Liquid
保存方法	Shipped at 4°C. Store at +4°C short term (1-2 weeks). Upon delivery aliquot. Store at -20°C or -80°C. Avoid freeze / thaw cycle.
バッファー	Preservative: 0.02% Sodium Azide Constituents: 1% BSA, PBS, pH 7.4
精製度	Immunogen affinity purified
ポリ/モノ	ポリクローナル
アイソタイプ	IgG

アプリケーション

Our [Abpromise guarantee](#) covers the use of **ab66561** in the following tested applications.

The application notes include recommended starting dilutions; optimal dilutions/concentrations should be determined by the end user.

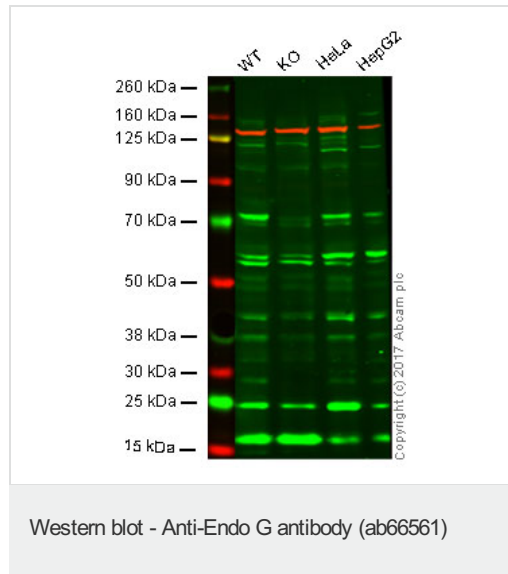
アプリケーション	Abreviews	特記事項
WB		Use a concentration of 1 µg/ml. Detects a band of approximately 40 kDa (predicted molecular weight: 35 kDa). Can be blocked with <a href="#">Human Endo G peptide (ab9648)</a> .

## ターゲット情報

**関連性** Endo G is a nuclear encoded endonuclease that is localized in the mitochondrion. The encoded protein cleaves DNA at GC tracts. It is capable of generating the RNA primers required by DNA polymerase gamma to initiate replication of mitochondrial DNA.

**細胞内局在** Cytoplasmic, Mitochondrial and Nuclear

## 画像



**Lane 1:** Wild type HAP1 whole cell lysate (20  $\mu$ g)

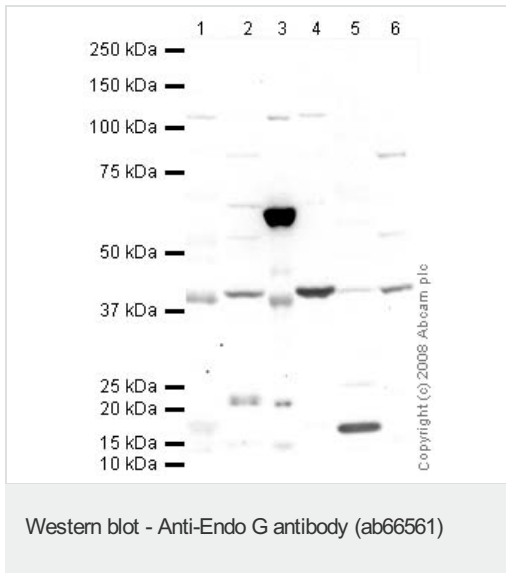
**Lane 2:** Endo G knockout HAP1 whole cell lysate (20  $\mu$ g)

**Lane 3:** HeLa whole cell lysate (20  $\mu$ g)

**Lane 4:** HepG2 whole cell lysate (20  $\mu$ g)

**Lanes 1 - 4:** Merged signal (red and green). Green - ab66561 observed at 36 kDa. Red - loading control, [ab18058](#), observed at 130 kDa.

ab66561 was found to be non-specific when Endo G knockout samples were used. Wild-type and Endo G knockout samples were subjected to SDS-PAGE. Ab66561 and [ab18058](#) (Mouse anti Vinculin loading control) were incubated overnight at 4°C at 1  $\mu$ g/ml and 1/20000 dilution respectively. Blots were developed with Goat anti-Rabbit IgG H&L (IRDye® 800CW) preabsorbed [ab216773](#) and Goat anti-Mouse IgG H&L (IRDye® 680RD) preabsorbed [ab216776](#) secondary antibodies at 1/20000 dilution for 1 hour at room temperature before imaging.



**All lanes :** Anti-Endo G antibody (ab66561) at 1 µg/ml

**Lane 1 :** Human heart tissue lysate - total protein (ab29431)

**Lane 2 :** Spinal Cord (Mouse) Tissue Lysate

**Lane 3 :** Rat Kidney Tissue Lysate

**Lane 4 :** Mouse skeletal muscle tissue lysate - total protein (ab29711)

**Lane 5 :** HeLa (Human epithelial carcinoma cell line) Whole Cell Lysate

**Lane 6 :** Brain (Rat) Tissue Lysate - normal tissue

Lysates/proteins at 10 µg per lane.

### Secondary

**All lanes :** Goat polyclonal to Rabbit IgG - H&L - Pre-Adsorbed (HRP) at 1/3000 dilution

Performed under reducing conditions.

**Predicted band size:** 35 kDa

**Observed band size:** 40 kDa

**Additional bands at:** 60 kDa. We are unsure as to the identity of these extra bands.

**Please note:** All products are "FOR RESEARCH USE ONLY AND ARE NOT INTENDED FOR DIAGNOSTIC OR THERAPEUTIC USE"

### Our Abpromise to you: Quality guaranteed and expert technical support

- Replacement or refund for products not performing as stated on the datasheet
- Valid for 12 months from date of delivery
- Response to your inquiry within 24 hours
- We provide support in Chinese, English, French, German, Japanese and Spanish
- Extensive multi-media technical resources to help you
- We investigate all quality concerns to ensure our products perform to the highest standards

If the product does not perform as described on this datasheet, we will offer a refund or replacement. For full details of the Abpromise, please visit <https://www.abcam.co.jp/abpromise> or contact our technical team.

### Terms and conditions

- Guarantee only valid for products bought direct from Abcam or one of our authorized distributors