

## Product datasheet

# Anti-NR2E1 / Tailless antibody ab66126

### 画像数 1

#### 製品の概要

製品名	Anti-NR2E1 / Tailless antibody
製品の詳細	Mouse polyclonal to NR2E1 / Tailless
由来種	Mouse
アプリケーション	適用あり: ELISA, WB
種交差性	交差種: Human 交差が予測される動物種: Mouse, Rat, Horse, Chicken, Cow, Dog, Xenopus laevis, Zebrafish, Rhesus monkey, Opossum
免疫原	Recombinant fragment with tag: NGDNTDSQKL NKIISEIQAL QEVVARFRQL RLDATEFACL KCMTFKAVP THSGSELRSF RNAAAIAALQ DEAQLTLNSY IHTRYPTQPC RFGK, corresponding to amino acids 249-343 of Human NR2E1/ Tailless <a href="#">Run BLAST with ExPASy</a> <a href="#">Run BLAST with NCBI</a>
ポジティブ・コントロール	Partial recombinant tagged NR2E1 / Tailless.

#### 製品の特性

製品の状態	Liquid
保存方法	Shipped at 4°C. Upon delivery aliquot and store at -20°C. Avoid freeze / thaw cycles.
バッファー	Preservative: None Constituents: Whole serum
精製度	Whole antiserum
ポリ/モノ	ポリクローナル
アイソタイプ	IgG

#### アプリケーション

Our [Abpromise guarantee](#) covers the use of **ab66126** in the following tested applications.

The application notes include recommended starting dilutions; optimal dilutions/concentrations should be determined by the end user.

アプリケーション	Abreviews	特記事項
ELISA		

WB

## 追加情報

ELISA: Use at an assay dependent dilution.  
WB: 1/1000 - 1/2500. Predicted molecular weight: 43 kDa.

This antibody has only been tested in WB against the recombinant fragment used as immunogen. We have no data on the detection of endogenous protein.

Not yet tested in other applications.  
Optimal dilutions/concentrations should be determined by the end user.

## ターゲット情報

## 機能

Orphan receptor that binds DNA as a monomer to hormone response elements (HRE) containing an extended core motif half-site sequence 5'-AAGGTCA-3' in which the 5' flanking nucleotides participate in determining receptor specificity. May be required for brain development. May be involved in the regulation of retinal development.

## 組織特異性

Brain specific. Present in all brain sections tested, highest levels in the caudate nucleus and hippocampus, weakest levels in the thalamus.

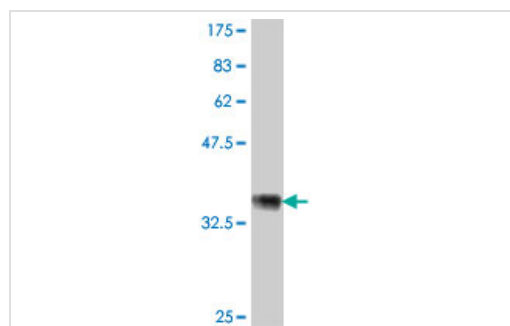
## 配列類似性

Belongs to the nuclear hormone receptor family. NR2 subfamily.  
Contains 1 nuclear receptor DNA-binding domain.

## 細胞内局在

Nucleus.

## 画像



Western blot - Anti-NR2E1 / Tailless antibody  
(ab66126)

Western blot against tagged recombinant protein immunogen using ab66126 NR2E1 / Tailless antibody at 1/1000 dilution. Predicted band size of immunogen is 36 kDa.

**Please note:** All products are "FOR RESEARCH USE ONLY AND ARE NOT INTENDED FOR DIAGNOSTIC OR THERAPEUTIC USE"

## Our Promise to you: Quality guaranteed and expert technical support

- Replacement or refund for products not performing as stated on the datasheet

- Valid for 12 months from date of delivery
- Response to your inquiry within 24 hours
  
- We provide support in Chinese, English, French, German, Japanese and Spanish
- Extensive multi-media technical resources to help you
- We investigate all quality concerns to ensure our products perform to the highest standards

If the product does not perform as described on this datasheet, we will offer a refund or replacement. For full details of the Abpromise, please visit <https://www.abcam.co.jp/abpromise> or contact our technical team.

### **Terms and conditions**

---

- Guarantee only valid for products bought direct from Abcam or one of our authorized distributors