

Product datasheet

Anti-MOK protein kinase antibody ab64815

画像数 2

製品の概要

製品名	Anti-MOK protein kinase antibody
製品の詳細	Rabbit polyclonal to MOK protein kinase
由来種	Rabbit
特異性	ab64815 detects endogenous levels of total MOK protein kinase.
アプリケーション	適用あり: ELISA, IHC-P, WB
種交差性	交差種: Human
免疫原	A synthetic peptide derived from an internal region of human MOK protein kinase.
ポジティブ・コントロール	Human brain tissue. Extracts from HepG2, COLO205 and 293 cells.

製品の特性

製品の状態	Liquid
保存方法	Shipped at 4°C. Store at -20°C. Stable for 12 months at -20°C.
バッファー	Preservative: 0.02% Sodium Azide Constituents: 50% Glycerol, PBS, 150mM Sodium chloride, pH 7.4
精製度	Immunogen affinity purified
特記事項 (精製)	ab64815 was affinity-purified from rabbit antiserum by affinity-chromatography using epitope-specific immunogen.
ポリ/モノ	ポリクローナル
アイソタイプ	IgG

アプリケーション

Our [Abpromise guarantee](#) covers the use of **ab64815** in the following tested applications.

The application notes include recommended starting dilutions; optimal dilutions/concentrations should be determined by the end user.

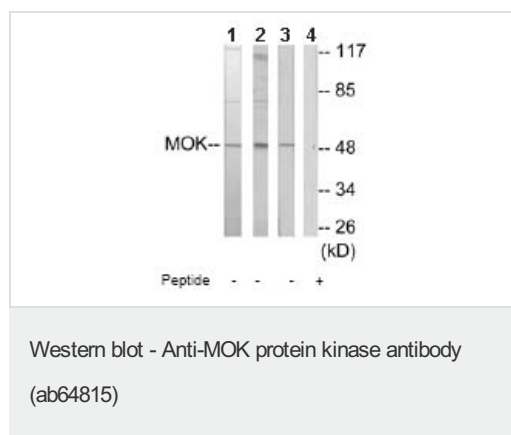
アプリケーション	Abreviews	特記事項
ELISA		1/5000.

アプリケーション	Abreviews	特記事項
IHC-P		1/50 - 1/100.
WB		1/500 - 1/1000. Detects a band of approximately 50 kDa (predicted molecular weight: 48 kDa).

ターゲット情報

機能	Able to phosphorylate several exogenous substrates and to undergo autophosphorylation.
組織特異性	Expressed in heart, brain, lung, kidney, and pancreas, and at very low levels in placenta, liver and skeletal muscle. Detected in retina.
配列類似性	Belongs to the protein kinase superfamily. CMGC Ser/Thr protein kinase family. CDC2/CDKX subfamily. Contains 1 protein kinase domain.
翻訳後修飾	Autophosphorylated.
細胞内局在	Cytoplasm.

画像



All lanes : Anti-MOK protein kinase antibody (ab64815) at 1/500 dilution

Lane 1 : Extracts from HepG2 cells

Lane 2 : Extracts from COLO205 cells

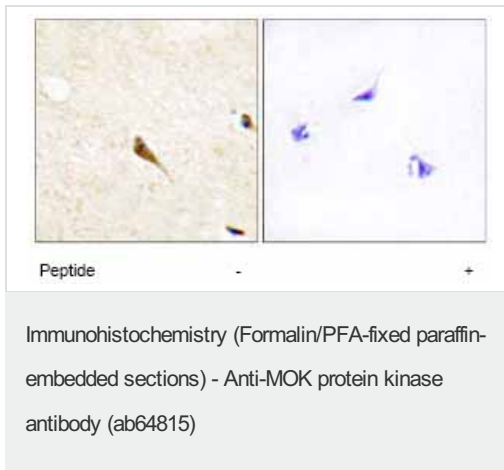
Lane 3 : Extracts from 293 cells

Lane 4 : Extracts from 293 cells with immunising peptide at 5 µg

Lysates/proteins at 5 µg per lane.

Predicted band size: 48 kDa

Observed band size: 50 kDa



Immunohistochemistry analysis of paraffin-embedded human brain tissue using ab64815 at 1/50 dilution in the presence (right panel) or absence (left panel) of immunising peptide.

Please note: All products are "FOR RESEARCH USE ONLY AND ARE NOT INTENDED FOR DIAGNOSTIC OR THERAPEUTIC USE"

Our Abpromise to you: Quality guaranteed and expert technical support

- Replacement or refund for products not performing as stated on the datasheet
- Valid for 12 months from date of delivery
- Response to your inquiry within 24 hours
- We provide support in Chinese, English, French, German, Japanese and Spanish
- Extensive multi-media technical resources to help you
- We investigate all quality concerns to ensure our products perform to the highest standards

If the product does not perform as described on this datasheet, we will offer a refund or replacement. For full details of the Abpromise, please visit <https://www.abcam.co.jp/abpromise> or contact our technical team.

Terms and conditions

- Guarantee only valid for products bought direct from Abcam or one of our authorized distributors