


Product datasheet

Anti-IL2 Receptor alpha (phospho S268) antibody ab61798

画像数 2

製品の概要

製品名	Anti-IL2 Receptor alpha (phospho S268) antibody
製品の詳細	Rabbit polyclonal to IL2 Receptor alpha (phospho S268)
由来種	Rabbit
特異性	Detects endogenous levels of IL2 Receptor alpha only when phosphorylated at serine 268.
アプリケーション	適用あり: ICC/IF, WB, ELISA
種交差性	交差種: Human 交差が予測される動物種: Mouse 
免疫原	Synthetic phosphopeptide derived from human IL2 Receptor alpha around the phosphorylation site of serine 268 (R-K-S ^P -R-R). (Swiss-Prot P01589).
ポジティブ・コントロール	HeLa cells, extracts from LOVO cells

製品の特性

製品の状態	Liquid
保存方法	Shipped at 4°C. Upon delivery aliquot and store at -20°C. Avoid freeze / thaw cycles.
バッファー	Preservative: 0.02% Sodium Azide Constituents: 50% Glycerol, PBS, 150mM Sodium chloride, pH 7.4
精製度	Immunogen affinity purified
特記事項 (精製)	The antibody was affinity-purified from rabbit antiserum by affinity-chromatography using epitope-specific phosphopeptide. The antibody against non-phosphopeptide was removed by chromatography using non-phosphopeptide corresponding to the phosphorylation site.
ポリ/モノ	ポリクローナル
アイソタイプ	IgG

アプリケーション

Our [Abpromise guarantee](#) covers the use of **ab61798** in the following tested applications.

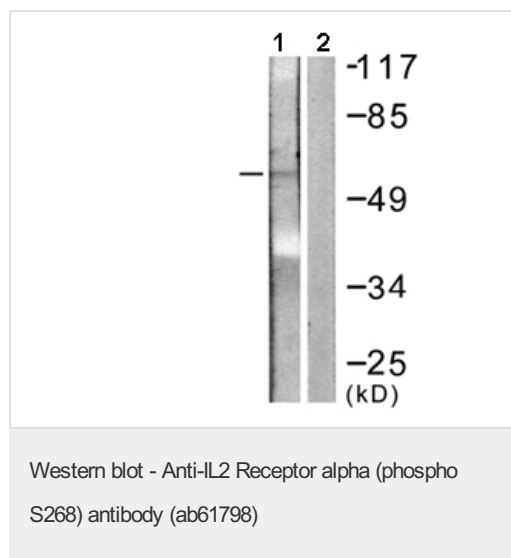
The application notes include recommended starting dilutions; optimal dilutions/concentrations should be determined by the end user.

アプリケーション	Abreviews	特記事項
ICC/IF		1/500 - 1/1000.
WB		1/500 - 1/1000. Detects a band of approximately 60 kDa (predicted molecular weight: 31 kDa).
ELISA		1/10000.

ターゲット情報

機能	Receptor for interleukin-2.
関連疾患	Genetic variations in IL2RA are associated with susceptibility to diabetes mellitus insulin-dependent type 10 (IDDM10) [MIM:601942]. A multifactorial disorder of glucose homeostasis that is characterized by susceptibility to ketoacidosis in the absence of insulin therapy. Clinical features are polydipsia, polyphagia and polyuria which result from hyperglycemia-induced osmotic diuresis and secondary thirst. These derangements result in long-term complications that affect the eyes, kidneys, nerves, and blood vessels.
配列類似性	Contains 2 Sushi (CCP/SCR) domains.
細胞内局在	Membrane.

画像



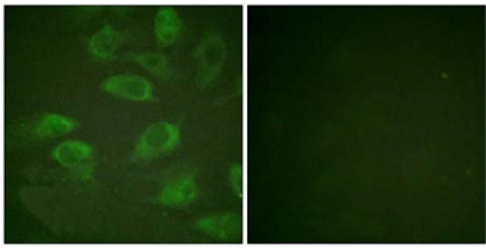
All lanes : Anti-IL2 Receptor alpha (phospho S268) antibody (ab61798) at 1/500 dilution

Lane 1 : extracts from LOVO cells

Lane 2 : extracts from LOVO cells with immunizing peptide

Predicted band size: 31 kDa

Observed band size: 60 kDa



Ab61798 at 1/500 dilution staining HeLa cells without (left) and with (right) immunizing peptide.

Immunocytochemistry/ Immunofluorescence - Anti-IL2 Receptor alpha (phospho S268) antibody (ab61798)

Please note: All products are "FOR RESEARCH USE ONLY AND ARE NOT INTENDED FOR DIAGNOSTIC OR THERAPEUTIC USE"

Our Abpromise to you: Quality guaranteed and expert technical support

- Replacement or refund for products not performing as stated on the datasheet
- Valid for 12 months from date of delivery
- Response to your inquiry within 24 hours
- We provide support in Chinese, English, French, German, Japanese and Spanish
- Extensive multi-media technical resources to help you
- We investigate all quality concerns to ensure our products perform to the highest standards

If the product does not perform as described on this datasheet, we will offer a refund or replacement. For full details of the Abpromise, please visit <https://www.abcam.co.jp/abpromise> or contact our technical team.

Terms and conditions

- Guarantee only valid for products bought direct from Abcam or one of our authorized distributors