

Product datasheet

Anti-PKC mu (phospho S910) antibody ab61787

画像数 1

製品の概要

製品名	Anti-PKC mu (phospho S910) antibody
製品の詳細	Rabbit polyclonal to PKC mu (phospho S910)
由来種	Rabbit
特異性	ab61787 detects PKC mu only when phosphorylated at serine 910 (Human: Ser910; Mouse: Ser916; Rat: Ser647).
アプリケーション	適用あり: ELISA, WB
種交差性	交差種: Human 交差が予測される動物種: Mouse, Rat ▲
免疫原	Synthesized phosphopeptide derived from human PKC mu around the phosphorylation site of serine 910 (R-V-S ^P -I-L).
ポジティブ・コントロール	Extracts from A431 cells

製品の特性

製品の状態	Liquid
保存方法	Shipped at 4°C. Upon delivery aliquot and store at -20°C. Avoid freeze / thaw cycles.
バッファー	Preservative: 0.02% Sodium Azide Constituents: 50% Glycerol, PBS, 150mM Sodium chloride, pH 7.4
精製度	Immunogen affinity purified
特記事項 (精製)	The antibody was affinity-purified from rabbit antiserum by affinity-chromatography using epitope-specific phosphopeptide. The antibody against non-phosphopeptide was removed by chromatography using non-phosphopeptide corresponding to the phosphorylation site.
ポリモノ	ポリクローナル
アイソタイプ	IgG

アプリケーション

Our [Abpromise guarantee](#) covers the use of **ab61787** in the following tested applications.

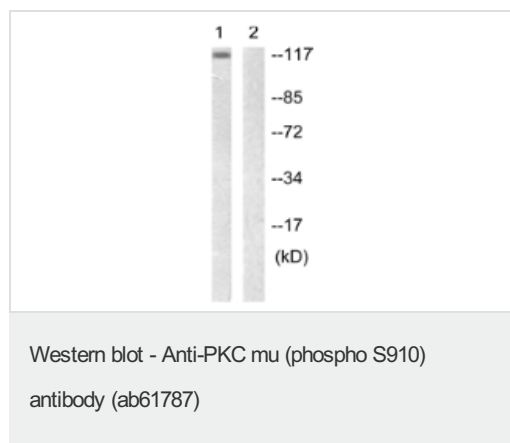
The application notes include recommended starting dilutions; optimal dilutions/concentrations should be determined by the end user.

アプリケーション	Abreviews	特記事項
ELISA		1/10000.
WB		1/500 - 1/1000. Detects a band of approximately 102 kDa (predicted molecular weight: 102 kDa).

ターゲット情報

機能	Converts transient diacylglycerol (DAG) signals into prolonged physiological effects, downstream of PKC. Involved in resistance to oxidative stress through activation of NF-kappa-B.
配列類似性	Belongs to the protein kinase superfamily, CAMK Ser/Thr protein kinase family, PKD subfamily. Contains 1 PH domain. Contains 2 phorbol-ester/DAG-type zinc fingers. Contains 1 protein kinase domain.
細胞内局在	Cytoplasm. Membrane. Translocation to the cell membrane is required for kinase activation.

画像



All lanes : Anti-PKC mu (phospho S910) antibody (ab61787) at 1/500 dilution

Lane 1 : Extracts from A431 cells

Lane 2 : Extracts from A431 cells with immunising phosphopeptide

Predicted band size: 102 kDa

Observed band size: 102 kDa

Please note: All products are "FOR RESEARCH USE ONLY AND ARE NOT INTENDED FOR DIAGNOSTIC OR THERAPEUTIC USE"

Our Abpromise to you: Quality guaranteed and expert technical support

- Replacement or refund for products not performing as stated on the datasheet
- Valid for 12 months from date of delivery
- Response to your inquiry within 24 hours
- We provide support in Chinese, English, French, German, Japanese and Spanish
- Extensive multi-media technical resources to help you
- We investigate all quality concerns to ensure our products perform to the highest standards

If the product does not perform as described on this datasheet, we will offer a refund or replacement. For full details of the Abpromise, please visit <https://www.abcam.co.jp/abpromise> or contact our technical team.

Terms and conditions

- Guarantee only valid for products bought direct from Abcam or one of our authorized distributors