

Product datasheet

Anti-Apc1 antibody ab61187

画像数 1

製品の概要

製品名	Anti-Apc1 antibody
製品の詳細	Rabbit polyclonal to Apc1
由来種	Rabbit
特異性	Detects endogenous levels of total Apc1 protein
アプリケーション	適用あり: IHC-P, ELISA
種交差性	交差種: Human 交差が予測される動物種: Mouse
免疫原	Synthetic non-phosphopeptide (Human) from around the phosphorylation site of serine 688 (SLS ^P PV)
ポジティブ・コントロール	Human breast carcinoma tissue

製品の特性

製品の状態	Liquid
保存方法	Shipped at 4°C. Store at -20°C. Stable for 12 months at -20°C.
バッファー	Preservative: 0.02% Sodium Azide Constituents: 50% Glycerol, PBS (without Mg ²⁺ and Ca ²⁺), 150mM Sodium chloride, pH 7.4
精製度	Immunogen affinity purified
ポリ/モノ	ポリクローナル
アイソタイプ	IgG

アプリケーション

Our [Abpromise guarantee](#) covers the use of **ab61187** in the following tested applications.

The application notes include recommended starting dilutions; optimal dilutions/concentrations should be determined by the end user.

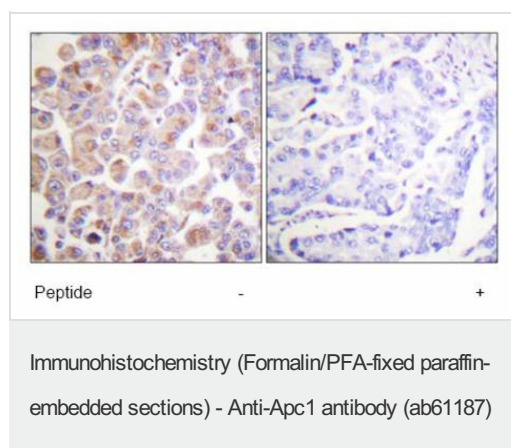
アプリケーション	Abreviews	特記事項
IHC-P		1/50 - 1/100.

アプリケーション	Abreviews	特記事項
ELISA		1/10000.

ターゲット情報

機能	Component of the anaphase promoting complex/cyclosome (APC/C), a cell cycle-regulated E3 ubiquitin ligase that controls progression through mitosis and the G1 phase of the cell cycle. The APC/C complex acts by mediating ubiquitination and subsequent degradation of target proteins: it mainly mediates the formation of 'Lys-11'-linked polyubiquitin chains and, to a lower extent, the formation of 'Lys-48'- and 'Lys-63'-linked polyubiquitin chains.
パスウェイ	Protein modification; protein ubiquitination.
配列類似性	Belongs to the APC1 family. Contains 4 PC repeats.
翻訳後修飾	Phosphorylated. Phosphorylation on Ser-355 occurs specifically during mitosis.

画像



Immunohistochemical analysis of paraffin embedded human breast carcinoma tissue using ab61187 at 1/50 dilution. Samples were treated +/- peptide.

Please note: All products are "FOR RESEARCH USE ONLY AND ARE NOT INTENDED FOR DIAGNOSTIC OR THERAPEUTIC USE"

Our Abpromise to you: Quality guaranteed and expert technical support

- Replacement or refund for products not performing as stated on the datasheet
- Valid for 12 months from date of delivery
- Response to your inquiry within 24 hours
- We provide support in Chinese, English, French, German, Japanese and Spanish
- Extensive multi-media technical resources to help you
- We investigate all quality concerns to ensure our products perform to the highest standards

If the product does not perform as described on this datasheet, we will offer a refund or replacement. For full details of the Abpromise, please visit <https://www.abcam.co.jp/abpromise> or contact our technical team.

Terms and conditions

- Guarantee only valid for products bought direct from Abcam or one of our authorized distributors