


Product datasheet

Anti-Ephrin B antibody ab61161

画像数 1

製品の概要

製品名	Anti-Ephrin B antibody
製品の詳細	Rabbit polyclonal to Ephrin B
由来種	Rabbit
特異性	Detects endogenous levels of total Ephrin B.
アプリケーション	適用あり: WB, ELISA
種交差性	交差種: Human 交差が予測される動物種: Mouse 
免疫原	Synthetic non-phosphopeptide from around the phosphorylation site of tyrosine 317 (PHY ^P EK) of human Ephrin B
ポジティブ・コントロール	Cos7 cells

製品の特性

製品の状態	Liquid
保存方法	Shipped at 4°C. Store at -20°C. Stable for 12 months at -20°C.
バッファー	Preservative: 0.02% Sodium Azide Constituents: 50% Glycerol, PBS (without Mg ²⁺ and Ca ²⁺), 150mM Sodium chloride, pH 7.4
精製度	Immunogen affinity purified
ポリ/モノ	ポリクローナル
アイソタイプ	IgG

アプリケーション

Our [Abpromise guarantee](#) covers the use of **ab61161** in the following tested applications.

The application notes include recommended starting dilutions; optimal dilutions/concentrations should be determined by the end user.

アプリケーション	Abreviews	特記事項
WB		1/500 - 1/1000. Detects a band of approximately 38 kDa (predicted molecular weight: 38 kDa).

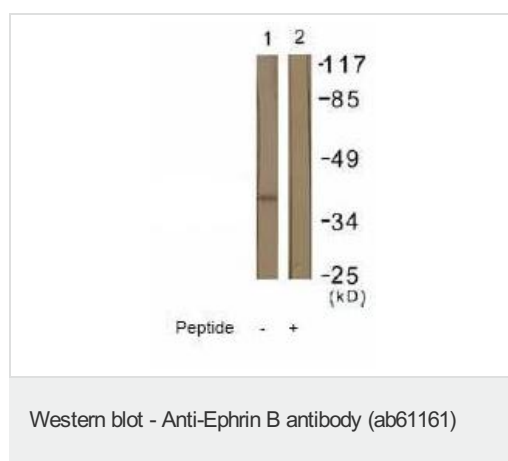
アプリケーション	Abreviews	特記事項
ELISA		1/40000.

ターゲット情報

関連性 Ephrin B proteins are thought to play key roles in cellular functions as diverse as neuronal migration and blood vessel development. Ephrin B molecules expressed at the membrane surface bind to the Ephrin B family receptors on target cells during cell to cell contact. This interaction leads to cell signaling in the target cell but also generates a reverse signal in the cell expressing Ephrin B on its surface. This reverse signaling event is thought to be critical for vessel maturation and neuronal development. Importantly, tyrosine phosphorylation of Ephrin B is thought to be a critical component of this reverse signaling event. Recent work demonstrated that Tyr331 of Ephrin B was phosphorylated in HEK293 cells after stimulation by the soluble Ephrin B2 receptor tyrosine kinase.

細胞内局在 Membrane; single pass type I membrane protein.

画像



All lanes : Anti-Ephrin B antibody (ab61161)
at 1/500 dilution

Lane 1 : Cos 7 cell extract

Lane 2 : Cos 7 cell extract with immunizing peptide

Predicted band size: 38 kDa

Observed band size: 38 kDa

Western blot - Anti-Ephrin B antibody (ab61161)

Please note: All products are "FOR RESEARCH USE ONLY AND ARE NOT INTENDED FOR DIAGNOSTIC OR THERAPEUTIC USE"

Our Abpromise to you: Quality guaranteed and expert technical support

- Replacement or refund for products not performing as stated on the datasheet
- Valid for 12 months from date of delivery
- Response to your inquiry within 24 hours
- We provide support in Chinese, English, French, German, Japanese and Spanish
- Extensive multi-media technical resources to help you
- We investigate all quality concerns to ensure our products perform to the highest standards

If the product does not perform as described on this datasheet, we will offer a refund or replacement. For full details of the Abpromise, please visit <https://www.abcam.co.jp/abpromise> or contact our technical team.

Terms and conditions

- Guarantee only valid for products bought direct from Abcam or one of our authorized distributors