

Product datasheet

Anti-PPIL4 antibody ab57942

画像数 1

製品の概要

| | |
|----------|--|
| 製品名 | Anti-PPIL4 antibody |
| 製品の詳細 | Mouse monoclonal to PPIL4 |
| 由来種 | Mouse |
| アプリケーション | 適用あり: WB |
| 種交差性 | 交差種: Human |
| 免疫原 | Recombinant fragment: EKEDEDYMPIKNTNQDIYRE MGF ^{GH} YEEEE SCWEKQKSEK RDRTQNR ^S RS RSRERDGHYS NSHKSKYQTD LY, corresponding to amino acids 395-467 of Human PPIL4 Run BLAST with ExPASy Run BLAST with NCBI |

製品の特性

| | |
|--------|---|
| 製品の状態 | Liquid |
| 保存方法 | Shipped at 4°C. Upon delivery aliquot and store at -20°C or -80°C. Avoid repeated freeze / thaw cycles. |
| バッファー | Preservative: None PBS, pH 7.2 |
| 精製度 | Protein G purified |
| ポリモノ | モノクローナル |
| アイソタイプ | IgG2a |
| 軽鎖の種類 | kappa |

アプリケーション

Our [Abpromise guarantee](#) covers the use of **ab57942** in the following tested applications.

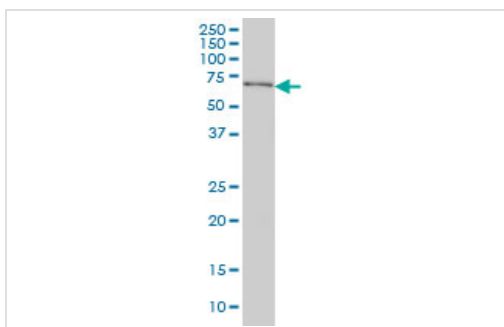
The application notes include recommended starting dilutions; optimal dilutions/concentrations should be determined by the end user.

| アプリケーション | Abreviews | 特記事項 |
|----------|-----------|---|
| WB | | Use a concentration of 1 - 5 µg/ml. Predicted molecular weight: 57 kDa. |

ターゲット情報

| | |
|-------|---|
| 機能 | PPases accelerate the folding of proteins. It catalyzes the cis-trans isomerization of proline imidic peptide bonds in oligopeptides. |
| 組織特異性 | Abundantly expressed in kidney but has a ubiquitously low expression pattern in other adult tissues. |
| 配列類似性 | Belongs to the cyclophilin-type PPase family, PPIL4 subfamily. Contains 1 PPase cyclophilin-type domain. Contains 1 RRM (RNA recognition motif) domain. |
| 細胞内局在 | Nucleus. |

画像



Western blot - Anti-PPIL4 antibody (ab57942)

PPIL4 antibody (ab57942) at 1ug/lane + HeLa cell lysate at 25ug/lane.

Please note: All products are "FOR RESEARCH USE ONLY AND ARE NOT INTENDED FOR DIAGNOSTIC OR THERAPEUTIC USE"

Our Abpromise to you: Quality guaranteed and expert technical support

- Replacement or refund for products not performing as stated on the datasheet
- Valid for 12 months from date of delivery
- Response to your inquiry within 24 hours
- We provide support in Chinese, English, French, German, Japanese and Spanish
- Extensive multi-media technical resources to help you
- We investigate all quality concerns to ensure our products perform to the highest standards

If the product does not perform as described on this datasheet, we will offer a refund or replacement. For full details of the Abpromise, please visit <https://www.abcam.co.jp/abpromise> or contact our technical team.

Terms and conditions

- Guarantee only valid for products bought direct from Abcam or one of our authorized distributors