

Product datasheet

Anti-KCNK10 antibody ab57259

画像数 1

製品の概要

製品名	Anti-KCNK10 antibody
製品の詳細	Mouse monoclonal to KCNK10
由来種	Mouse
アプリケーション	適用あり: WB
種交差性	交差種: Human
免疫原	Recombinant fragment: SEDNIINKFG STSRLTKRKN KDLKKTLPED VQKMYKTFRN YSLDEEKKEE ETEKMCNSDN SSTAMLTDCl QQHAELENGM IPTDTKDREP ENNSLLEDRN , corresponding to amino acids 439-539 of Human KCNK10 <a href="#">Run BLAST with ExPASy</a> <a href="#">Run BLAST with NCBI</a>

製品の特性

製品の状態	Liquid
保存方法	Shipped at 4°C. Upon delivery aliquot and store at -20°C or -80°C. Avoid repeated freeze / thaw cycles.
バッファー	Preservative: None PBS, pH 7.2
精製度	Protein G purified
ポリモノ	モノクローナル
アイソタイプ	IgG1
軽鎖の種類	kappa

アプリケーション

Our [Abpromise guarantee](#) covers the use of **ab57259** in the following tested applications.

The application notes include recommended starting dilutions; optimal dilutions/concentrations should be determined by the end user.

アプリケーション	Abreviews	特記事項

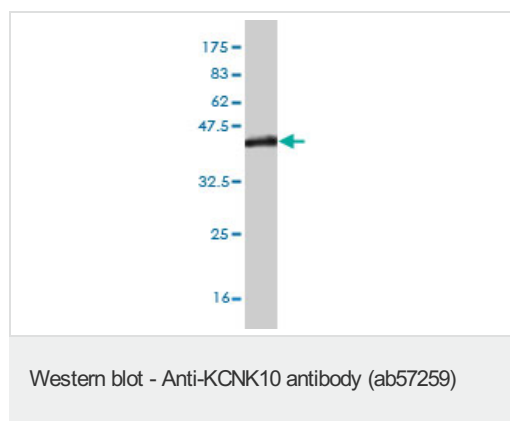
アプリケーション	Abreviews	特記事項
----------	-----------	------

WB Use a concentration of 1 - 5 µg/ml.  
 This antibody has only been tested in WB against the recombinant fragment used as immunogen. We have no data on the detection of endogenous protein.

## ターゲット情報

機能	Outward rectifying potassium channel. Produces rapidly activating and non-inactivating outward rectifier K(+) currents. Activated by arachidonic acid and other naturally occurring unsaturated free fatty acids.
組織特異性	Abundantly expressed in pancreas and kidney and to a lower level in brain, testis, colon, and small intestine. Isoform b is strongly expressed in kidney (primarily in the proximal tubule) and pancreas, whereas isoform c is abundantly expressed in brain.
配列類似性	Belongs to the two pore domain potassium channel (TC 1.A.1.8) family.
細胞内局在	Membrane.

## 画像



Western blot against tagged recombinant protein immunogen using ab57259 KCNK10 antibody at 1µg/ml. Predicted band size of immunogen is 37 kDa

**Please note:** All products are "FOR RESEARCH USE ONLY AND ARE NOT INTENDED FOR DIAGNOSTIC OR THERAPEUTIC USE"

## Our Abpromise to you: Quality guaranteed and expert technical support

- Replacement or refund for products not performing as stated on the datasheet
- Valid for 12 months from date of delivery
- Response to your inquiry within 24 hours
- We provide support in Chinese, English, French, German, Japanese and Spanish
- Extensive multi-media technical resources to help you
- We investigate all quality concerns to ensure our products perform to the highest standards

If the product does not perform as described on this datasheet, we will offer a refund or replacement. For full details of the Abpromise, please visit <https://www.abcam.co.jp/abpromise> or contact our technical team.

## Terms and conditions

---

- Guarantee only valid for products bought direct from Abcam or one of our authorized distributors