

Product datasheet

Anti-ARHGEF1 antibody ab56464

画像数 1

製品の概要

製品名	Anti-ARHGEF1 antibody
製品の詳細	Mouse monoclonal to ARHGEF1
由来種	Mouse
アプリケーション	適用あり: WB
種交差性	交差種: Human
免疫原	Recombinant fragment: CRPGPEGQLA ATALRKVLSL KQLLFP AEED NGAGPPRDGD GVPGGGLSP ARTQEIQENL LSLEETMKQL EELEEEFCRL RPLLSQLGGN SVPQPGCT, corresponding to amino acids 830-927 of Human ARHGEF1 <a href="#">Run BLAST with ExPASy</a> <a href="#">Run BLAST with NCBI</a>

製品の特性

製品の状態	Liquid
保存方法	Shipped at 4°C. Upon delivery aliquot and store at -20°C or -80°C. Avoid repeated freeze / thaw cycles.
バッファー	Preservative: None PBS, pH 7.2
精製度	Protein G purified
ポリモノ	モノクローナル
アイソタイプ	IgG2a
軽鎖の種類	kappa

アプリケーション

Our [Abpromise guarantee](#) covers the use of **ab56464** in the following tested applications.

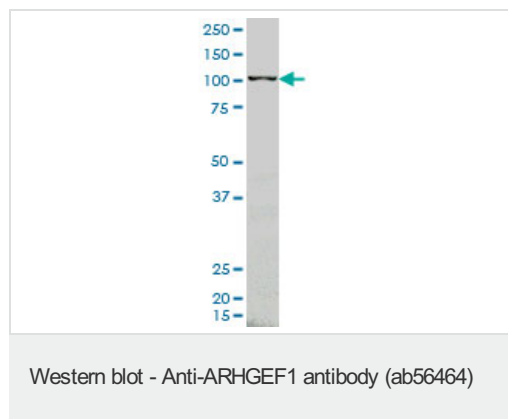
The application notes include recommended starting dilutions; optimal dilutions/concentrations should be determined by the end user.

アプリケーション	Abreviews	特記事項
WB		Use a concentration of 1 - 5 µg/ml. Predicted molecular weight: 102 kDa.

## ターゲット情報

機能	Seems to play a role in the regulation of RhoA GTPase by guanine nucleotide-binding alpha-12 (GNA12) and alpha-13 (GNA13) subunits. Acts as GTPase-activating protein (GAP) for GNA12 and GNA13, and as guanine nucleotide exchange factor (GEF) for RhoA GTPase. Activated G alpha 13/GNA13 stimulates the RhoGEF activity through interaction with the RGS-like domain. This GEF activity is inhibited by binding to activated GNA12. Mediates angiotensin-2-induced RhoA activation.
組織特異性	Ubiquitously expressed.
配列類似性	Contains 1 DH (DBL-homology) domain. Contains 1 PH domain. Contains 1 RGS (RGS-like) domain.
ドメイン	The RGS domain, also known as rgRGS domain, is necessary but not sufficient for GAP activity. The DH domain is involved in interaction with CCPG1.
翻訳後修飾	Phosphorylated by PKCA. Angiotensin-2 induced Tyr-738 phosphorylation is mediated by JAK2.
細胞内局在	Cytoplasm. Membrane. Translocated to the membrane by activated GNA13 or LPA stimulation.

## 画像



ARHGEF1 antibody (ab56464) at 1ug/lane +  
K-562 cell lysate at 25ug/lane.

**Please note:** All products are "FOR RESEARCH USE ONLY AND ARE NOT INTENDED FOR DIAGNOSTIC OR THERAPEUTIC USE"

## Our Abpromise to you: Quality guaranteed and expert technical support

- Replacement or refund for products not performing as stated on the datasheet
- Valid for 12 months from date of delivery
- Response to your inquiry within 24 hours
- We provide support in Chinese, English, French, German, Japanese and Spanish
- Extensive multi-media technical resources to help you
- We investigate all quality concerns to ensure our products perform to the highest standards

If the product does not perform as described on this datasheet, we will offer a refund or replacement. For full details of the Abpromise, please visit <https://www.abcam.co.jp/abpromise> or contact our technical team.

## Terms and conditions

---

- Guarantee only valid for products bought direct from Abcam or one of our authorized distributors