

Product datasheet

Anti-SLMAP antibody ab56328

1 References [画像数 1](#)

製品の概要

製品名	Anti-SLMAP antibody
製品の詳細	Mouse monoclonal to SLMAP
由来種	Mouse
アプリケーション	適用あり: WB
種交差性	交差種: Human
免疫原	Recombinant fragment, corresponding to amino acids 677-785 of Human SLMAP

製品の特性

製品の状態	Liquid
保存方法	Shipped at 4°C. Upon delivery aliquot and store at -20°C or -80°C. Avoid repeated freeze / thaw cycles.
バッファー	Preservative: None PBS, pH 7.2
精製度	Protein G purified
ポリ/モノ	モノクローナル
アイソタイプ	IgG2a
軽鎖の種類	kappa

アプリケーション

Our [Abpromise guarantee](#) covers the use of **ab56328** in the following tested applications.

The application notes include recommended starting dilutions; optimal dilutions/concentrations should be determined by the end user.

アプリケーション	Abreviews	特記事項
WB		Use a concentration of 1 - 5 µg/ml. Predicted molecular weight: 80 kDa.

ターゲット情報

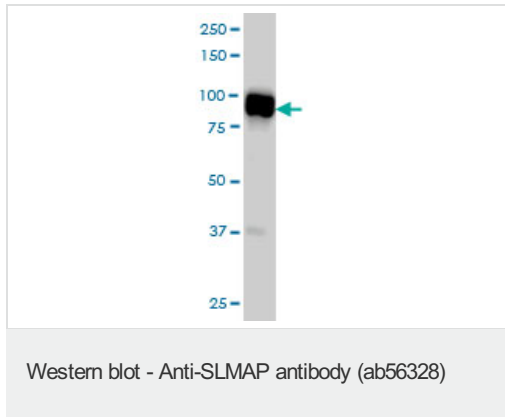
関連性

Multiple SLMAP (Sarcolemmal-membrane-associated protein) mRNAs are generated by alternative splicing mechanisms. These isoforms have unique COOH-terminal membrane anchors that target SLMAP to distinct subcellular membranes. Regulated levels and the temporal induction of SLMAP isoforms are important for normal muscle development.

細胞内局在

Cell membrane, sarcolemma; Single-pass type IV membrane protein. Note=Membrane-associated. Distributed in the transverse tubules and near the junctional sarcoplasmic reticulum. Detected along the Z- and M-lines in cardiomyocytes. Centrosome. Localizes to the centrosomes in a microtubule-dependent manner

画像



SLMAP antibody (ab56328) at 1ug/lane + A-431 cell lysate at 25ug/lane.

Please note: All products are "FOR RESEARCH USE ONLY AND ARE NOT INTENDED FOR DIAGNOSTIC OR THERAPEUTIC USE"

Our Abpromise to you: Quality guaranteed and expert technical support

- Replacement or refund for products not performing as stated on the datasheet
- Valid for 12 months from date of delivery
- Response to your inquiry within 24 hours
- We provide support in Chinese, English, French, German, Japanese and Spanish
- Extensive multi-media technical resources to help you
- We investigate all quality concerns to ensure our products perform to the highest standards

If the product does not perform as described on this datasheet, we will offer a refund or replacement. For full details of the Abpromise, please visit <https://www.abcam.co.jp/abpromise> or contact our technical team.

Terms and conditions

- Guarantee only valid for products bought direct from Abcam or one of our authorized distributors