

Product datasheet

Anti-Mammaglobin A antibody ab55416

画像数 1

製品の概要

製品名	Anti-Mammaglobin A antibody
製品の詳細	Rabbit polyclonal to Mammaglobin A
由来種	Rabbit
特異性	ab55416 detects endogenous levels of total Mammaglobin protein.
アプリケーション	適用あり: WB, ELISA
種交差性	交差種: Human
免疫原	Synthetic peptide derived from human Mammaglobin.
ポジティブ・コントロール	HepG2 cell extract.

製品の特性

製品の状態	Liquid
保存方法	Shipped at 4°C. Store at -20°C. Stable for 12 months at -20°C.
バッファー	Preservative: 0.02% Sodium Azide Constituents: 50% Glycerol, PBS (without Mg ²⁺ and Ca ²⁺), 150mM Sodium chloride, pH 7.4
精製度	Immunogen affinity purified
ポリ/モノ	ポリクローナル
アイソタイプ	IgG

アプリケーション

Our [Abpromise guarantee](#) covers the use of **ab55416** in the following tested applications.

The application notes include recommended starting dilutions; optimal dilutions/concentrations should be determined by the end user.

アプリケーション	Abreviews	特記事項
WB		1/500 - 1/1000. Detects a band of approximately 10 kDa (predicted molecular weight: 10 kDa).
ELISA		1/5000.

ターゲット情報

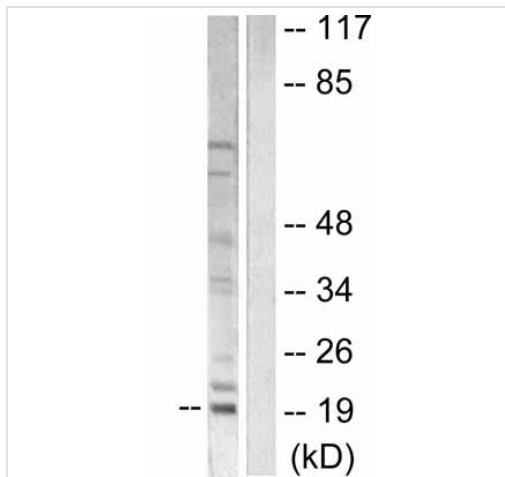
組織特異性

Mammary gland specific. Over-expressed in breast cancer.

配列類似性

Belongs to the secretoglobulin family. Lipophilin subfamily.

画像



Western blot - Anti-Mammaglobin A antibody
(ab55416)

All lanes : Anti-Mammaglobin A antibody (ab55416) at 1/500 dilution

Lane 1 : HepG2 cell extract without peptide

Lane 2 : HepG2 cell extract with peptide

Predicted band size: 10 kDa

Please note: All products are "FOR RESEARCH USE ONLY AND ARE NOT INTENDED FOR DIAGNOSTIC OR THERAPEUTIC USE"

Our Abpromise to you: Quality guaranteed and expert technical support

- Replacement or refund for products not performing as stated on the datasheet
- Valid for 12 months from date of delivery
- Response to your inquiry within 24 hours
- We provide support in Chinese, English, French, German, Japanese and Spanish
- Extensive multi-media technical resources to help you
- We investigate all quality concerns to ensure our products perform to the highest standards

If the product does not perform as described on this datasheet, we will offer a refund or replacement. For full details of the Abpromise, please visit <https://www.abcam.co.jp/abpromise> or contact our technical team.

Terms and conditions

- Guarantee only valid for products bought direct from Abcam or one of our authorized distributors