

Product datasheet

Anti-Gelsolin antibody ab55070

5 References [画像数 3](#)

製品の概要

製品名	Anti-Gelsolin antibody
製品の詳細	Mouse monoclonal to Gelsolin
由来種	Mouse
アプリケーション	適用あり: WB, IHC-P, ICC/IF
種交差性	交差種: Human
免疫原	Recombinant fragment, corresponding to amino acids 673-783 of Human Gelsolin

製品の特性

製品の状態	Liquid
保存方法	Shipped at 4°C. Upon delivery aliquot and store at -20°C or -80°C. Avoid repeated freeze / thaw cycles.
バッファー	Preservative: None PBS, pH 7.2
精製度	Protein G purified
ポリ/モノ	モノクローナル
アイソタイプ	IgG1
軽鎖の種類	kappa

アプリケーション

Our [Abpromise guarantee](#) covers the use of **ab55070** in the following tested applications.

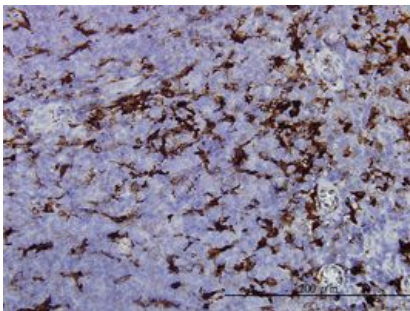
The application notes include recommended starting dilutions; optimal dilutions/concentrations should be determined by the end user.

アプリケーション	Abreviews	特記事項
WB		Use a concentration of 1 - 5 µg/ml. Predicted molecular weight: 86 kDa.
IHC-P		Use a concentration of 1 µg/ml.
ICC/IF		Use a concentration of 1 µg/ml.

ターゲット情報

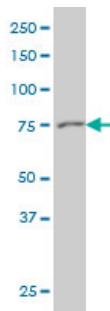
機能	Calcium-regulated, actin-modulating protein that binds to the plus (or barbed) ends of actin monomers or filaments, preventing monomer exchange (end-blocking or capping). It can promote the assembly of monomers into filaments (nucleation) as well as sever filaments already formed. Plays a role in ciliogenesis.
組織特異性	Phagocytic cells, platelets, fibroblasts, nonmuscle cells, smooth and skeletal muscle cells.
関連疾患	Defects in GSN are the cause of amyloidosis type 5 (AMYL5) [MIM:105120]; also known as familial amyloidosis Finnish type. AMYL5 is a hereditary generalized amyloidosis due to gelsolin amyloid deposition. It is typically characterized by cranial neuropathy and lattice corneal dystrophy. Most patients have modest involvement of internal organs, but severe systemic disease can develop in some individuals causing peripheral polyneuropathy, amyloid cardiomyopathy, and nephrotic syndrome leading to renal failure.
配列類似性	Belongs to the villin/gelsolin family. Contains 6 gelsolin-like repeats.
翻訳後修飾	Phosphorylation on Tyr-86, Tyr-409, Tyr-465, Tyr-603 and Tyr-651 in vitro is induced in presence of phospholipids.
細胞内局在	Cytoplasm > cytoskeleton and Secreted.

画像



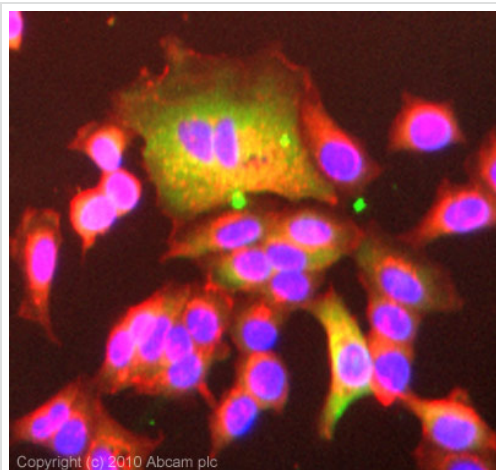
Gelsolin antibody (ab55070) used in immunohistochemistry at 1 ug/ml on formalin fixed and paraffin embedded human adrenal gland.

Immunohistochemistry (Formalin/PFA-fixed paraffin-embedded sections) - Anti-Gelsolin antibody (ab55070)



Western blot - Anti-Gelsolin antibody (ab55070)

Gelsolin antibody (ab55070) at 1ug/lane +
HeLa cell lysate at 25ug/lane.



Immunocytochemistry/ Immunofluorescence - Anti-Gelsolin antibody (ab55070)

ICC/IF image of ab55070 stained MCF7 cells.

The cells were 100% methanol fixed (5 min) and then incubated in 1%BSA / 10% normal goat serum / 0.3M glycine in 0.1% PBS-Tween for 1h to permeabilise the cells and block non-specific protein-protein interactions. The cells were then incubated with the antibody (ab55070, 1µg/ml) overnight at +4°C. The secondary antibody (green) was Alexa Fluor® 488 goat anti-mouse IgG (H+L) used at a 1/1000 dilution for 1h. Alexa Fluor® 594 WGA was used to label plasma membranes (red) at a 1/200 dilution for 1h. DAPI was used to stain the cell nuclei (blue) at a concentration of 1.43µM.

Please note: All products are "FOR RESEARCH USE ONLY AND ARE NOT INTENDED FOR DIAGNOSTIC OR THERAPEUTIC USE"

Our Abpromise to you: Quality guaranteed and expert technical support

- Replacement or refund for products not performing as stated on the datasheet
- Valid for 12 months from date of delivery
- Response to your inquiry within 24 hours
- We provide support in Chinese, English, French, German, Japanese and Spanish
- Extensive multi-media technical resources to help you
- We investigate all quality concerns to ensure our products perform to the highest standards

If the product does not perform as described on this datasheet, we will offer a refund or replacement. For full details of the Abpromise, please visit <https://www.abcam.co.jp/abpromise> or contact our technical team.

Terms and conditions

- Guarantee only valid for products bought direct from Abcam or one of our authorized distributors