


Product datasheet

Anti-Cyclin G2 antibody ab5502

1 Abreviews 1 References 画像数 1

製品の概要

製品名	Anti-Cyclin G2 antibody
製品の詳細	Rabbit polyclonal to Cyclin G2
由来種	Rabbit
アプリケーション	適用あり: IHC-Fr, WB
種交差性	交差種: Human 交差が予測される動物種: Cow 
免疫原	Synthetic peptide corresponding to a region between amino acids 25-36 (LEQEERFQPREK) of Human Cyclin G2. Run BLAST with Run BLAST with

製品の特性

製品の状態	Liquid
保存方法	Shipped at 4°C. Upon delivery aliquot and store at -20°C or -80°C. Avoid repeated freeze / thaw cycles.
バッファー	Preservative: 0.09% Sodium azide Constituents: 2% Sucrose, PBS
精製度	Protein G purified
ポリモノ	ポリクローナル
アイソタイプ	IgG

アプリケーション

Our [Abpromise guarantee](#) covers the use of **ab5502** in the following tested applications.

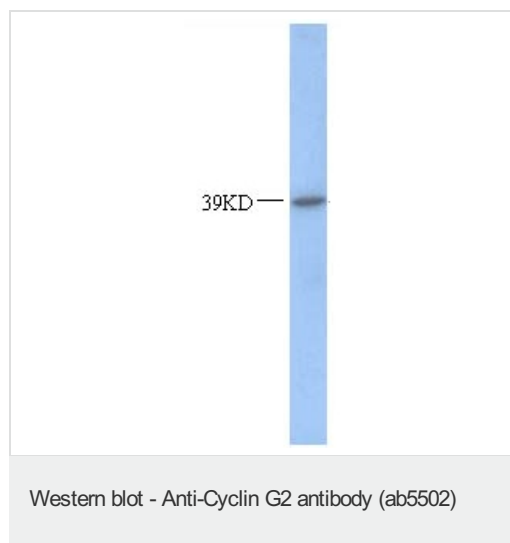
The application notes include recommended starting dilutions; optimal dilutions/concentrations should be determined by the end user.

アプリ ケーション	Abreviews	特記事項
IHC-Fr		Use at an assay dependent concentration. PubMed: 21423799
WB		Use a concentration of 1 µg/ml. Detects a band of approximately 39 kDa (predicted molecular weight: 39 kDa). Good results were obtained when blocked with 5% non-fat dry milk in 0.05% PBS-T.

ターゲット情報

機能	May play a role in growth regulation and in negative regulation of cell cycle progression.
組織特異性	High levels in cerebellum, thymus, spleen and prostate. Low levels in skeletal muscle.
配列類似性	Belongs to the cyclin family. Cyclin G subfamily.
発生段階	Expression levels increase through the cell cycle to peak in the mid/late-S phase and decrease during G2/M phase.
細胞内局在	Cytoplasm.

画像



ab5502 at a 1/1000 dilution staining approximately 39 kDa Cyclin G2 in mouse muscle extract by Western blot (ECL). ab5502 at a 1/1000 dilution staining approximately 39 kDa Cyclin G2 in mouse muscle extract by Western blot (ECL).

Please note: All products are "FOR RESEARCH USE ONLY AND ARE NOT INTENDED FOR DIAGNOSTIC OR THERAPEUTIC USE"

Our Abpromise to you: Quality guaranteed and expert technical support

- Replacement or refund for products not performing as stated on the datasheet
- Valid for 12 months from date of delivery
- Response to your inquiry within 24 hours
- We provide support in Chinese, English, French, German, Japanese and Spanish
- Extensive multi-media technical resources to help you
- We investigate all quality concerns to ensure our products perform to the highest standards

If the product does not perform as described on this datasheet, we will offer a refund or replacement. For full details of the Abpromise, please visit <https://www.abcam.co.jp/abpromise> or contact our technical team.

Terms and conditions

- Guarantee only valid for products bought direct from Abcam or one of our authorized distributors