


## Product datasheet

# Anti-ATP synthase C antibody ab54880

### 画像数 1

#### 製品の概要

製品名	Anti-ATP synthase C antibody
製品の詳細	Mouse monoclonal to ATP synthase C
由来種	Mouse
アプリケーション	適用あり: WB
種交差性	交差種: Recombinant fragment 交差が予測される動物種: Human 
免疫原	Recombinant full length protein, corresponding to amino acids 18-137 of Human ATP synthase C (gene ATP5G1, UniProt P05496)

#### 製品の特性

製品の状態	Liquid
保存方法	Shipped at 4°C. Upon delivery aliquot and store at -20°C or -80°C. Avoid repeated freeze / thaw cycles.
バッファー	Preservative: None PBS, pH 7.2
精製度	Protein G purified
ポリ/モノ	モノクローナル
アイソタイプ	IgG1
軽鎖の種類	kappa

#### アプリケーション

Our [Abpromise guarantee](#) covers the use of **ab54880** in the following tested applications.

The application notes include recommended starting dilutions; optimal dilutions/concentrations should be determined by the end user.

アプリケーション	Abreviews	特記事項
----------	-----------	------

アプリケーション	Abreviews	特記事項
----------	-----------	------

WB Use a concentration of 1 - 5 µg/ml.  
 This antibody has only been tested in WB against the recombinant fragment used as immunogen. We have no data on the detection of endogenous protein.

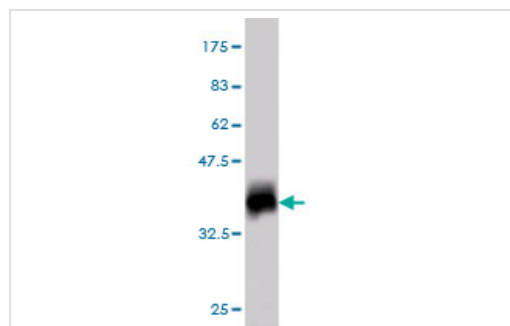
## ターゲット情報

**機能** Mitochondrial membrane ATP synthase (F(1)F(0) ATP synthase or Complex V) produces ATP from ADP in the presence of a proton gradient across the membrane which is generated by electron transport complexes of the respiratory chain. F-type ATPases consist of two structural domains, F(1) - containing the extramembraneous catalytic core and F(0) - containing the membrane proton channel, linked together by a central stalk and a peripheral stalk. During catalysis, ATP synthesis in the catalytic domain of F(1) is coupled via a rotary mechanism of the central stalk subunits to proton translocation. Part of the complex F(0) domain. A homomeric c-ring of probably 10 subunits is part of the complex rotary element.

**配列類似性** Belongs to the ATPase C chain family.

**細胞内局在** Mitochondrion membrane.

## 画像



Western blot - ATP synthase C mature antibody (ab54880)

Western blot against tagged recombinant protein immunogen using ab54880 ATP synthase C antibody at 1ug/ml. Predicted band size of immunogen is 39 kDa.

This antibody has only been tested in WB against the recombinant fragment used as immunogen. We have no data on the detection of endogenous protein.

**Please note:** All products are "FOR RESEARCH USE ONLY AND ARE NOT INTENDED FOR DIAGNOSTIC OR THERAPEUTIC USE"

## Our Abpromise to you: Quality guaranteed and expert technical support

- Replacement or refund for products not performing as stated on the datasheet
- Valid for 12 months from date of delivery
- Response to your inquiry within 24 hours
- We provide support in Chinese, English, French, German, Japanese and Spanish
- Extensive multi-media technical resources to help you

- We investigate all quality concerns to ensure our products perform to the highest standards

If the product does not perform as described on this datasheet, we will offer a refund or replacement. For full details of the Abpromise, please visit <https://www.abcam.co.jp/abpromise> or contact our technical team.

### **Terms and conditions**

---

- Guarantee only valid for products bought direct from Abcam or one of our authorized distributors