


## Product datasheet

# Anti-Kv3.2 antibody ab53158

### 画像数 2

#### 製品の概要

製品名	Anti-Kv3.2 antibody
製品の詳細	Rabbit polyclonal to Kv3.2
由来種	Rabbit
特異性	Detects endogenous levels of total Potassium Channel Kv3.2b protein.
アプリケーション	<b>適用あり:</b> ELISA, WB, IHC-P
種交差性	<b>交差種:</b> Human <b>交差が予測される動物種:</b> Rat 
免疫原	Synthetic peptide (Human)
ポジティブ・コントロール	Human brain tissue, extracts from HepG2 cells.

#### 製品の特性

製品の状態	Liquid
保存方法	Shipped at 4°C. Upon delivery aliquot and store at -20°C. Avoid freeze / thaw cycles.
バッファー	Preservative: 0.02% Sodium Azide Constituents: 50% Glycerol, PBS (without Mg <sup>2+</sup> and Ca <sup>2+</sup> ), 150mM Sodium chloride, pH 7.4
精製度	Immunogen affinity purified
ポリ/モノ	ポリクローナル
アイソタイプ	IgG

#### アプリケーション

Our [Abpromise guarantee](#) covers the use of **ab53158** in the following tested applications.

The application notes include recommended starting dilutions; optimal dilutions/concentrations should be determined by the end user.

アプリケーション	Abreviews	特記事項
ELISA		1/10000.
WB		1/500 - 1/1000. Detects a band of approximately 70 kDa (predicted molecular weight: 70 kDa).

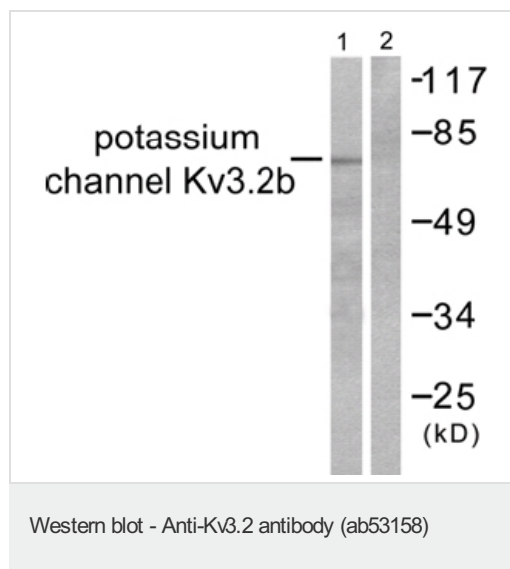
アプリケーション	Abreviews	特記事項
IHC-P		Use at an assay dependent concentration.

## ターゲット情報

**関連性** Potassium channels contribute to maintaining cell volume, membrane potential, neuronal excitability and the secretion of transmitters, salt and hormones. Two families of potassium channels have been identified. One family includes the inwardly rectifying potassium channels whereas, the other family includes: voltage sensing (KV); big conductance, calcium activated (BKca); and small conductance, calcium activated (SK) potassium channels. Kv3.2 functions as a delayed rectifier type K<sup>+</sup> channel activated by large membrane depolarizations.

**細胞内局在** Cell Membrane

## 画像



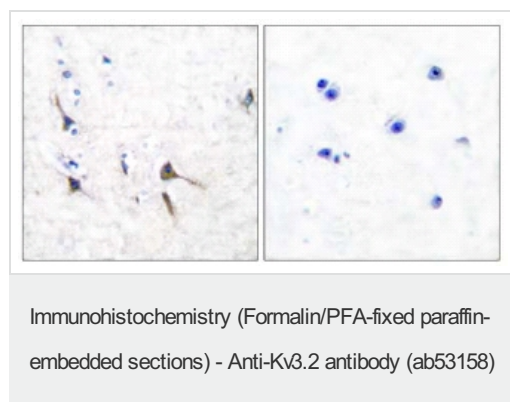
**All lanes :** Anti-Kv3.2 antibody (ab53158) at 1/500 dilution

**Lane 1 :** Extracts from HepG2 cells, untreated.

**Lane 2 :** Extracts from HepG2 cells, treated with the immunizing peptide.

**Predicted band size:** 70 kDa

**Observed band size:** 70 kDa



This image shows human brain tissue stained with ab53158 at 1/50 dilution. Left hand image; untreated tissue: Right hand image; tissue treated with the immunising peptide.

**Please note:** All products are "FOR RESEARCH USE ONLY AND ARE NOT INTENDED FOR DIAGNOSTIC OR THERAPEUTIC USE"

**Our Abpromise to you: Quality guaranteed and expert technical support**

- Replacement or refund for products not performing as stated on the datasheet
- Valid for 12 months from date of delivery
- Response to your inquiry within 24 hours
  
- We provide support in Chinese, English, French, German, Japanese and Spanish
- Extensive multi-media technical resources to help you
- We investigate all quality concerns to ensure our products perform to the highest standards

If the product does not perform as described on this datasheet, we will offer a refund or replacement. For full details of the Abpromise, please visit <https://www.abcam.co.jp/abpromise> or contact our technical team.

## **Terms and conditions**

---

- Guarantee only valid for products bought direct from Abcam or one of our authorized distributors