

Product datasheet

Anti-GFAP antibody ab50738

2 References 画像数 2

製品の概要

製品名	Anti-GFAP antibody
製品の詳細	Chicken polyclonal to GFAP
由来種	Chicken
アプリケーション	<b>適用あり:</b> WB, ICC/IF, IHC-P
種交差性	<b>交差種:</b> Mouse, Human
免疫原	Recombinant GFAP Protein (Human)
ポジティブ・コントロール	e18 mouse brain This antibody gave a positive result in IHC in the following FFPE tissue: Human Hippocampus. This antibody gave a positive result when used in the following formaldehyde fixed cell lines: SKNSH

製品の特性

製品の状態	Liquid
保存方法	Shipped at 4°C. Store at +4°C short term (1-2 weeks). Store at -20°C or -80°C. Avoid freeze / thaw cycle.
バッファー	Preservative: 0.02% Sodium Azide Constituents: Whole serum, PBS 5nM, pH 7.2
精製度	Immunogen affinity purified
ポリ/モノ	ポリクローナル
アイソタイプ	IgY

アプリケーション

Our [Abpromise guarantee](#) covers the use of **ab50738** in the following tested applications.

The application notes include recommended starting dilutions; optimal dilutions/concentrations should be determined by the end user.

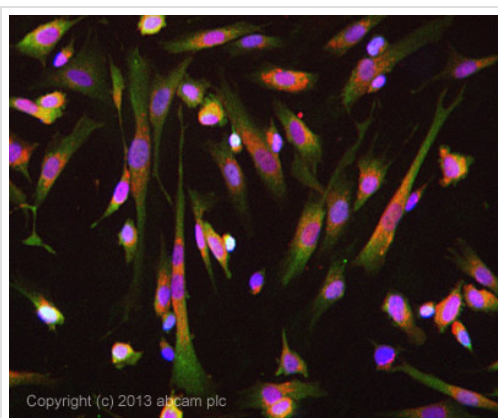
アプリケーション	Abreviews	特記事項
WB		1/500. Predicted molecular weight: 50 kDa.

アプリケーション	Abreviews	特記事項
ICC/IF		1/100 - 1/200.
IHC-P		Use a concentration of 5 µg/ml. Perform heat mediated antigen retrieval with citrate buffer pH 6 before commencing with IHC staining protocol.

## ターゲット情報

機能	GFAP, a class-III intermediate filament, is a cell-specific marker that, during the development of the central nervous system, distinguishes astrocytes from other glial cells.
組織特異性	Expressed in cells lacking fibronectin.
関連疾患	Defects in GFAP are a cause of Alexander disease (ALEXD) [MIM:203450]. Alexander disease is a rare disorder of the central nervous system. It is a progressive leukoencephalopathy whose hallmark is the widespread accumulation of Rosenthal fibers which are cytoplasmic inclusions in astrocytes. The most common form affects infants and young children, and is characterized by progressive failure of central myelination, usually leading to death usually within the first decade. Infants with Alexander disease develop a leukoencephalopathy with macrocephaly, seizures, and psychomotor retardation. Patients with juvenile or adult forms typically experience ataxia, bulbar signs and spasticity, and a more slowly progressive course.
配列類似性	Belongs to the intermediate filament family.
翻訳後修飾	Phosphorylated by PKN1.
細胞内局在	Cytoplasm. Associated with intermediate filaments.

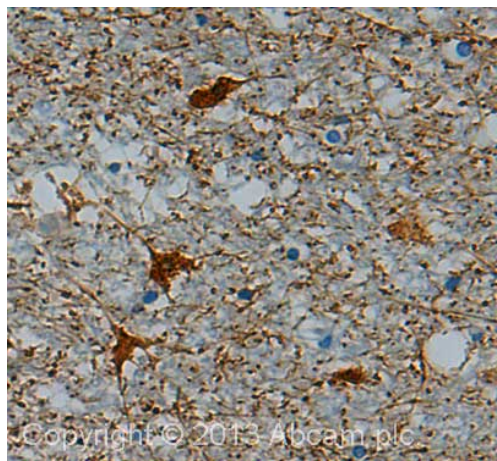
## 画像



Copyright (c) 2013 abcam plc

Immunocytochemistry/ Immunofluorescence - Anti-GFAP antibody (ab50738)

ICC/IF image of ab50738 stained SKNSH cells. The cells were 4% formaldehyde fixed (10 min) and then incubated in 1%BSA / 10% normal goat serum / 0.3M glycine in 0.1% PBS-Tween for 1h to permeabilise the cells and block non-specific protein-protein interactions. The cells were then incubated with the antibody ab50738 at 1/100 dilution overnight at +4°C. The secondary antibody (green) was DyLight® 488 goat anti- chicken (ab96947) IgY (H+L) used at a 1/250 dilution for 1h. Alexa Fluor® 594 WGA was used to label plasma membranes (red) at a 1/200 dilution for 1h. DAPI was used to stain the cell nuclei (blue) at a concentration of 1.43µM.



Immunohistochemistry (Formalin/PFA-fixed paraffin-embedded sections) - Anti-GFAP antibody (ab50738)

IHC image of GFAP staining in Human Hippocampus formalin-fixed paraffin-embedded tissue section, performed on a Leica Bond™ system using the standard protocol F. The section was pre-treated using heat mediated antigen retrieval with sodium citrate buffer (pH6, epitope retrieval solution 1) for 20 mins. The section was then incubated with ab50738, 5 µg/ml, for 15 mins at room temperature and detected using an HRP conjugated compact polymer system. DAB was used as the chromogen. The section was then counterstained with haematoxylin and mounted with DPX.

For other IHC staining systems (automated and non-automated) customers should optimize variable parameters such as antigen retrieval conditions, primary antibody concentration and antibody incubation times.

**Please note:** All products are "FOR RESEARCH USE ONLY AND ARE NOT INTENDED FOR DIAGNOSTIC OR THERAPEUTIC USE"

### Our Abpromise to you: Quality guaranteed and expert technical support

- Replacement or refund for products not performing as stated on the datasheet
- Valid for 12 months from date of delivery
- Response to your inquiry within 24 hours
- We provide support in Chinese, English, French, German, Japanese and Spanish
- Extensive multi-media technical resources to help you
- We investigate all quality concerns to ensure our products perform to the highest standards

If the product does not perform as described on this datasheet, we will offer a refund or replacement. For full details of the Abpromise, please visit <https://www.abcam.co.jp/abpromise> or contact our technical team.

### Terms and conditions

- Guarantee only valid for products bought direct from Abcam or one of our authorized distributors